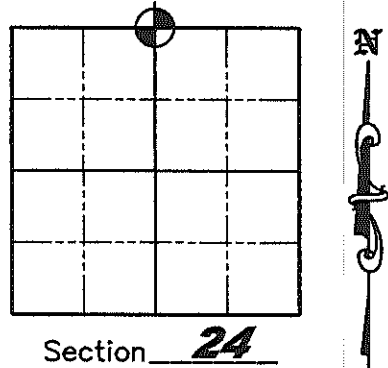


U.S. PUBLIC LAND SURVEY MONUMENT RECORD

NOTE: This form is intended and designed to fulfill all requirements of Wisconsin Administrative Code, Chapter A-E 7.08 U.S. Public Land Survey Monument Record (3)(a)(b)(c)(d)(e)(f)(g)(h)(i). An additional sheet may be added if necessary to conform with said requirements.

(a) Corner location: Township 35 North
 Range 5 East
 Town of Wilson
 County of Lincoln
 Lincoln County N 241957.356
 Coordinates E 370901.825



(b)(f)(g)(h) Description of monument found at this corner and if it was accepted, state all evidence (material, testimonial, occupation, plats, records, other monuments) used as a basis for accepting. If not accepted or if nothing was found, state evidence used as a basis for establishing location. If reestablished through lost corner proportionate methods, indicate all monuments, distances and directions used to establish. Indicate type of monument found or set and sign post.

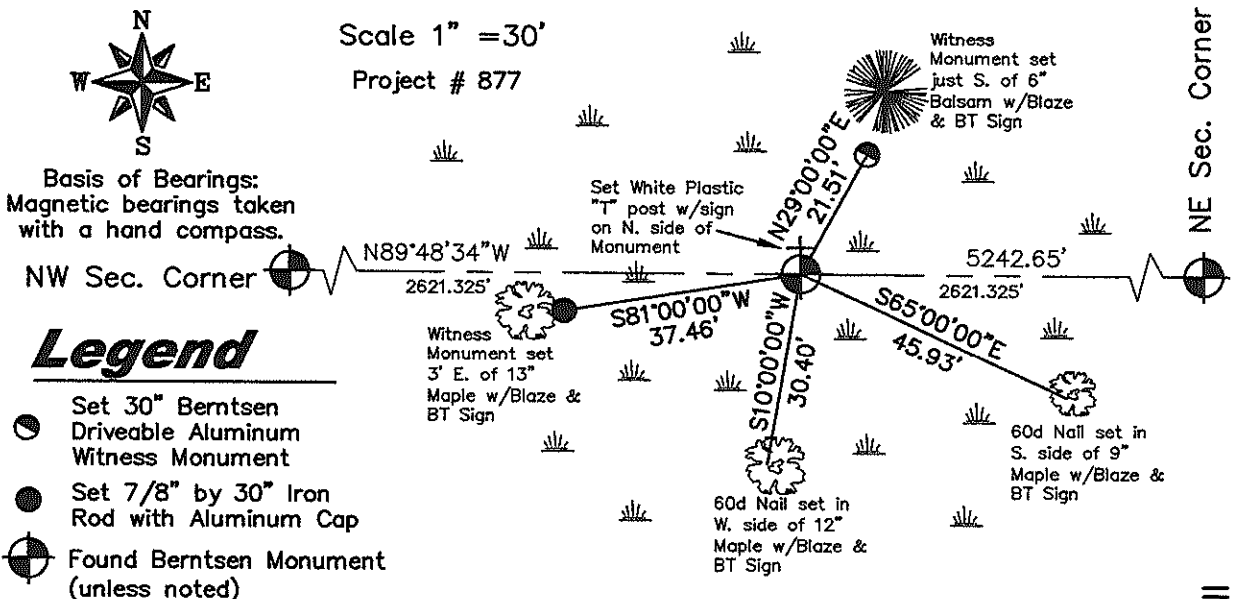
September 26, 1862 - Joseph H. Jenkins set wood 1/4 Section post with bearing tree - Tamarack 10° S65°W, 29 links, no other trees near.

1949 - Owens-Illinois "Transit & Chain Survey using corners & fence lines found" of Section 24 (per drawing dated 12/30/86 by W.H. Stuth) does not show anything at corner.

1965 - Owens-Illinois "Transit & Chain Survey using corners found" of Section 13 (per drawing dated 12/30/86 by W.H. Stuth) does not show anything at corner.

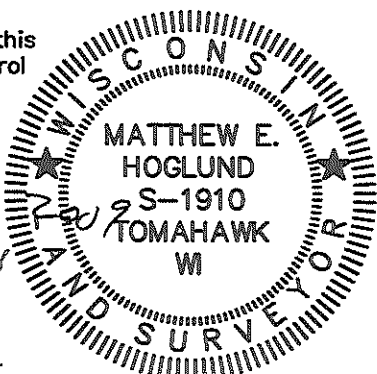
June-July, 2009 - Matthew E. Hoglund took static post-processed GPS measurements to establish Lincoln County Coordinates on a coordinate pair near corner. Did extensive search for evidence of corner, including searching: S65°W, 29 links from all apparent rotten stump remains in the area, at the single proportion location between the NE and NW Section Corners, using the magnetic locator - dug up numerous magnetic rocks located below the swamp moss, looked at the position established by doubling over from the Northwest Section Corner through the found fence corner approximately 1/4 mile East, and at a prod of the South 1/4 Corner position through the found fence post location near the Center of Section. No physical evidence of the corner was found and measurement data East-West along the Section line inferred on the 1965 Owens-Illinois "survey" of Section 13 was 86.73 feet off in the Section Line length, so it appears a bust in the measurements of their survey was made so that re-establishment by any "obliterated means" could not be substantiated. Set new Berntsen Monument 0.4' above swamp surface at single proportion position between the NE and NW Section Corners and set new witnesses as shown below.

(c)(d)(e) Plan view of corner with ties to at least 4 witness monuments. If in disagreement with previously established corner, show the distances between the two corners and also indicate the ties to the disputed corner.



(i) I, Matthew E. Hoglund, certify that the corner location on this record was determined by me under my direction and control and that this U.S. Public Land Survey Monument is correct and complete to the best of my knowledge and belief.

Matthew E. Hoglund Sept. 22
 Signature



RECEIVED BY LINCOLN COUNTY SURVEYOR THIS 22ND DAY OF September 20 09
Tom Dell
 COUNTY SURVEYOR