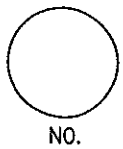


# LINCOLN COUNTY U.S. PUBLIC LAND SURVEY MONUMENT LOCATION RECORD

CORNER NUMBER \_\_\_\_\_  
 SECTION 15  
 TOWNSHIP 35 NORTH  
 RANGE 5 EAST



LANDMARK  BENCHMARK \_\_\_\_\_ FOUND   
 CORNER IDENTITY: NORTH 1/4 CORNER BERTSEN MON. SET   
 RESET   
 RE-TIED

LINCOLN COUNTY COORDINATE: N: 248346.34  
 E: 351756.11

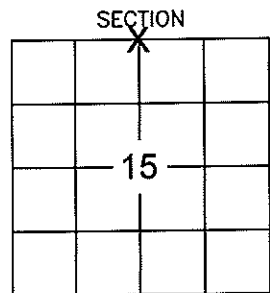
ELEVATION-(FEET): \_\_\_\_\_ DATUM: \_\_\_\_\_

WEATHER: MOSTLY CLOUDY

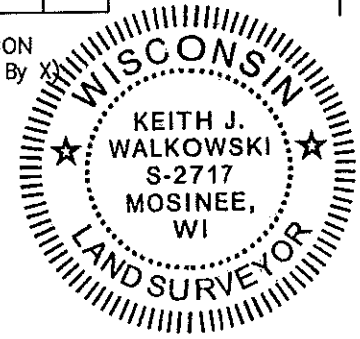
DATE OF SURVEY: DEC. 11TH, 2008 TEMPERATURE: 15 °F

SURVEY PARTY: K.J.W. / N.J.W.

WILSON  
 CITY, VILLAGE, TOWN



LOCATION (Indicated By X)



## BASIS FOR MONUMENT LOCATION: (DESCRIBE METHOD OF SURVEY AND CORNER AUTHENTICATION)

SEARCHED FOR THE NORTH 1/4 CORNER USING FRANCIS FOX'S NOTES. FOUND A 4" POINTED WOOD POST SUB SURFACE NEXT TO A WOOD GUARD POST WITH A METAL PLAQUE. WE WERE UNABLE TO FIND A STONE AND FOX'S NOTES CALLS FOR ORIGINAL 1/4 POST. THE POST FIT THE DISTANCE CALLED FOR ON THE NOTES TO THE ADJOINING CORNERS. ACCEPTED WOOD POST AS THE NORTH 1/4 CORNER AND REPLACED WITH A BERTSEN MONUMENT AND PERPETUATED CORNER LOCATION AS SHOWN BELOW.

CERTIFIED CORRECT:  
Keith J. Walkowski  
 KEITH J. WALKOWSKI  
 Registered Land Surveyor  
 DATE: 12-29-08

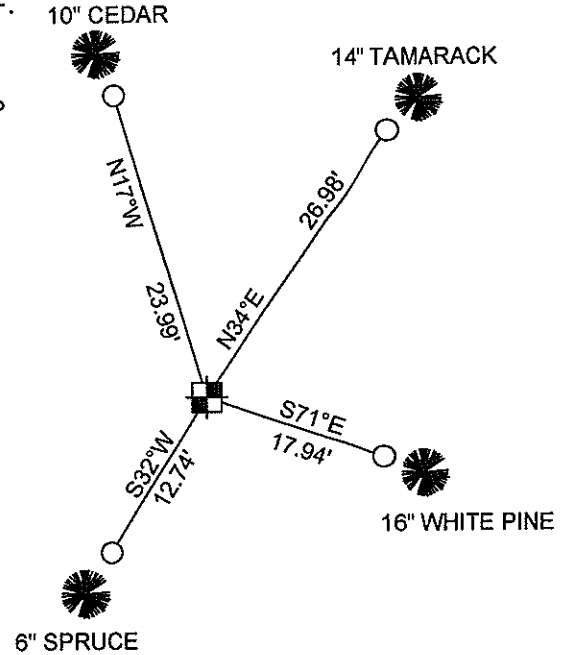
FIELD BOOK NO. 19 PAGE NO. 30  
 COMPANY RIVERSIDE LAND SURVEYING LLC

## TIE SKETCH: SHOW MINIMUM OF FOUR (4) HORIZONTAL TIE DISTANCES TO FIXED WITNESS MONUMENTS. DESCRIBE ALL MONUMENTS FOUND OR SET. CORRECT ALL DISTANCES SHOWN TO STANDARD TEMPERATURE OF 68° F.

- SET BERTSEN MONUMENT
- SET 3/4" x 30" REBAR WITH ALUMINUM CAP

NOTE  
 - ALL BEARINGS ARE FROM A HAND HELD MAGNETIC COMPASS

- THIS DRAWING IS NOT TO SCALE



RECEIVED BY LINCOLN COUNTY SURVEYOR THIS 30<sup>TH</sup> DAY OF December 20 08  
Tony Dahl  
 COUNTY SURVEYOR