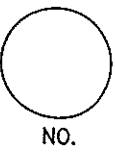


LINCOLN COUNTY U.S. PUBLIC LAND SURVEY MONUMENT LOCATION RECORD

CORNER NUMBER _____
 SECTION 15
 TOWNSHIP 35 NORTH
 RANGE 5 EAST



LANDMARK BENCHMARK _____
 FOUND SET
 CORNER IDENTITY: NORTHEAST CORNER STONE MONUMENT RE-TIED RESET

LINCOLN COUNTY COORDINATE: N: 248358.06
 E: 354380.05

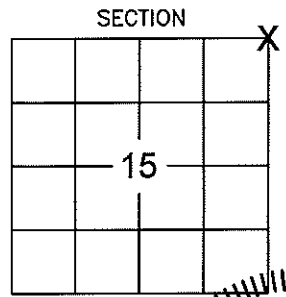
ELEVATION--(FEET): _____ DATUM: _____

WEATHER: MOSTLY CLOUDY

DATE OF SURVEY: DEC. 8TH, 2008 TEMPERATURE: 15 °F

SURVEY PARTY: K.J.W. / K.R.F.

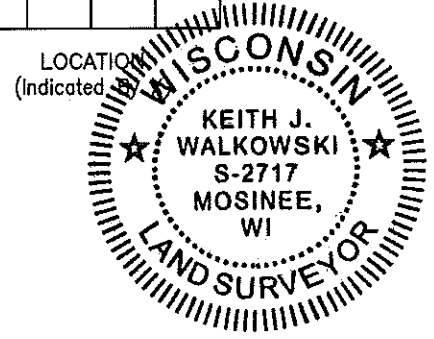
WILSON
 CITY, VILLAGE, TOWN



BASIS FOR MONUMENT LOCATION:

(DESCRIBE METHOD OF SURVEY AND CORNER AUTHENTICATION)

SEARCHED FOR THE NORTHEAST CORNER USING FRANCIS FOX'S NOTES. FOUND A 6"x6" GRANITE STONE WITH A CROSS ON TOP PERTRUDING 0.5' ABOVE GRADE IN A PILE OF ROCKS WITH AN OLD WOOD GUARD POST. ACCEPTED THE STONE MONUMENT AS THE CORNER AND PERPETUATED CORNER LOCATION AS SHOWN BELOW.



CERTIFIED CORRECT:
Keith J. Walkowski
 KEITH J. WALKOWSKI
 Registered Land Surveyor
 DATE: 12-29-08

FIELD BOOK NO. 19 PAGE NO. 30
 COMPANY RIVERSIDE LAND SURVEYING LLC

TIE SKETCH:

SHOW MINIMUM OF FOUR (4) HORIZONTAL TIE DISTANCES TO FIXED WITNESS MONUMENTS. DESCRIBE ALL MONUMENTS FOUND OR SET. CORRECT ALL DISTANCES SHOWN TO STANDARD TEMPERATURE OF 68° F.

- 6"x6" GRANITE STONE
- SET 3/4" x 30" REBAR WITH ALUMINUM CAP

NOTE
 - ALL BEARINGS ARE FROM A HAND HELD MAGNETIC COMPASS

- THIS DRAWING IS NOT TO SCALE

RECEIVED BY LINCOLN COUNTY SURVEYOR THIS 30TH DAY OF December 20 08
Tomy Dalko
 COUNTY SURVEYOR

