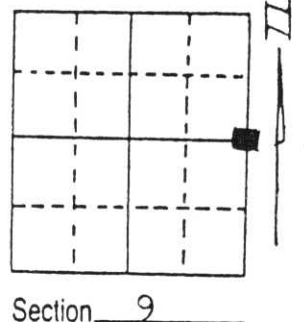


# U.S. PUBLIC LAND SURVEY MONUMENT RECORD

Note: This form is intended and designed to fulfill all requirements of Wisconsin Administrative Code, Chapter A-E 5.02, U.S. Public Land Survey Monument Record (3) (a) (b) (c) (d) (e) (f) (g) (h) (i). An additional sheet may be added if necessary to conform with said requirements.

(a) Corner location: Township 35 North  
 Range 5 East  
 Town/City/Village Wilson  
 County Lincoln



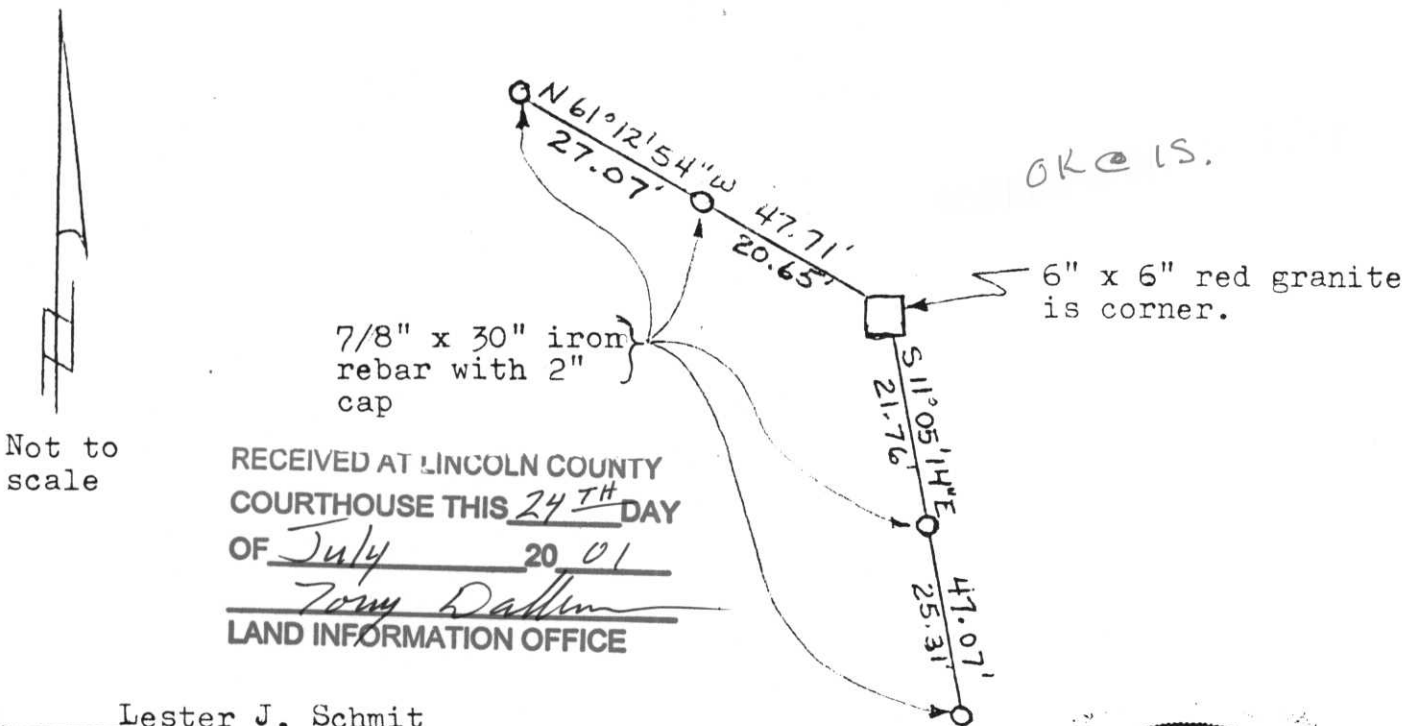
Section 9

(b) (f) (g) (h) Description of monument found at this corner and if it was accepted, state all evidence (material, testimonial, occupational, plats, records, other monuments) used as a basis for accepting. If not accepted or if nothing was found, state evidence used as basis for establishing location. If reestablished through lost corner proportionate methods, indicate all monuments, distances and directions used to establish. Original Gov't. Survey: October 1862 by Joseph H. Jenkins, set wood post for corner with bearings, yellow pine 9 S 10° E 49 links & no other trees of sufficient size near. I found a 6" x 6" red granite monument set by Francis F. Fox during his survey work in the Town of Wilson on Lincoln County owned lands. I set a 3/4" iron pipe on the north side of the granite for location purposes only. A 5" squared wood post is 1.0' to the Southwest. A carsonite post is 1.0' to the Northeast. I set witnesses as shown below.

FD

**RECEIVED AT LINCOLN COUNTY  
 COURTHOUSE THIS 4th DAY  
 OF Oct 1995  
*Pat Priebe*  
**TAX DESCRIPTION OFFICE****

(c) (d) (e) Plan view of corner with ties to at least 4 witness monuments. If in disagreement with previously established corner, show the distances between the two corners and also indicate the ties to the disputed corner.



Not to scale

**RECEIVED AT LINCOLN COUNTY  
 COURTHOUSE THIS 24th DAY  
 OF July 2001  
*Tony Dabbin*  
**LAND INFORMATION OFFICE****

i) I, Lester J. Schmit  
 (type or print name) certify that the corner location on this record was determined by me or under my direction and control and that this U.S. Public Land Survey Monument Record is correct and complete to the best of my knowledge and belief.  
Lester J. Schmit                      4 Oct 95  
 signature                                      Date



Index No. G-13

# U.S. PUBLIC LAND SURVEY MONUMENT RECORD

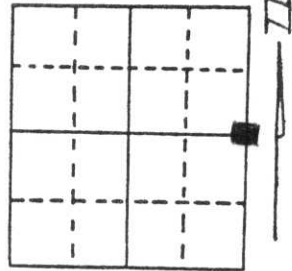
Note: This form is intended and designed to fulfill all requirements of Wisconsin Administrative Code, Chapter A-E 5.02, U.S. Public Land Survey Monument Record (3) (a) (b) (c) (d) (e) (f) (g) (h) (i). An additional sheet may be added if necessary to conform with said requirements.

(a) Corner location: Township 35 North

Range 5 East

Town/City/Village Wilson

County Lincoln

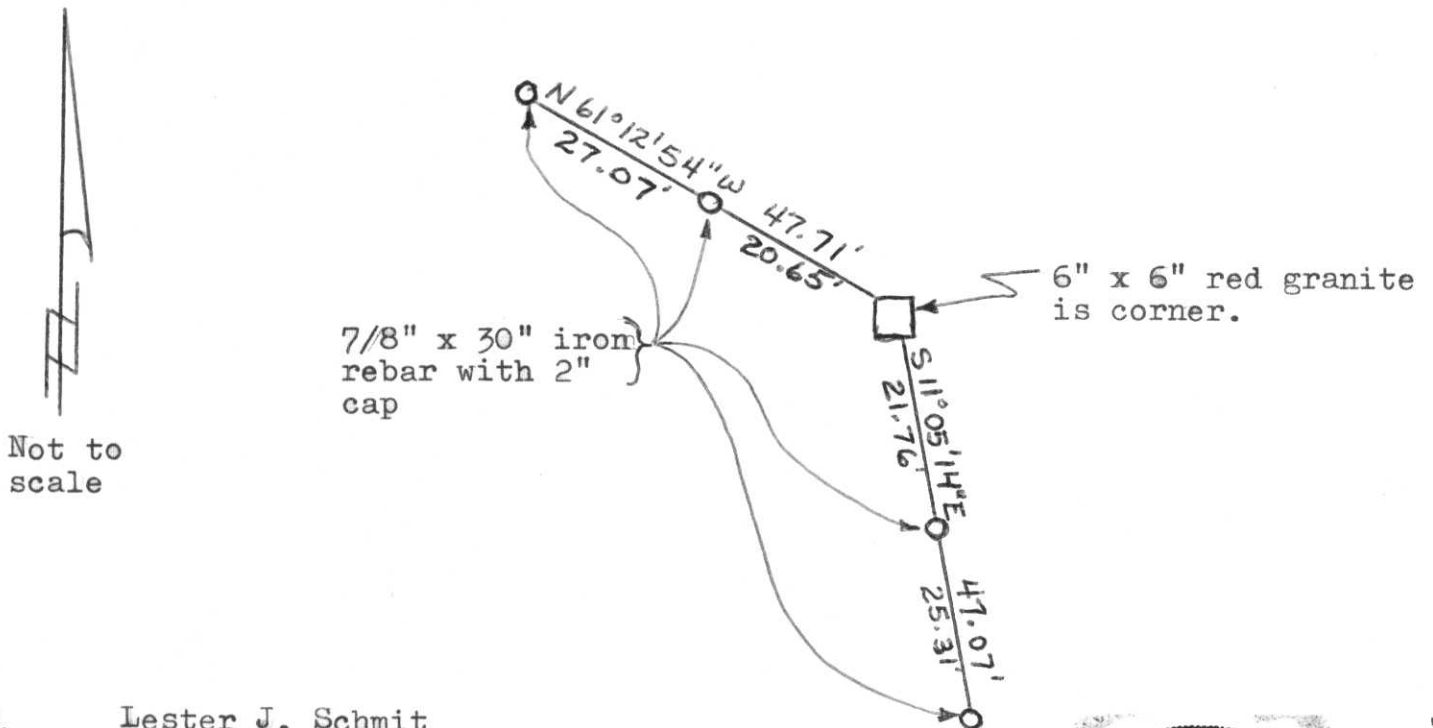


Section 9

(b) (f) (g) (h) Description of monument found at this corner and if it was accepted, state all evidence (material, testimonial, occupational, plats, records, other monuments) used as a basis for accepting. If not accepted or if nothing was found, state evidence used as basis for establishing location. If reestablished through lost corner proportionate methods, indicate all monuments, distances and directions used to establish. Original Gov't. Survey: October 1862 by Joseph H. Jenkins, set wood post for corner with bearings, yellow pine 9 S 10° E 49 links & no other trees of sufficient size near. I found a 6" x 6" red granite monument set by Francis F. Fox during his survey work in the Town of Wilson on Lincoln County owned lands. I set a 3/4" iron pipe on the north side of the granite for location purposes only. A 5" squared wood post is 1.0' to the Southwest. A carsonite post is 1.0' to the Northeast. I set witnesses as shown below.

**RECEIVED AT LINCOLN COUNTY  
COURTHOUSE THIS 4th DAY  
OF Oct 19 95  
*Pat Priske*  
TAX DESCRIPTION OFFICE**

(c) (d) (e) Plan view of corner with ties to at least 4 witness monuments. If in disagreement with previously established corner, show the distances between the two corners and also indicate the ties to the disputed corner.



(i) I, Lester J. Schmit  
(type or print name) certify that the corner location on this record was determined by me or under my direction and control and that this U.S. Public Land Survey Monument Record is correct and complete to the best of my knowledge and belief.

*Lester J. Schmit*                      4 Oct 95  
Signature                                              Date



Index No. 9-13