

# U.S. PUBLIC LAND SURVEY MONUMENT RECORD

NOTE: THIS FORM IS INTENDED AND DESIGNED TO FULFILL ALL REQUIREMENTS OF WISCONSIN ADMINISTRATIVE CODE, CHAPTER A-E 7.08, U.S. PUBLIC LAND SURVEY MONUMENT RECORD (3)(a)(b)(c)(d)(e)(f)(g)(h)(i). ADDITIONAL SHEETS MAY BE NECESSARY TO CONFORM TO SAID REQUIREMENTS.

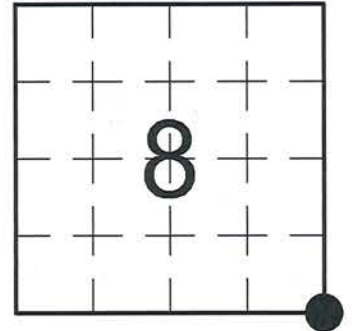
T 35 N, R 5 E

**(a) CORNER LOCATION:**

SOUTHEAST CORNER, SECTION 8  
 TOWNSHIP 35 NORTH  
 RANGE 5 EAST  
 TOWN OF WILSON  
 LINCOLN COUNTY  
 WISCONSIN

**(b) HISTORY OF ORIGINAL CORNER:**

ORIGINAL SURVEYOR: Joseph H. Jenkins, Set post  
 COMMENCING DATE: September 25, 1862  
 COMPLETION DATE: October  
 ORIGINAL BEARING TREES:  
 24" Yellow Pine; N 1° W; 16 links  
 24" Yellow Pine; S 70° W; 7 links  
 15" White Pine; N 45° E; 61 links  
 10" Birch; S 84° E; 25 links



**(f)(g)(h) DESCRIPTION OF MONUMENT FOUND AT THIS CORNER AND IF IT WAS ACCEPTED. STATE ALL EVIDENCE (MATERIAL, TESTIMONIAL, OCCUPATIONAL, PLATS, RECORDS, OTHER MONUMENTS) USED AS A BASIS FOR ESTABLISHING LOCATION. IF RE-ESTABLISHING THROUGH LOST CORNER PROPORTIONATE METHODS, INDICATE ALL MONUMENTS, DISTANCES, AND DIRECTIONS USED TO ESTABLISH. INDICATE TYPE OF MONUMENTS FOUND OR SET.**

04/10/1979 - J. Kasson, RLS-1416, found a 6" x 6" Granite Monument at the corner location, shown on Lincoln County Surveyor's Office Map No. L247B.

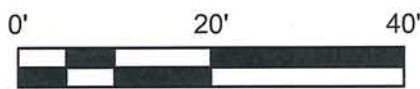
09/04/1979 & 10/19/1979 - L. Schmit, PLS-1192, found a 6" x 6" Granite Monument at the corner location, shown on Lincoln County Surveyor's Office Map No. M109A & M109B.

11/23/1981 - L. Schmit, PLS-1192, found a 6" x 6" Granite Monument at the corner location, shown on Lincoln County Surveyor's Office Map No. M166A.

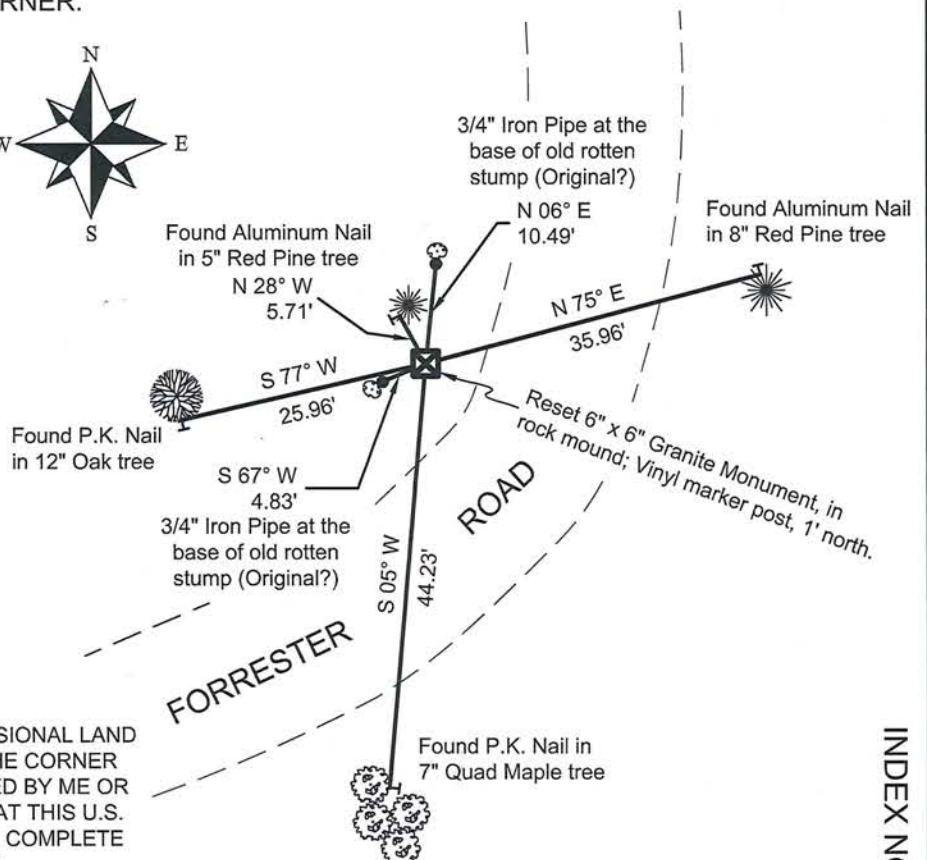
01/23/2003 - S. Foltz, RLS-1170, found and accepted a 6" x 6" Granite Monument with a chiseled "x", mounded in rock. He found a 3/4" iron pipe at the base of two possible original BT stumps and made new BTs to perpetuate the corner location.

10/16/2014 - I, Anthony R. Dallman, PLS-2405, found the 6" x 6" Granite Monument of record tipped in a rock mound and the top portion broken off. I inverted the bottom 20" of the Granite Monument and reset it plumb in the same rock mound. I remeasured the existing reference ties as shown in the sketch below.

**(c)(d)(e) PLAN VIEW OF THE CORNER WITH TIES TO AT LEAST FOUR WITNESSES. IF IN DISAGREEMENT WITH PREVIOUSLY ESTABLISHED CORNER, SHOW THE DISTANCES BETWEEN THE TWO CORNERS AND ALSO THE TIES TO THE DISPUTED CORNER.**



- Bearings by hand-held compass.  
 - Distances by steel tape.



I, ANTHONY R. DALLMAN, WISCONSIN PROFESSIONAL LAND SURVEYOR, S-2405, HEREBY CERTIFY THAT THE CORNER LOCATION ON THIS RECORD WAS REFERENCED BY ME OR UNDER MY DIRECTION AND CONTROL AND THAT THIS U.S. PUBLIC LAND SURVEY MONUMENT RECORD IS COMPLETE TO THE BEST OF MY KNOWLEDGE AND BELIEF.

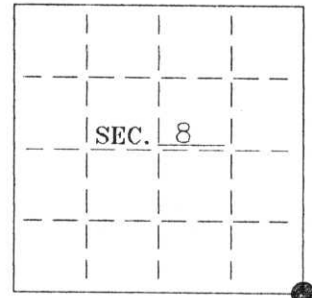
*Anthony R. Dallman* 7/3/15  
 ANTHONY R. DALLMAN, PLS S-2405

INDEX NO. 1-9

# U. S. PUBLIC LAND SURVEY MONUMENT RECORD

Note: This form is intended and designed to fulfill all requirements of Wisconsin Administrative Code-Chapter A-E 7.08 U. S. Public Land Survey Monument Record (3)(a)(b)(c)(d)(e)(f)(g)(h)(i). An additional sheet may be added if necessary to conform with said requirements.

(a) CORNER LOCATION: State Plane Coordinates  
SE corner of Sec. 8 X ---  
 Township 35 North Y ---  
 Range 5 East Datum Base ---  
 Town Wilson County of Lincoln



(b) HISTORY OF ORIGINAL CORNER ESTABLISHMENT:

Original Surveyor: Alfred Millard  
 Date of Survey: Commenced 1860  
 Completed 1860

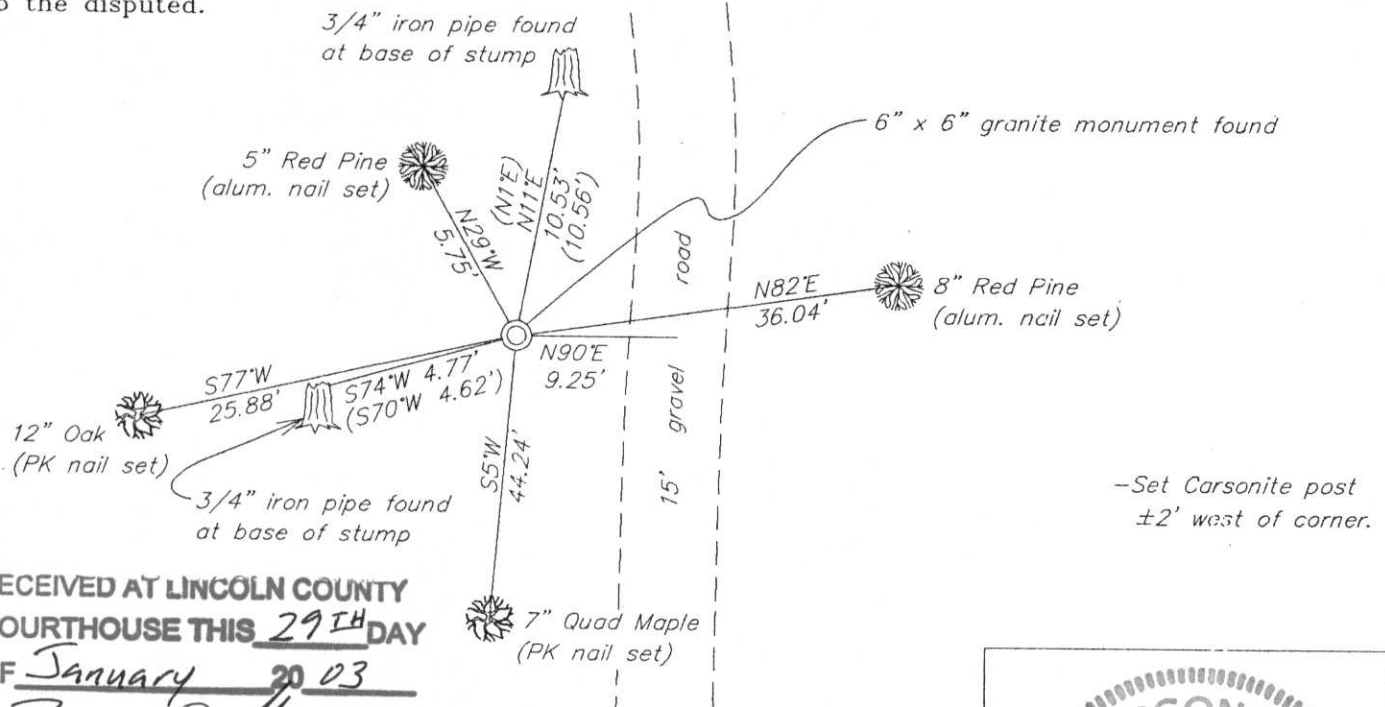
Original B.T.'S

24" Y. Pine N1°W, 16 lks (10.56')  
 24" Y. Pine S70°W, 7 lks (4.62')

(b)(f)(g)(h) Description of monument found at this corner and if it was accepted—state all evidence (material—testimonial—occupation—plats—records—other monuments) used as a basis for accepting. If not accepted or if nothing was found state evidence used as basis for establishing location. If reestablished through lost corner proportionate methods indicate all monuments—distances and directions used to establish. Indicate type of monument and sign post found or set.

- 1979— A map by Lester Schmit shows he found a 6" x 6" granite monument.
- 1979— A map by James Kasson shows he found a 6" x 6" granite monument.
- 1981— A map by Lester Schmit shows he found a 6" x 6" granite monument.
- 2001— I found and accepted a 6" x 6" granite monument with a chiseled "x", mounded in rock. I found a 3/4" iron pipe at the base of two possible original BT stumps. I made 4 new BT's as shown below.

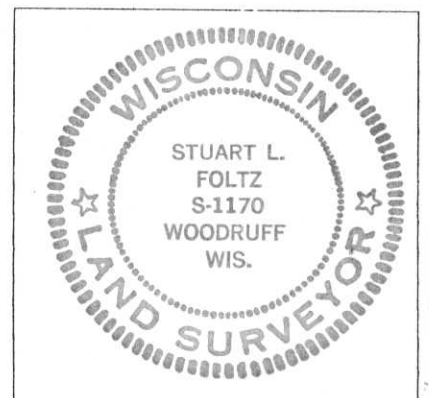
(c)(d)(e) Plan view of corner with ties to at least 4 witness monuments. If in disagreement with previously established corner—show the distances between the two corners and also indicate the ties to the disputed.



RECEIVED AT LINCOLN COUNTY  
 COURTHOUSE THIS 29<sup>TH</sup> DAY  
 OF January 20 03  
Tommy Dalk  
 LAND INFORMATION OFFICE

(i) I Stuart L. Foltz S-1170  
 hereby certify that the corner location on this record was determined by me or under my direction and control and that this U.S. Public Land Survey Monument Record is correct and complete to the best of my knowledge and belief.

Stuart L. Foltz Signature Date 1/23/03  
 Foltz and Associates, Inc.



INDEX NO. I-9