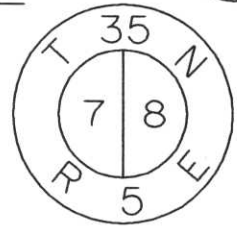


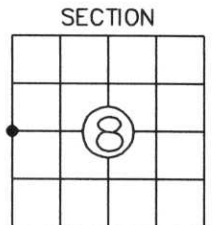
# LINCOLN COUNTY U.S. PUBLIC LAND SURVEY MONUMENT LOCATION RECORD

INDEX NO.

LANDMARK       BENCHMARK \_\_\_\_\_  
 FOUND   
 CORNER IDENTITY: 6"x6" RED GRANITE MONUMENT      SET   
 RE-SET   
 COORDINATE SYSTEM: \_\_\_\_\_      RE-TIED   
 ZONE: \_\_\_\_\_ ADJUSTMENT: \_\_\_\_\_  
 GRID: \_\_\_\_\_ GROUND: \_\_\_\_\_  
 COMBINATION FACTOR: \_\_\_\_\_  
 ELEVATION-(FEET): \_\_\_\_\_ (DATUM): \_\_\_\_\_  
 DATE OF SURVEY: MAY 16, 1999  
 SURVEY PARTY: TONY JONES - MATT HOGLUND



WILSON  
CITY, VILLAGE, TOWN



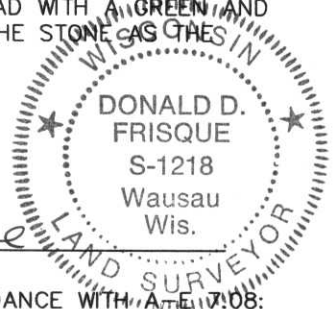
SECTION  
LOCATION INDICATED BY ●

## BASIS FOR MONUMENT LOCATION:

(DESCRIBE METHOD OF SURVEY AND CORNER AUTHENTICATION)

ORIGINAL GOV'T SURVEY: OCTOBER 1862 BY JOSEPH H. JENKINS, SET WOOD POST FOR CORNER WITH BEARINGS, HEMLOCK 10", N87dW, 72 LINKS, BIRCH 12', N42dE, 21 LINKS

MAY 1999 BHA FOUND A 6"x6" GRANITE MONUMENT IN THE CENTERLINE OF HONEY ROAD WITH A GREEN AND WHITE WITNESS POST WITH METAL PLACARD 25' WEST OF THE MONUMENT, ACCEPTED THE STONE AS THE CORNER AND SET WITNESS TIES AS SHOWN BELOW.

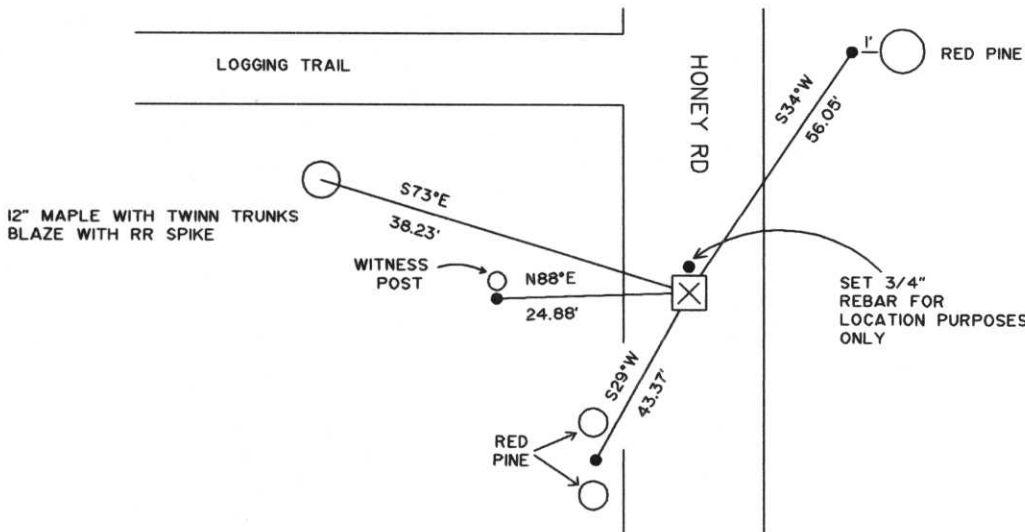


FIELD BOOK NO. \_\_\_\_\_ PAGE NO. \_\_\_\_\_  
 BHA PROJECT NO: 99033

BY: Donald D. Frisque  
 DON D. FRISQUE, S1218  
 DATE: 7/27/01 CERTIFIED IN ACCORDANCE WITH A.T.E. 11-108:  
 BECHER-HOPPE ASSOCIATES, INC.

## TIE SKETCH:

SHOW MINIMUM OF FOUR (4) HORIZONTAL TIE DISTANCES TO FIXED WITNESS MONUMENTS. DESCRIBE ALL MONUMENTS FOUND OR SET. CORRECT ALL DISTANCES SHOWN AS STANDARD TEMPERATURE OF 68° F.



LEGEND

- FOUND 6"x6" GRANITE MONUMENT W/CHISELED "X"
- SET 3/4" REBAR W/CAP

RECEIVED AT LINCOLN COUNTY  
 COURTHOUSE THIS 24<sup>TH</sup> DAY  
 OF July 20 01  
Tony Dallen  
 LAND INFORMATION OFFICE

9-5