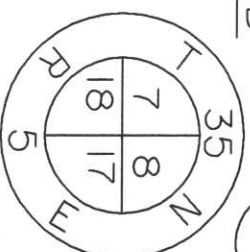


LINCOLN COUNTY U.S. PUBLIC LAND  
SURVEY MONUMENT LOCATION RECORD

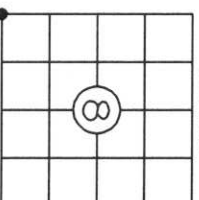
INDEX NO.



WILSON

CITY, VILLAGE, TOWN

SECTION



LANDMARK  BENCHMARK \_\_\_\_\_ FOUND   
 CORNER IDENTITY: 6"x6" RED GRANITE MONUMENT SET   
 COORDINATE SYSTEM: \_\_\_\_\_ RE-SET   
 ZONE: \_\_\_\_\_ ADJUSTMENT: \_\_\_\_\_ RE-TIED   
 GRID: \_\_\_\_\_ GROUND: \_\_\_\_\_  
 COMBINATION FACTOR: \_\_\_\_\_  
 ELEVATION-(FEET): \_\_\_\_\_ (DATUM): \_\_\_\_\_  
 DATE OF SURVEY: JUNE 6, 1999  
 SURVEY PARTY: SCOTT RIDDERBUSCH - MARK MATRISH

**BASIS FOR MONUMENT LOCATION:**

(DESCRIBE METHOD OF SURVEY AND CORNER AUTHENTICATION)  
 ORIGINAL GOV'T. SURVEY: OCTOBER 1862 BY JOSEPH H. JENKINS, SET WOOD POST FOR CORNER WITH BEARINGS, WHITE PINE 20", N87°W, 220 LINKS, WHITE PINE 10", N8°E, 121 LINKS, HEMLOCK 20", S11°E, 48 LINKS, HEMLOCK 10", S22°W, 96 LINKS.

JUNE 1999 BHA FOUND A 6"x6" GRANITE MONUMENT IN THE CENTERLINE OF HONEY ROAD WITH A 1" IRON PIPE ALONGSIDE THE STONE, FOUND A WITNESS POST 30' WEST OF MONUMENT AND ACCEPTED THE STONE AS THE CORNER. SET WITNESS TIES TO THE CORNER AS SHOWN BELOW.

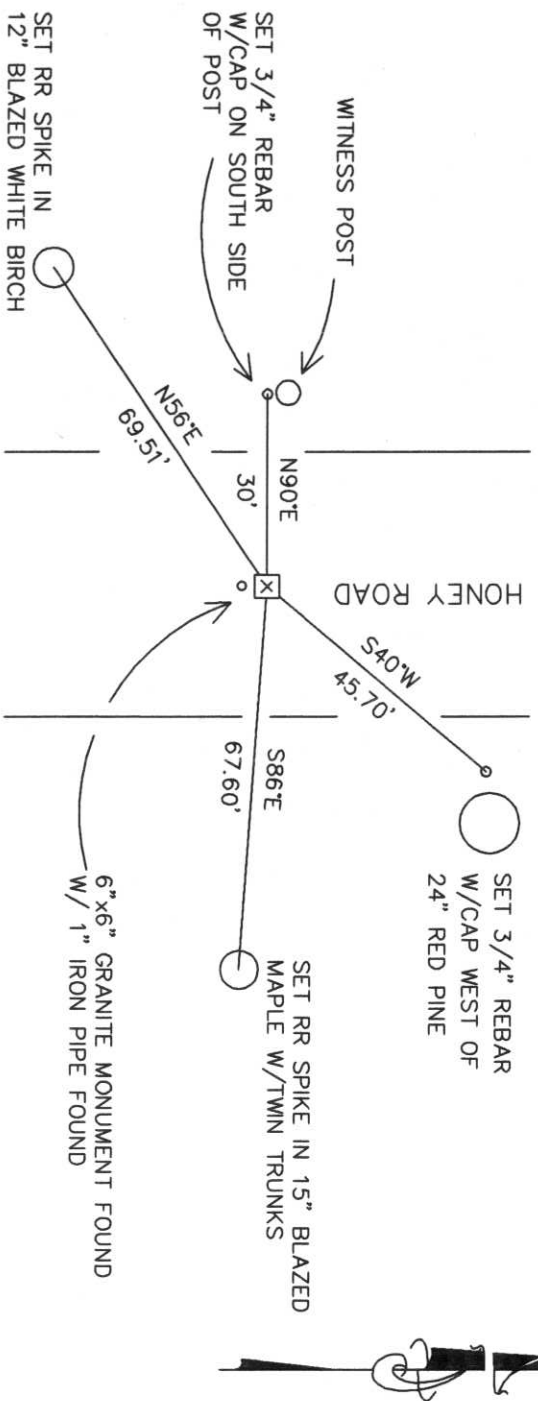
FIELD BOOK NO. \_\_\_\_\_ PAGE NO. \_\_\_\_\_  
 BHA PROJECT NO: 99033

BY: Don Frisque DONALD D. FRISQUE 6-1218  
 DATE: 7/23/01 CERTIFIED IN ACCORDANCE WITH A-EVT-508:  
 BECHER-HOPPE ASSOCIATES, INC. Wausau



**TIE SKETCH:**

SHOW MINIMUM OF FOUR (4) HORIZONTAL TIE DISTANCES TO FIXED WITNESS MONUMENTS. DESCRIBE ALL MONUMENTS FOUND OR SET. CORRECT ALL DISTANCES SHOWN AS STANDARD TEMPERATURE OF 68° F.



RECEIVED AT LINCOLN COUNTY  
 COURTHOUSE THIS 24<sup>TH</sup> DAY  
 OF July 20 01  
Tommy Dabbs  
 LAND INFORMATION OFFICE

1-5