

# U.S. PUBLIC LAND SURVEY MONUMENT RECORD

NOTE: This form is intended and designed to fulfill all requirements of Wisconsin Administrative Code, Chapter A-E 7 .08 U.S. Public Land Survey Monument Record (3)(a)(b)(c)(d)(e)(f)(g)(h)(i). An additional sheet may be added if necessary to conform with said requirements.

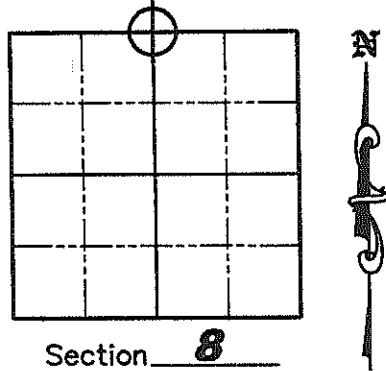
(a) Corner location: Township 35 North

Range 5 East

Town of Wilson

County of Lincoln

Lincoln County N 253547.744  
Coordinates E 341145.796



(b)(f)(g)(h) Description of monument found at this corner and if it was accepted, state all evidence (material, testimonial, occupation, plats, records, other monuments) used as a basis for accepting. If not accepted or if nothing was found, state evidence used as a basis for establishing location. If reestablished through lost corner proportionate methods, indicate all monuments, distances and directions used to establish. Indicate type of monument found or set and sign post.

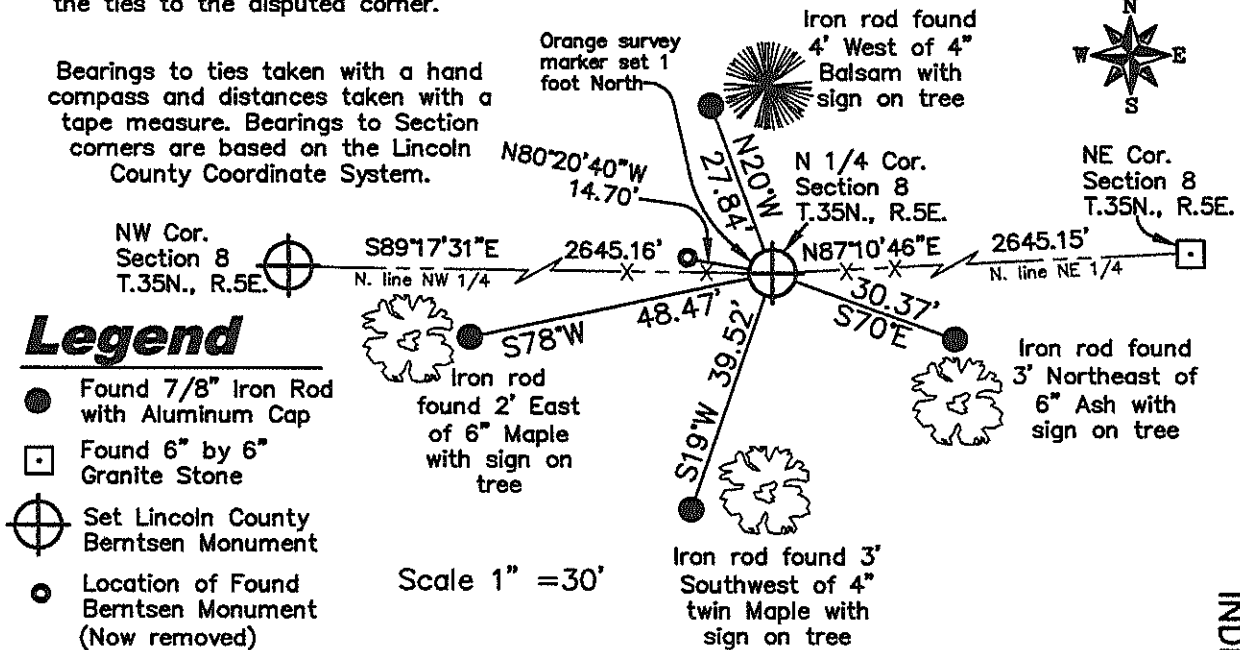
September/October 1862 – Joseph H. Jenkins set 1/4 Section post with bearing trees: Hemlock 14° N18°E, 22 links, Hemlock 5° S42°E, 22 links.

March 2000 – Donald D. Frisque with Becher–Hoppe Associates, Inc. conducted a search and found no available evidence for the corner. They held a straight line proportion East–West and held an existing fence line North–South. They also set 4 witness corners.

November 2007–October 2008 – Matthew E. Hogleund found the Lincoln County Bernsten Monument set by Donald Frisque, but it was staked in the wrong position and the Northwest Corner of Section 8, that was used to determine this corner, also was in error. (NOTE: See the U.S. Public Land Survey Monument Record for the Northwest Corner of Section 8 for more details as this corner was revised) I reset the corner equidistant from the NW and NE section corners and on the existing E–W fence line for the North–South location. Took new bearings and distances to the existing witness corners as shown below.

(c)(d)(e) Plan view of corner with ties to at least 4 witness monuments. If in disagreement with previously established corner, show the distances between the two corners and also indicate the ties to the disputed corner.

Bearings to ties taken with a hand compass and distances taken with a tape measure. Bearings to Section corners are based on the Lincoln County Coordinate System.



## Legend

- Found 7/8" Iron Rod with Aluminum Cap
- Found 6" by 6" Granite Stone
- ⊕ Set Lincoln County Bernsten Monument
- Location of Found Bernsten Monument (Now removed)

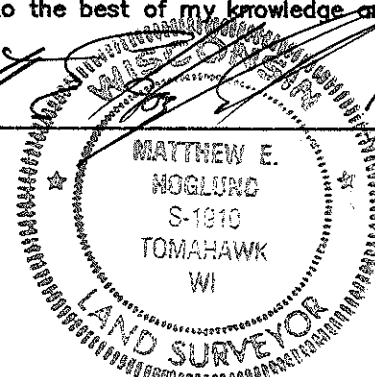
Scale 1" = 30'

(i) I, Matthew E. Hogleund, certify that the corner location on this record was determined by me under my direction and control and that this U.S. Public Land Survey Monument is correct and complete to the best of my knowledge and belief.

RECEIVED BY LINCOLN COUNTY  
SURVEYOR THIS 10<sup>TH</sup> DAY  
OF November 2008  
*Tommy Datta*  
COUNTY SURVEYOR

Signature

Date



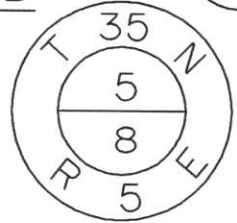
INDEX NO. E-7

# LINCOLN COUNTY U.S. PUBLIC LAND SURVEY MONUMENT LOCATION RECORD

INDEX NO.

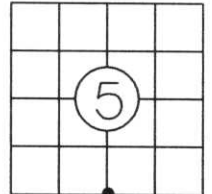
LANDMARK       BENCHMARK \_\_\_\_\_  
 CORNER IDENTITY: BERNSTEN ALUMINUM MONUMENT  
 COORDINATE SYSTEM: LINCOLN  
 ZONE: \_\_\_\_\_ ADJUSTMENT: \_\_\_\_\_  
 GRID: \_\_\_\_\_ GROUND: N 253547.432 E 341142.117  
 COMBINATION FACTOR: BASED FROM WILSON GPS-CONVENTIONAL METHODS  
 ELEVATION-(FEET): \_\_\_\_\_ (DATUM): NAD 83' (1991)  
 DATE OF SURVEY: MARCH 24, 2000  
 SURVEY PARTY: TONY JONES - SCOTT RIDDERBUSCH

FOUND   
 SET   
 RE-SET   
 RE-TIED



WILSON  
 CITY, VILLAGE, TOWN

SECTION



LOCATION  
 INDICATED BY ●

## BASIS FOR MONUMENT LOCATION:

(DESCRIBE METHOD OF SURVEY AND CORNER AUTHENTICATION)

ORIGINAL GOVERNMENT SURVEY: OCTOBER 1862 BY JOSEPH H. JENKINS, SET WOOD POST FOR CORNER WITH BEARINGS, HEMLOCK 14 N18°E, 22 LINKS, HEMLOCK 5 S42°E 22 LINKS.

MARCH 2000 BHA CONDUCTED A SEARCH AND FOUND NO AVAILABLE EVIDENCE FOR THE CORNER, HELD A STRAIGHT LINE PRORATION EAST-WEST, AND HELD THE FENCE NORTH-SOUTH. WITNESSED THE CORNER AS SHOWN BELOW.

FIELD BOOK NO. \_\_\_\_\_ PAGE NO. \_\_\_\_\_  
 BHA PROJECT NO: 1999.033

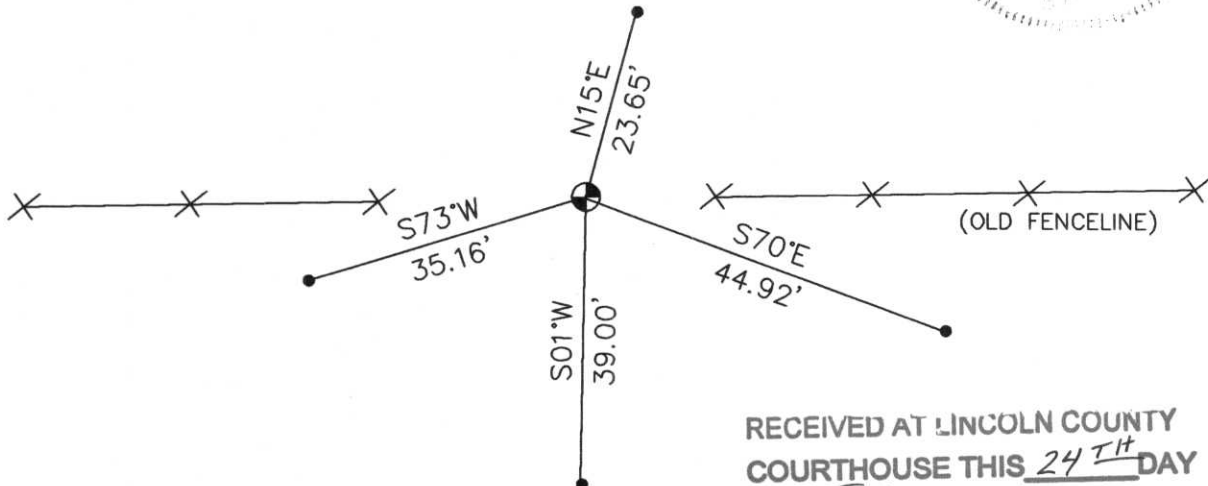
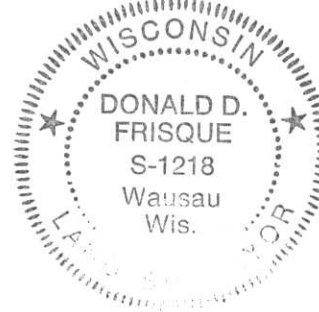
*Donald D. Frisque*  
 BY: DON FRISQUE S-1218  
 DATE: 2/23/01 CERTIFIED IN ACCORDANCE WITH A-E 7.08:  
 BECHER-HOPPE ASSOCIATES, INC.

## TIE SKETCH:

SHOW MINIMUM OF FOUR (4) HORIZONTAL TIE DISTANCES TO FIXED WITNESS MONUMENTS. DESCRIBE ALL MONUMENTS FOUND OR SET. CORRECT ALL DISTANCES SHOWN AS STANDARD TEMPERATURE OF 68° F.

### LEGEND

- ⊕ BERSTEN MONUMENT SET IN PLACE
- 7/8" IRON ROD WITH ALUMINUM CAP SET IN PLACE



RECEIVED AT LINCOLN COUNTY  
 COURTHOUSE THIS 24<sup>TH</sup> DAY  
 OF July 20 01  
*Tony Dalton*  
 LAND INFORMATION OFFICE

L-7