

# U.S. PUBLIC LAND SURVEY MONUMENT RECORD

NOTE: THIS FORM IS INTENDED AND DESIGNED TO FULFILL ALL REQUIREMENTS OF WISCONSIN ADMINISTRATIVE CODE, CHAPTER A-E 7.08, U.S. PUBLIC LAND SURVEY MONUMENT RECORD (3)(a)(b)(c)(d)(e)(f)(g)(h)(i). ADDITIONAL SHEETS MAY BE NECESSARY TO CONFORM TO SAID REQUIREMENTS.

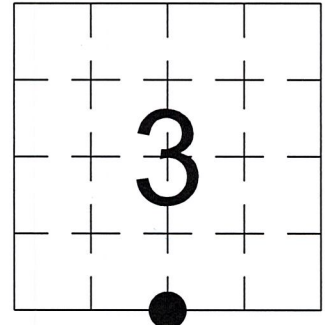
T 35 N, R 5 E

**(a) CORNER LOCATION:**

SOUTH QUARTER CORNER, SECTION 3  
 TOWNSHIP 35 NORTH  
 RANGE 5 EAST  
 TOWN OF WILSON  
 LINCOLN COUNTY  
 WISCONSIN

**(b) HISTORY OF ORIGINAL CORNER:**

ORIGINAL SURVEYOR: Joseph H. Jenkins, Set Post  
 COMMENCING DATE: September 25, 1862  
 COMPLETION DATE: October, 1862  
 ORIGINAL BEARING TREES:  
 8" Spruce; S 53° E; 15 links  
 9" Spruce; S 73° W; 12 links



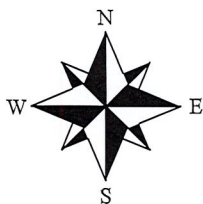
**(f)(g)(h) DESCRIPTION OF MONUMENT FOUND AT THIS CORNER AND IF IT WAS ACCEPTED. STATE ALL EVIDENCE (MATERIAL, TESTIMONIAL, OCCUPATIONAL, PLATS, RECORDS, OTHER MONUMENTS) USED AS A BASIS FOR ESTABLISHING LOCATION. IF RE-ESTABLISHING THROUGH LOST CORNER PROPORTIONATE METHODS, INDICATE ALL MONUMENTS, DISTANCES, AND DIRECTIONS USED TO ESTABLISH. INDICATE TYPE OF MONUMENTS FOUND OR SET.**

1939, Francis Fox set a Stone Monument at "Old Acceptable Corner".

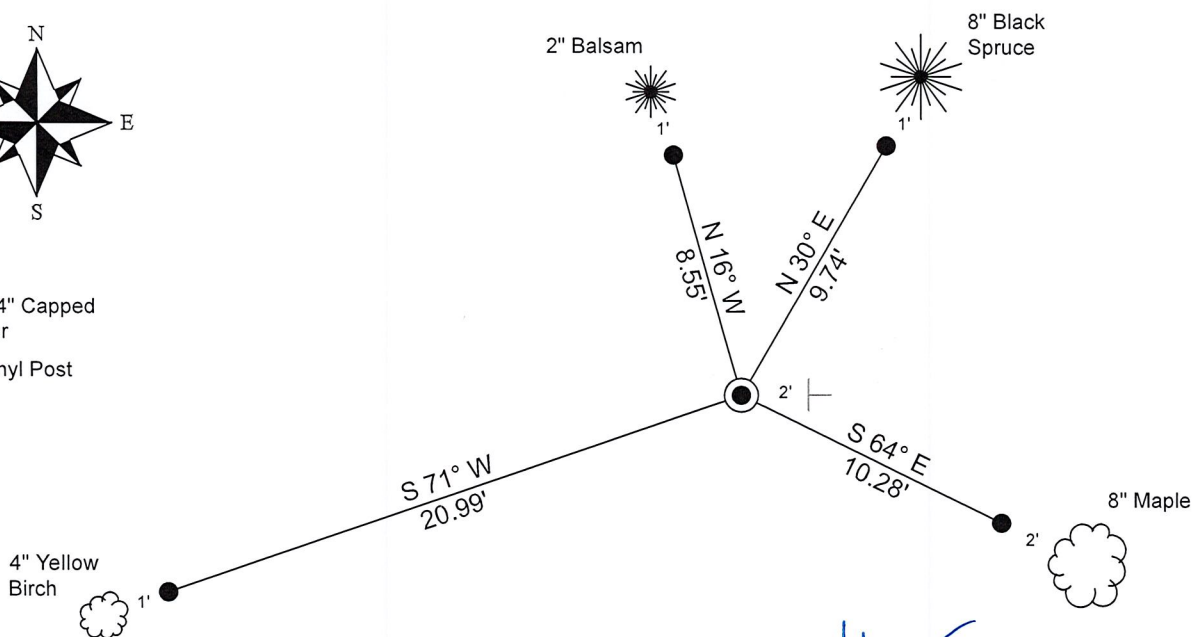
3/07/2023, I, Anthony R. Dallman, PLS-2405, was unable to find Stone Monument and set a 30" Berntsen Swamp Rod at the calculated Fox position. I accepted this location and set witness monuments, as shown in the sketch below, to further perpetuate the corner location.

**(c)(d)(e) PLAN VIEW OF THE CORNER WITH TIES TO AT LEAST FOUR WITNESSES. IF IN DISAGREEMENT WITH PREVIOUSLY ESTABLISHED CORNER, SHOW THE DISTANCES BETWEEN THE TWO CORNERS AND ALSO THE TIES TO THE DISPUTED CORNER.**

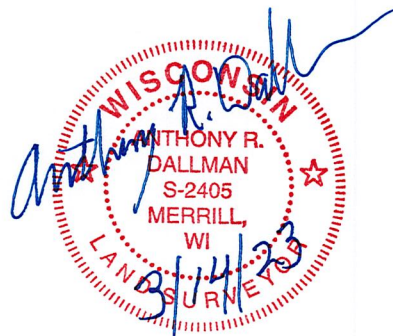
- Tie bearings by hand-held compass.
- Tie distances by steel tape.
- Not to scale.



- - Set 3/4" Capped Rebar
- ⊥ - Set Vinyl Post



I, ANTHONY R. DALLMAN, WISCONSIN PROFESSIONAL LAND SURVEYOR, S-2405, HEREBY CERTIFY THAT THE CORNER LOCATION ON THIS RECORD WAS REFERENCED BY ME OR UNDER MY DIRECTION AND CONTROL AND THAT THIS U.S. PUBLIC LAND SURVEY MONUMENT RECORD IS COMPLETE TO THE BEST OF MY KNOWLEDGE AND BELIEF.



*Anthony R. Dallman* 3/14/23  
 ANTHONY R. DALLMAN, PLS S-2405

INDEX NO. E-15

43505030020

43505030020\_Mon-N





43505030020\_North





43505030020\_West





43505030020\_South





43505030020\_East

