

# U.S. PUBLIC LAND SURVEY MONUMENT RECORD

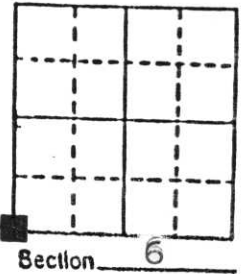
**Note:** This form is intended and designed to fulfill all requirements of Wisconsin Administrative Code, Chapter A-E 5.02, U.S. Public Land Survey Monument Record (3) (a) (b) (c) (d) (e) (f) (g) (h) (i). An additional sheet may be added if necessary to conform with said requirements.

(a) Corner location: Township 35 North

Range 6 East

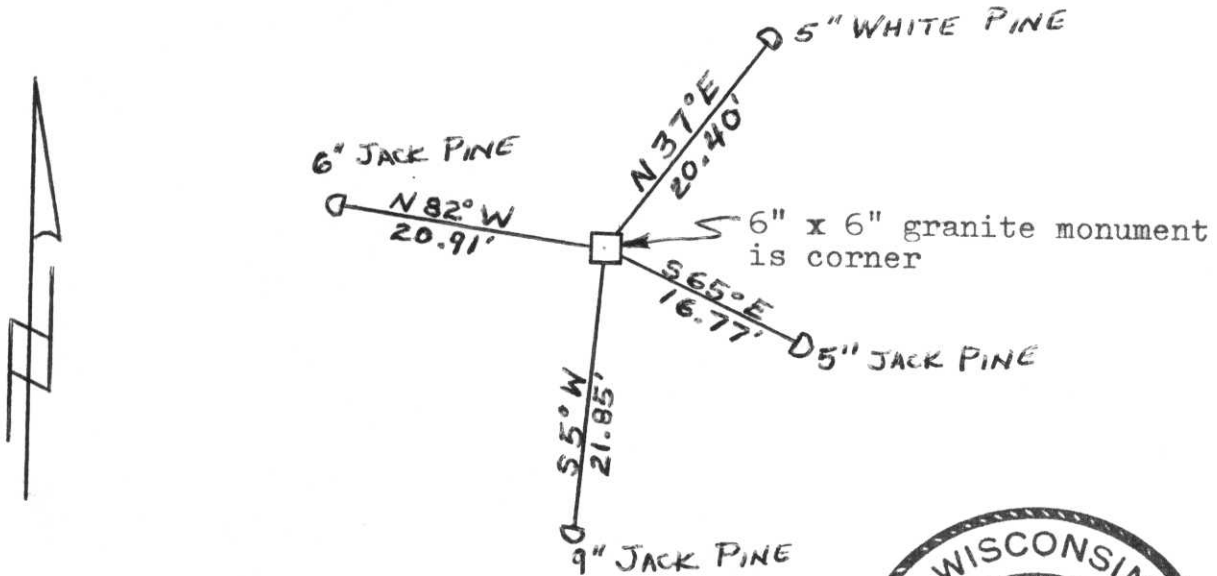
Town Bradley

County Lincoln



b) (f) (g) (h) Description of monument found at this corner and if it was accepted, state all evidence (material, testimonial, occupational, plats, records, other monuments) used as a basis for accepting. If not accepted or if nothing was found, state evidence used as basis for establishing location. If reestablished through lost corner proportionate methods, indicate all monuments, distances and directions used to establish. Original Gov't. Survey: 23 Aug. 1860 by Alfred Millard, set wood post for corner with bearings, spruce 6 N 50° W 5 links, spruce 6 S 45° E 17 links, spruce 6 N 70° E 33 links & spruce 6 S 30° W 4 links. A survey by Francis Fox found an old wood post as acceptable evidence for corner. He replaced the wood post with a 6" x 6" granite monument to mark the corner. He indicated there was nothing to witness. In running south from corner, he noted the center-line of the railroad is 489' from the corner. I found in a small grove of pine, slightly above swamp level. The grove is surrounded by open swamp. The corner stone is near the middle of the grove and is the called distance north of the center-line of the railroad.

c) (d) (e) Plan view of corner with ties to at least 4 witness monuments. If in disagreement with previously established corner, show the distances between the two corners and also indicate the ties to the disputed corner.



(i) I, Lester J. Schmit  
 (Type or print name) certify that the corner location on this record was determined by me or under my direction and control and that this U.S. Public Land Survey Monument Record is correct and complete to the best of my knowledge and belief.



Lester J. Schmit                      9 Apr 90  
 Signature                                      Date

Index No. E-1

RECEIVED AT LINCOLN COUNTY  
 COURTHOUSE THIS 9th DAY  
 OF April 19 90  
Pat Priebe  
 TAX & DESCRIPTION OFFICE