

CERTIFIED LAND CORNER RESTORATION

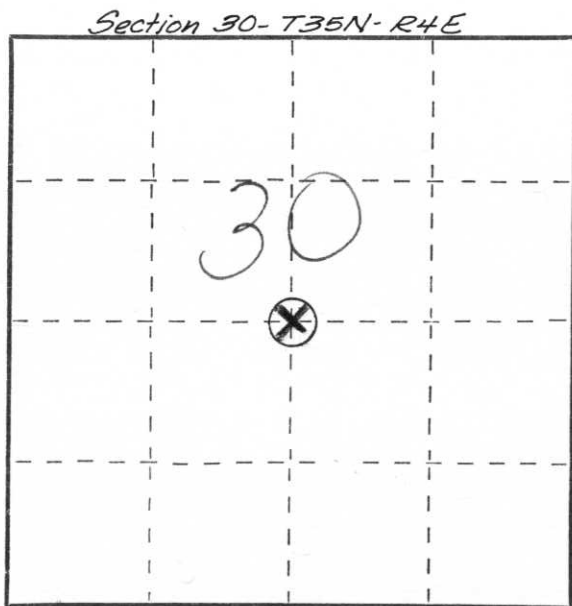
Index No. 5-3

State of Wisconsin }
 County of Portage } ss.

I, Joseph S. Gledowski, do hereby certify that on the 14 day of April, 1982, I found evidence of the Center quarter corner of Section 30 Township 35, North, Range 4 East, Fourth, Principal Meridian, as described hereon; and that from this evidence I established a new monument and accessories as described hereon to perpetuate the original location of this corner.

Resident witnesses:

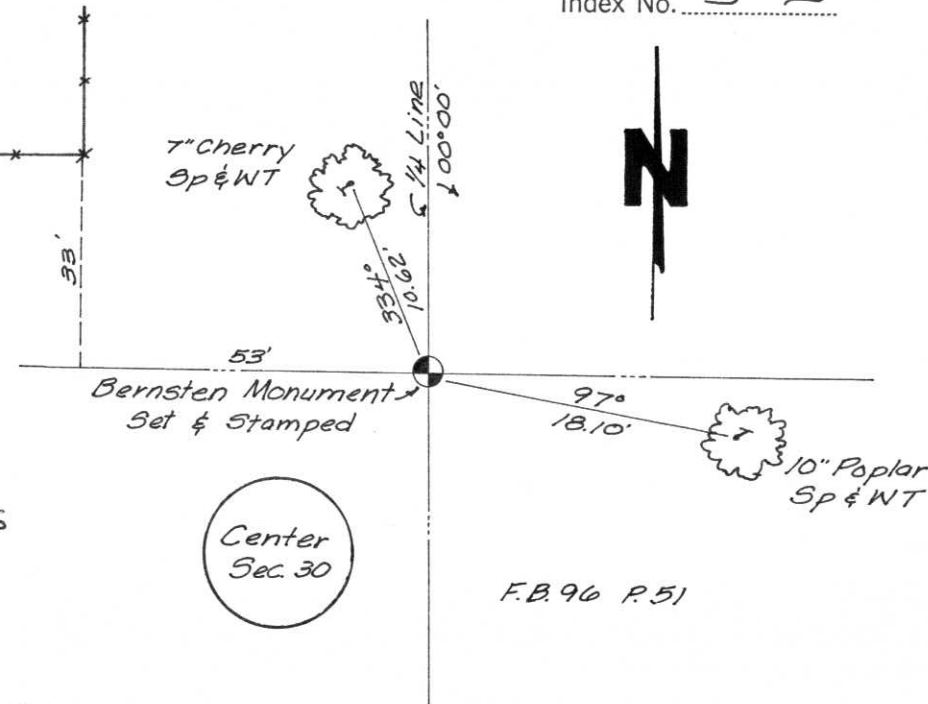
.....



○ = Corner monument restored.

History of original corner establishment:
 This corner was not set in the original government land survey. Its location must be determined by provisions in the Manual of Instructions for Survey of Public Lands

Description of corner evidence found:
 Corner location was determined by straight lines connecting the opposite quarter corners as provided for in the Manual



Description of monument and accessories I established to perpetuate the original location of this corner.

Berntsen cast aluminum monument placed on center of section - tied to witness monuments as shown. Trees blazed on sides facing monument and spike driven in base of tree at ground level. Fences tied as shown

Dated at _____, Wis., this 28 day of June, 1982.

Signature Joseph S. Gledowski Title Registered Land Surveyor Registration No. S-1333
 (County Surveyor, Registered Land Surveyor, or other duly authorized official)

Office of Register of Deeds, County of _____, I hereby certify that the within instrument was filed in this office for record on the _____ day of _____, 19____ at _____ o'clock _____ M.

(Register of Deeds)

By _____ Deputy