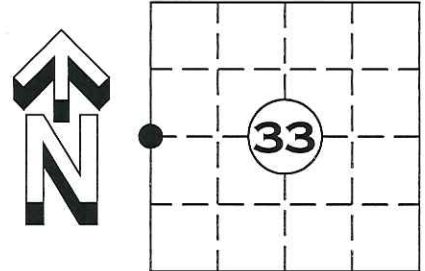


# U.S. PUBLIC LAND SURVEY MONUMENT RECORD

NOTE: THIS FORM IS INTENDED AND DESIGNED TO FULFILL ALL REQUIREMENTS OF WISCONSIN ADMINISTRATIVE CODE CHAPTER A-E 7.08 U.S. PUBLIC LAND SURVEY MONUMENT RECORD (3) (a)(b)(c)(d)(e)(f)(g)(h)(i). AN ADDITIONAL SHEET MAY BE ADDED IF NECESSARY TO CONFIRM WITH SAID REQUIREMENTS.

(a) CORNER LOCATION:  
 SECTION 33, TOWNSHIP 35 NORTH, RANGE 4 EAST  
 TOWN OF: SOMO, LINCOLN COUNTY  
 LINCOLN COUNTY COORDINATES:  
 NORTHING: 229985.450  
 EASTING: 312249.947

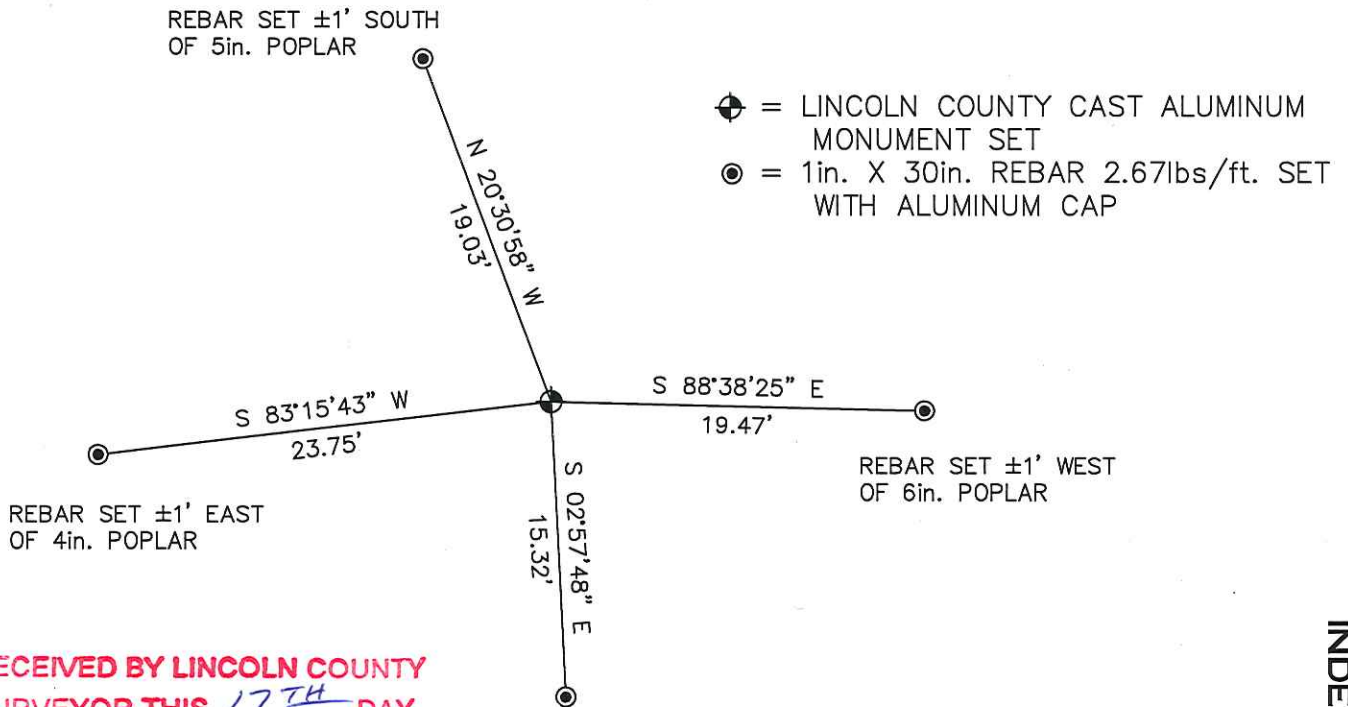


(b) HISTORY OF ORIGINAL CORNER:  
 ORIGINAL SURVEYOR: EDWARD D. PALMER APRIL 1865 - MAY 1865  
 IRONWOOD 6 N 72° W 5 LINKS  
 SUGAR 10 S 65° E 6 LINKS

(f)(g)(h) DESCRIPTION OF MONUMENT FOUND AT THIS CORNER AND IF IT WAS ACCEPTED STATE ALL EVIDENCE (MATERIAL, TESTIMONIAL, OCCUPATIONAL, PLATS, RECORDS, OTHER MONUMENTS) USED AS A BASIS FOR ESTABLISHING LOCATION. IF REESTABLISHED THROUGH LOST CORNER PROPORTIONATE METHODS, INDICATE ALL MONUMENTS, DISTANCES, AND DIRECTIONS USED TO ESTABLISH. INDICATE TYPE OF MONUMENT AND SIGN POST FOUND OR SET.

SEARCH OF AREA REVEALED NO EVIDENCE OF ORIGINAL CORNER. SET A LINCOLN COUNTY CAST ALUMINUM MONUMENT AT THE MID POINT AND ON LINE BETWEEN THE SOUTHWEST AND NORTHWEST CORNERS OF SECTION 33. LOCATION FIT WELL WITH THE CALLED FOR DISTANCE FROM THE CREEK TO THE SOUTH IN THE ORIGINAL NOTES. ALSO SET FOUR NEW WITNESS MONUMENTS

(c)(d)(e) PLAN VIEW OF CORNER WITH TIES TO AT LEAST FOUR WITNESSES. IF IN DISAGREEMENT WITH PREVIOUSLY ESTABLISHED CORNER, SHOW THE DISTANCE BETWEEN THE TWO CORNERS AND ALSO INDICATED THE TIE TO THE DISPUTED CORNER.



RECEIVED BY LINCOLN COUNTY  
 SURVEYOR THIS 17<sup>TH</sup> DAY  
 OF December 20 12  
*Tony Wall*  
 COUNTY SURVEYOR

REBAR SET ±1' EAST  
 OF 4in. POPLAR

SHEET 1 OF 2



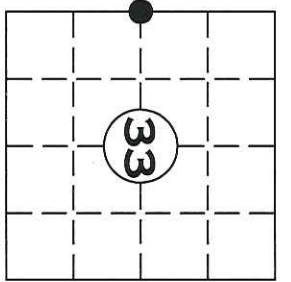
I DARREN B. KRZANOWSKI, REGISTERED LAND SURVEYOR NO. 2663, HEREBY CERTIFY THAT THE CORNER LOCATION ON THIS RECORD WAS REFERENCED BY ME OR UNDER MY DIRECTION AND CONTROL AND THAT THIS U.S. PUBLIC LAND SURVEY MONUMENT RECORD IS COMPLETE TO THE BEST OF MY KNOWLEDGE AND BELIEF.

*Darren B. Krzanowski*  
 DARREN B. KRZANOWSKI RLS 2663  
 DATED THIS 14<sup>TH</sup> DAY OF DECEMBER, 2012

INDEX NO. T35N R4E W9

# U.S. PUBLIC LAND SURVEY MONUMENT RECORD

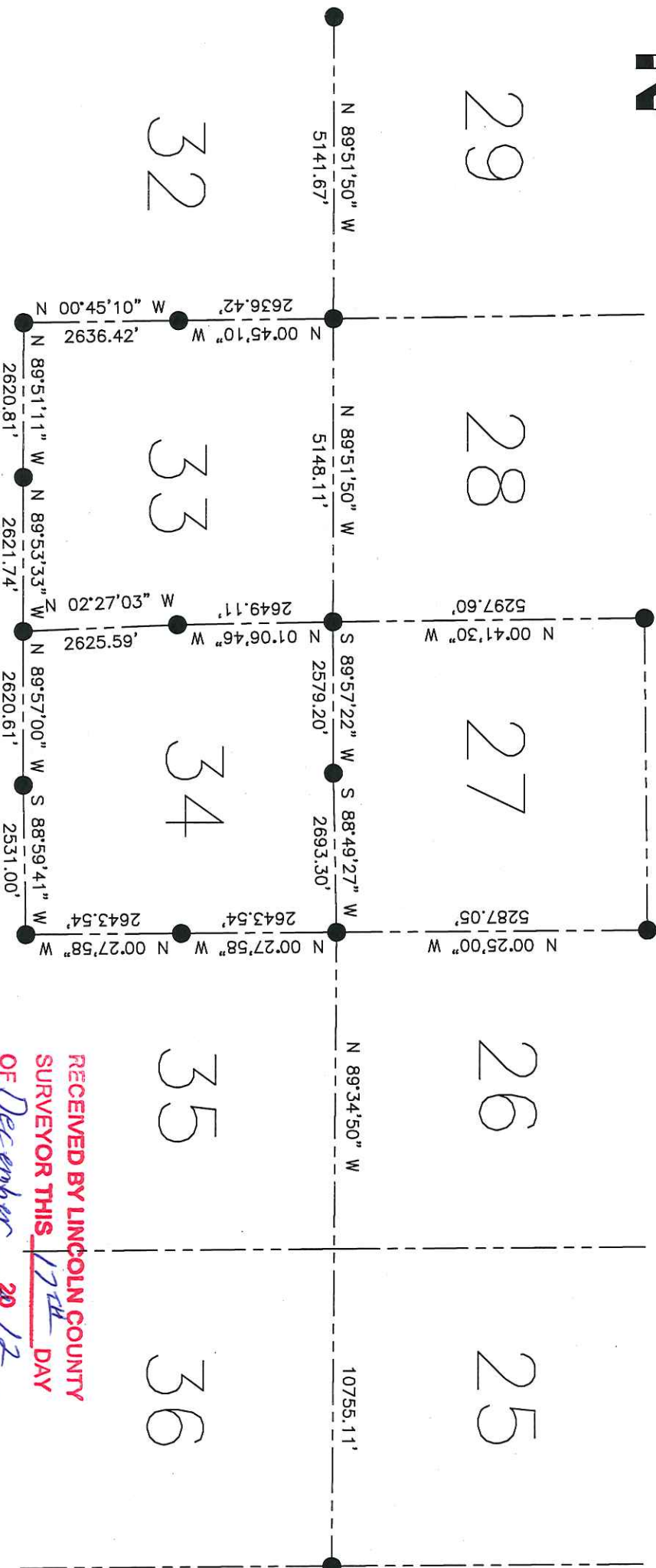
NOTE: THIS FORM IS INTENDED AND DESIGNED TO FULFILL ALL REQUIREMENTS OF WISCONSIN ADMINISTRATIVE CODE CHAPTER A-E 7.08 U.S. PUBLIC LAND SURVEY MONUMENT RECORD (3) (a)(b)(c)(d)(e)(f)(g)(h)(i). AN ADDITIONAL SHEET MAY BE ADDED IF NECESSARY TO CONFIRM WITH SAID REQUIREMENTS.



SECTION 33 TOWNSHIP 35 NORTH, RANGE 4 EAST  
TOWN OF: SOMO, LINCOLN COUNTY

INDEX NO. T35N R4E W9

- BASIS FOR CORNERS:**
1. THE N<sup>1</sup>/<sub>4</sub> CORNER OF SECTION 34 WAS ESTABLISHED HOLDING A LINE BETWEEN THE NE CORNER OF SECTION 36 AND THE NW CORNER OF SECTION 32 AND THE CENTERLINE OF HIGHWAY "T"
  2. THE NORTHEAST AND NORTHWEST CORNERS ESTABLISHED BY DOUBLE PROPORTION BETWEEN KNOWN CORNERS
  3. THE NORTHWEST CORNER WAS THE ESTABLISHED BY SINGLE PROPORTION BETWEEN KNOWN CORNERS.



SHEET 2 OF 2



RECEIVED BY LINCOLN COUNTY  
SURVEYOR THIS 17<sup>TH</sup> DAY  
OF December 20 12

[Signature]

COUNTY SURVEYOR









