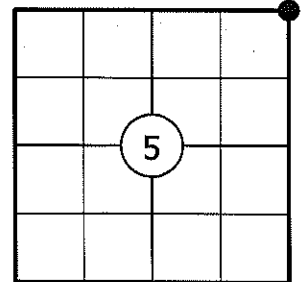


# U.S. PUBLIC LAND SURVEY MONUMENT RECORD

NOTE: THIS FORM IS INTENDED AND DESIGNED TO FULFILL ALL REQUIREMENTS OF WISCONSIN ADMINISTRATIVE CODE CHAPTER A-E 7.08 U.S. PUBLIC LAND SURVEY MONUMENT RECORD (3) (a)(b)(c)(d)(e)(f)(g)(h)(i). AN ADDITIONAL SHEET MAY BE ADDED IF NECESSARY TO CONFIRM WITH SAID REQUIREMENTS.

**(a) CORNER LOCATION:**

NORTHEAST CORNER OF SECTION 5  
 TOWNSHIP 34 NORTH  
 RANGE 4 EAST  
 TOWN OF TOMAHAWK  
 COUNTY OF LINCOLN



**(b) HISTORY OF ORIGINAL CORNER:**

ORIGINAL SURVEYOR: ALEX ANDERSON  
 DATE OF SURVEY: JULY, 1864

ORIGINAL BEARING TREES: 12" SUGAR - N20°W, 25 LKS  
 12" SUGAR - N59°E, 35 LKS  
 14" SUGAR - S30°E, 7 LKS  
 12" SUGAR - S45°W, 40 LKS

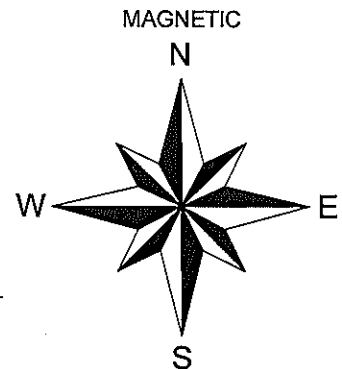
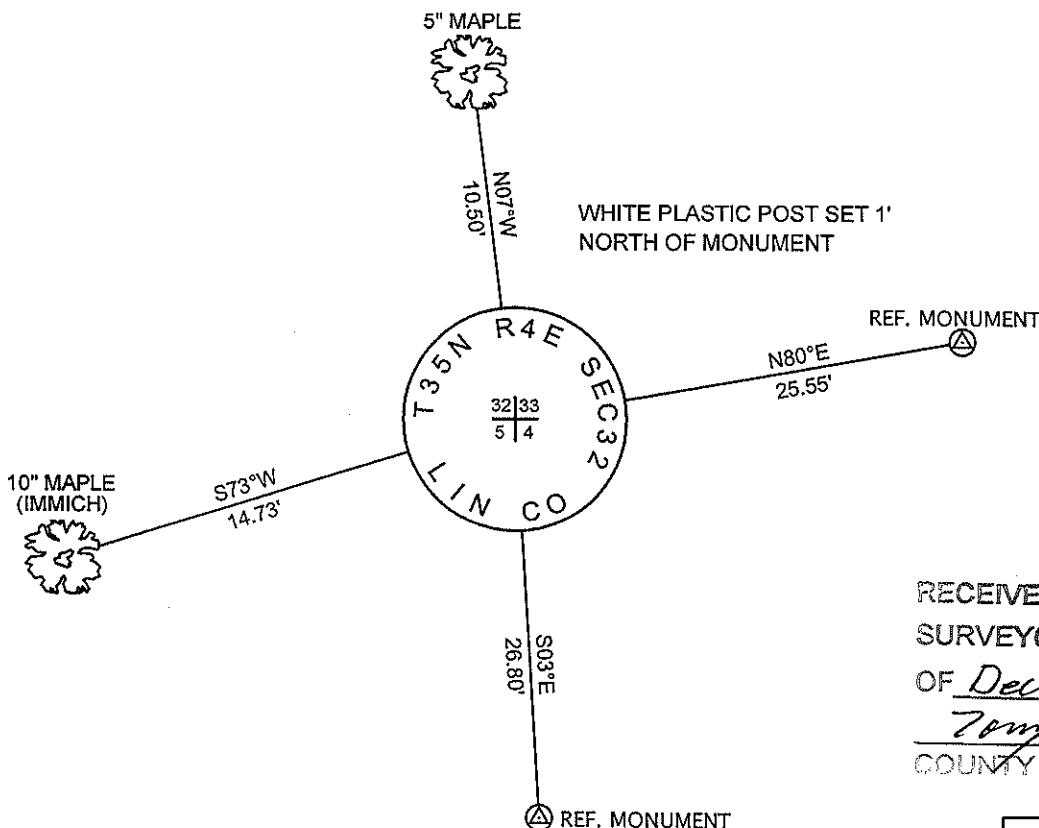
**(f)(g)(h) DESCRIPTION OF MONUMENT FOUND AT THIS CORNER AND IF IT WAS ACCEPTED STATE ALL EVIDENCE (MATERIAL, TESTIMONIAL, OCCUPATIONAL, PLATS, RECORDS, OTHER MONUMENTS) USED AS A BASIS FOR ESTABLISHING LOCATION. IF REESTABLISHING THROUGH LOST CORNER PROPORTIONATE METHODS, INDICATE ALL MONUMENTS, DISTANCES, AND DIRECTIONS USED TO ESTABLISH. INDICATE TYPE OF MONUMENT AND SIGN POST FOUND OR SET.**

1864: ALEX ANDERSON SET THE ORIGINAL SECTION CORNER POST.

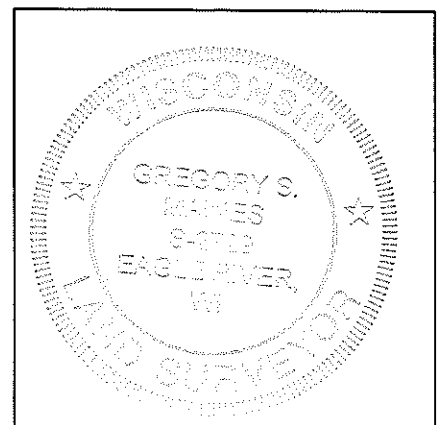
02/23/1981: WILLIAM IMMICH SET THE SECTION CORNER BY PROPORTION AND MADE 3 BEARING TREES: 6" MAPLE N05°E, 20.82' - 6" MAPLE S70°W, 14.60' - 5" MAPLE S11°E, 17.65'.

12/11/2010: I FOUND IMMICH'S 2" DIA BRASS CAPPED IRON PIPE STAMPED AS SHOWN BELOW AND AN OLD WHITE WOOD POST N12°W, 3'. I MADE TWO BEARING TREES AND SET TWO 3/4" DIA. CAPPED REBAR REFERENCE MONUMENTS AS SHOWN BELOW.

**(c)(d)(e) PLAN VIEW OF CORNER WITH TIES TO AT LEAST FOUR WITNESSES. IF IN DISAGREEMENT WITH PREVIOUSLY ESTABLISHED CORNER, SHOW THE DISTANCES BETWEEN THE TWO CORNERS AND ALSO INDICATE THE TIE TO THE DISPUTED CORNER.**



RECEIVED BY LINCOLN COUNTY  
 SURVEYOR THIS 30<sup>TH</sup> DAY  
 OF December 20 10  
*Tom Dall*  
 COUNTY SURVEYOR



INDEX NO. A-9

I GREGORY S. MAINES, REGISTERED LAND SURVEYOR NO. 2729, HEREBY CERTIFY THAT THE CORNER LOCATION ON THIS RECORD WAS REFERENCED BY ME OR UNDER MY DIRECTION AND CONTROL AND THAT THIS U.S. PUBLIC LAND SURVEY MONUMENT RECORD IS COMPLETE TO THE BEST OF MY KNOWLEDGE AND BELIEF.

*Gregory S. Maines* 12/29/10  
 SIGNATURE

**NORTHEAST CORNER OF SECTION 5, T34N, R04E**

**2" DIA. IRON PIPE WITH BRASS CAP FOUND**



**FACING NORTH**



**FACING SOUTH**



**FACING EAST**



**FACING WEST**

