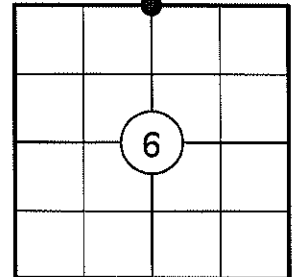


U.S. PUBLIC LAND SURVEY MONUMENT RECORD

NOTE: THIS FORM IS INTENDED AND DESIGNED TO FULFILL ALL REQUIREMENTS OF WISCONSIN ADMINISTRATIVE CODE CHAPTER A-E 7.08 U.S. PUBLIC LAND SURVEY MONUMENT RECORD (3) (a)(b)(c)(d)(e)(f)(g)(h)(i). AN ADDITIONAL SHEET MAY BE ADDED IF NECESSARY TO CONFIRM WITH SAID REQUIREMENTS.

(a) CORNER LOCATION:

NORTH 1/4 CORNER OF SECTION 6
 TOWNSHIP 34 NORTH
 RANGE 4 EAST
 TOWN OF TOMAHAWK
 COUNTY OF LINCOLN



(b) HISTORY OF ORIGINAL CORNER:

ORIGINAL SURVEYOR: ALEX ANDERSON
 DATE OF SURVEY: JULY, 1864

ORIGINAL BEARING TREES: 9" BIRCH - N02°W, 7 LKS
 18" HEMLOCK - S75°W, - LKS

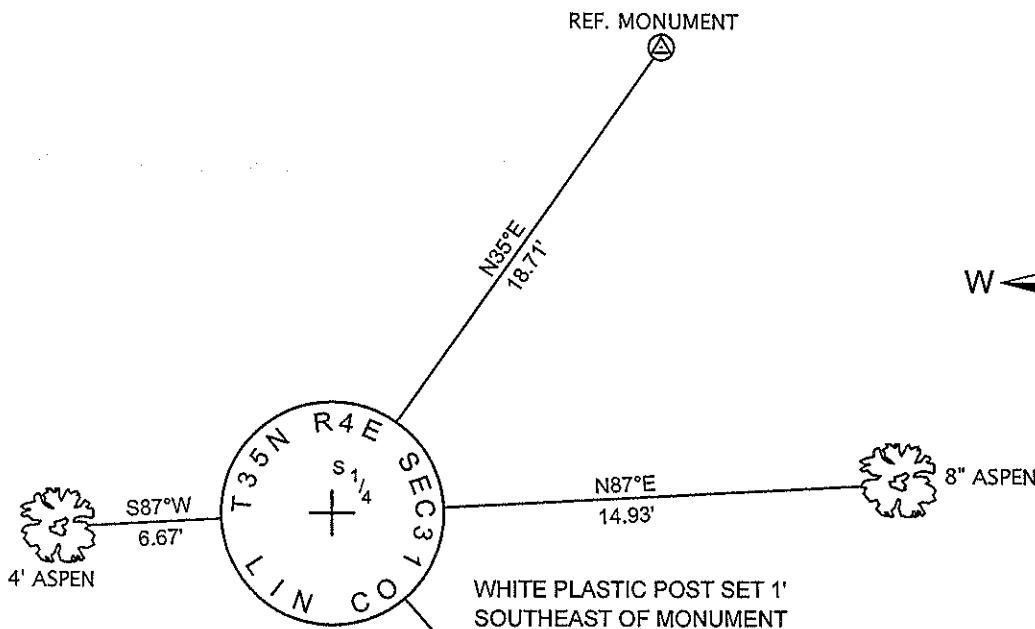
(f)(g)(h) DESCRIPTION OF MONUMENT FOUND AT THIS CORNER AND IF IT WAS ACCEPTED STATE ALL EVIDENCE (MATERIAL, TESTIMONIAL, OCCUPATIONAL, PLATS, RECORDS, OTHER MONUMENTS) USED AS A BASIS FOR ESTABLISHING LOCATION. IF REESTABLISHING THROUGH LOST CORNER PROPORTIONATE METHODS, INDICATE ALL MONUMENTS, DISTANCES, AND DIRECTIONS USED TO ESTABLISH. INDICATE TYPE OF MONUMENT AND SIGN POST FOUND OR SET.

1864: ALEX ANDERSON SET THE ORIGINAL 1/4 SECTION POST.

02/23/1981: WILLIAM IMMICH SET THE 1/4 CORNER BY PROPORTION AND MADE 3 BEARING TREES: 4" IRONWOOD S50°W, 32.17' - 4" MAPLE EAST, 32.60' - 4" MAPLE N10°E, 74.90'.

12/11/2010: I FOUND IMMICH'S 2" DIA BRASS CAPPED IRON PIPE STAMPED AS SHOWN BELOW AND AN OLD WHITE WOOD POST 2' NORTH OF THE PIPE. THE CORNER FALLS ± 30' NORTH OF A WOODS ROAD AND ±50' NORTHEAST OF A CREEK. I MADE TWO BEARING TREES AND SET TWO 3/4" DIA. CAPPED REBAR REFERENCE MONUMENTS AS SHOWN BELOW.

(c)(d)(e) PLAN VIEW OF CORNER WITH TIES TO AT LEAST FOUR WITNESSES. IF IN DISAGREEMENT WITH PREVIOUSLY ESTABLISHED CORNER, SHOW THE DISTANCES BETWEEN THE TWO CORNERS AND ALSO INDICATE THE TIE TO THE DISPUTED CORNER.

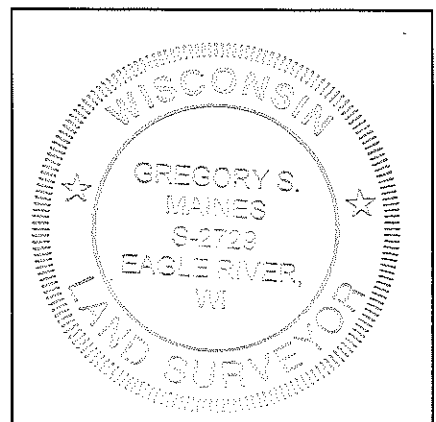


NOT TO SCALE
 DISTANCES TO BT'S ARE TO NAIL IN SIDE

RECEIVED BY LINCOLN COUNTY
 SURVEYOR THIS 30TH DAY
 OF December 20 10
Tom O'Brien
 COUNTY SURVEYOR

I GREGORY S. MAINES, REGISTERED LAND SURVEYOR NO. 2729, HEREBY CERTIFY THAT THE CORNER LOCATION ON THIS RECORD WAS REFERENCED BY ME OR UNDER MY DIRECTION AND CONTROL AND THAT THIS U.S. PUBLIC LAND SURVEY MONUMENT RECORD IS COMPLETE TO THE BEST OF MY KNOWLEDGE AND BELIEF.

Gregory S. Maines 12/24/10
 SIGNATURE



INDEX NO. A-3

NORTH 1/4 CORNER OF SECTION 6, T34N, R04E
2" DIA. IRON PIPE WITH BRASS CAP FOUND



FACING NORTH



FACING SOUTH



FACING EAST



FACING WEST

