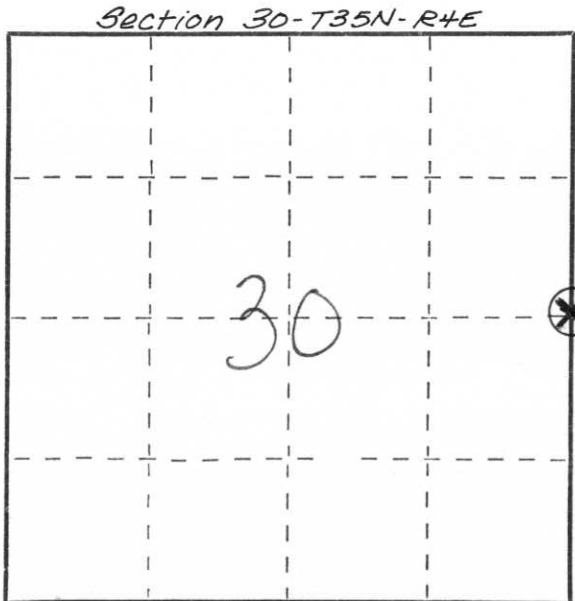


CERTIFIED LAND CORNER RESTORATION

State of Wisconsin }
 County of Portage } ss.

I, Joseph S. Glodowski, do hereby certify that on the 6 day of April, 1982, I found evidence of the East quarter corner of Section 30, Township 35, North, Range 4 East, Fourth, Principal Meridian, as described hereon; and that from this evidence I established a new monument and accessories as described hereon to perpetuate the original location of this corner.

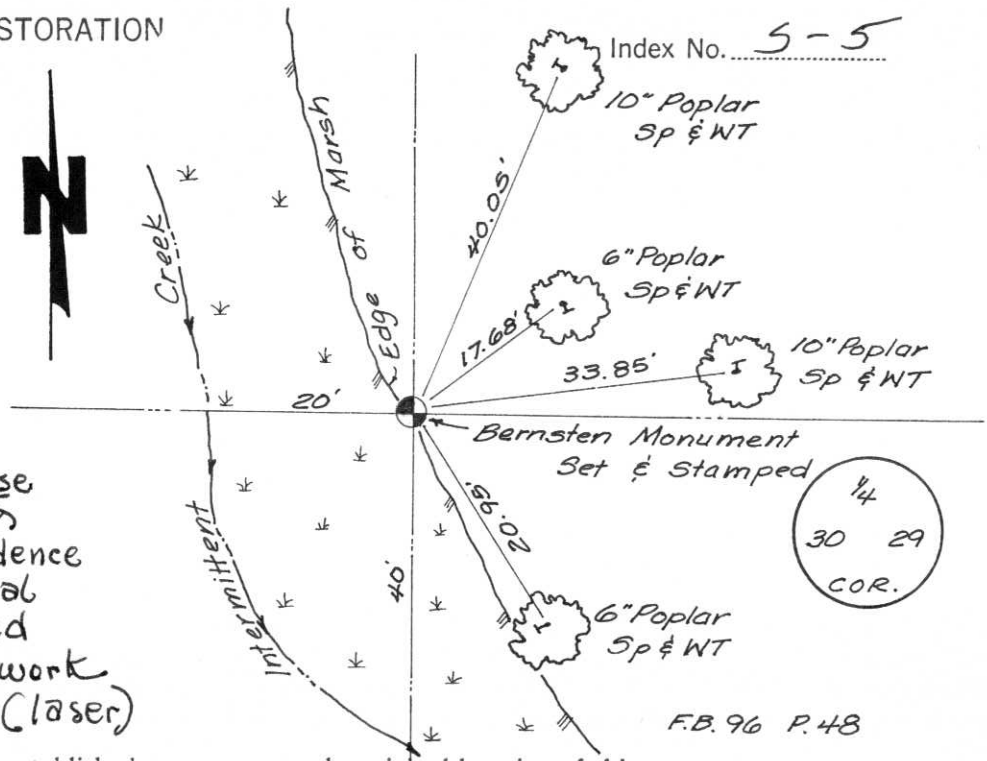
Resident witnesses:



○ = Corner monument restored.

History of original corner establishment:
 This corner was set in the original government survey.

Description of corner evidence found:
 Corner location was determined by a traverse of the entire section & use of all available evidence comparison with original field notes & data fed into computer. Field work Wild Theodolite & EDM (laser)



Description of monument and accessories I established to perpetuate the original location of this corner.

Berntsen cast aluminum monument placed on corner- witness blazed on face of tree toward monument; spike placed in witness trees at ground level.

Dated at Stevens Point, Wis., this 28 day of June, 1982.

Signature Joseph S. Glodowski Title Registered Land Surveyor Registration No. S-1333
(County Surveyor, Registered Land Surveyor, or other duly authorized official)

Office of Register of Deeds, County of _____, I hereby certify that the within instrument was filed in this office for record on the _____ day of _____, 19____ at _____ o'clock _____ M.

(Register of Deeds)

By _____ Deputy