

CERTIFIED LAND CORNER RESTORATION

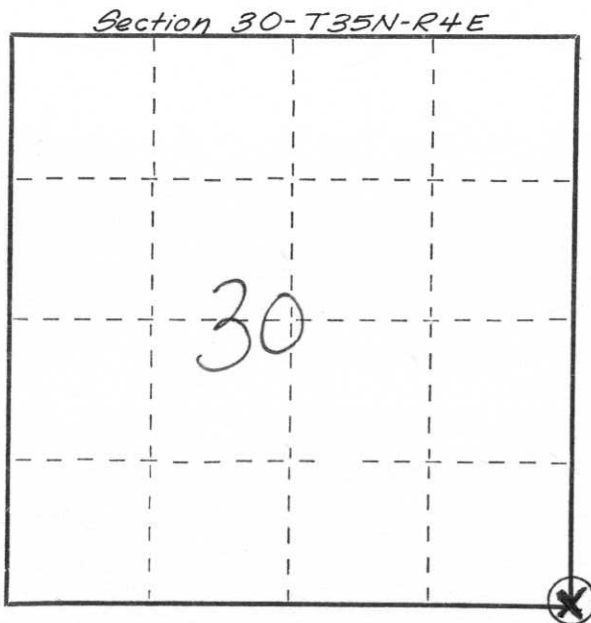
Index No. U-5

State of Wisconsin }  
County of Portage } ss.

I Joseph S. Glodowski, do hereby certify that on the 13 day of May, 1982, I found evidence of the Southeast corner of Section 30 Township 35, North, Range 4 East, Fourth, Principal Meridian, as described hereon; and that from this evidence I established a new monument and accessories as described hereon to perpetuate the original location of this corner.

Resident witnesses:

.....  
.....  
.....

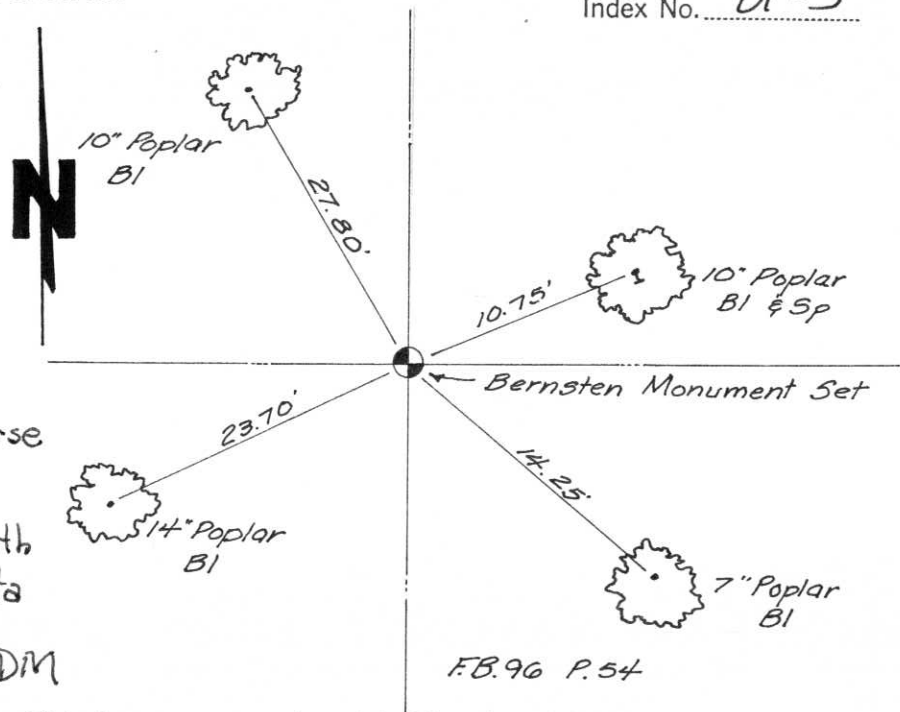


○ = Corner monument restored.

History of original corner establishment:  
This corner was established in the original government survey.

Description of corner evidence found:  
corner location was determined by a traverse of the entire section & using all available evidence & comparing with original field notes & data fed into computer. Field work Wild Theodolite & EDM

Description of monument and accessories I established to perpetuate the original location of this corner.  
Berntsen cast aluminum monument set on corner - witness trees tied and blazed on side facing corner - nail set in base of tree at ground level.



Dated at Stevens Point, Wis., this 28 day of June, 1982.

Signature Joseph S. Glodowski Title Registered Land Surveyor Registration No. S-1333  
(County Surveyor, Registered Land Surveyor, or other duly authorized official)

Office of Register of Deeds, County of \_\_\_\_\_, I hereby certify that the within instrument was filed in this office for record on the \_\_\_\_\_ day of \_\_\_\_\_, 19\_\_\_\_ at \_\_\_\_\_ o'clock \_\_\_\_\_ M.

(Register of Deeds)

By \_\_\_\_\_ Deputy