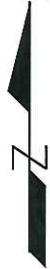
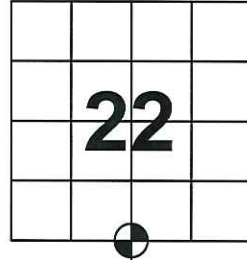


U.S. PUBLIC LAND SURVEY MONUMENT RECORD

Note: This form is intended and designed to fulfill all requirements of Wisconsin Administrative Code, Chapter A-E 7.08, U.S. Public Land Survey Monument Record (3) (a) (b) (c) (d) (e) (f) (g) (h) (i). An additional sheet may be added if necessary to conform with said requirements.

(a) Corner location: Township 35 North
 Range 4 East
 Town/City/Village Somo
 County Lincoln



(b) (f) (g) (h) Description of monument found at this corner and if it was accepted, state all evidence (material, testimonial, occupational, plats, records, other monuments) used as basis for accepting. If not accepted or if nothing was found, state evidence used as basis for establishing location. If reestablished through lost corner proportionate methods, indicate all monuments, distances and directions used to establish.

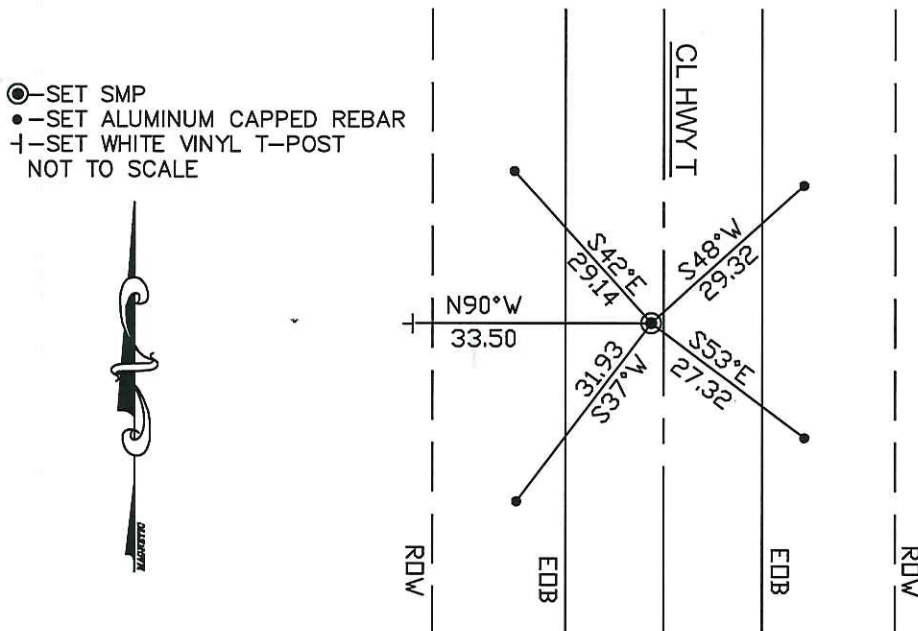
April 1865 – May 1865 – Palmer, Edward D Set 1/4 post at midpoint 40.6 chains.
 Ties: Spruce 3 N57°W 10 lks
 Spruce 2.5 S40°E 6 lks

Dec. 1924 – D.S. Burnett set monument at intersection of roads. No trees.

Oct. 1995 – Schmit, Lester J. excavated with the County Gradall, found no evidence and set no monument.

April 2012 – Dallman, Anthony R. set SMP 1' West of CL Hwy T. Set per Burnett's call for road intersection. Intersection no longer exists, found evidence of old road bed and ditch west of Hwy T on high ground west of swamp. Extended old read bed and ditch alignment to intersect CL Hwy T. Set ties in shoulder of Hwy as shown below:

(c) (d) (e) Plan view of corner with ties to at least 4 witness monuments. If in disagreement with previously established corner, show the distance between the two corners and also indicate the ties to the disputed corner.



(i) I, Anthony R. Dallman

(type or print name) certify that the corner location on this record was determined by me or under my direction and control and that this U.S. Public Land Survey Monument Record is correct and complete to the best of my knowledge and belief.

Anthony R. Dallman
 Signature 11/05/12
Date

Index No. Q-15

U.S. PUBLIC LAND SURVEY MONUMENT RECORD

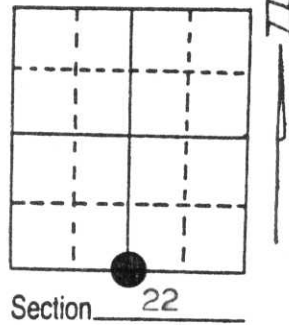
Note: This form is intended and designed to fulfill all requirements of Wisconsin Administrative Code, Chapter A-E 5.02, U.S. Public Land Survey Monument Record (3) (a) (b) (c) (d) (e) (f) (g) (h) (i). An additional sheet may be added if necessary to conform with said requirements.

(a) Corner location: Township 35 North

Range 4 East

Town/Range Somo

County Lincoln



(b) (f) (g) (h) Description of monument found at this corner and if it was accepted, state all evidence (material, testimonial, occupational, plats, records, other monuments) used as a basis for accepting. If not accepted or if nothing was found, state evidence used as basis for establishing location. If reestablished through lost corner proportionate methods, indicate all monuments, distances and directions used to establish. Original Gov't. Survey: Apr. 1865 by Edward Palmer, set wood post for corner with bearings, spruce 3 N 57° W 10 links & spruce 2½ S 40° E 6 links. On 25 Oct 95, the Lincoln County Highway Department gradeall was used to dig in County Trunk Highway "T" to locate evidence of this corner. The roadbed makes a definite bend at the approximate corner location. Excavation was made to below the corduroy, into the native swamp material. No evidence of the corner was found and no corner was reestablished.

(c) (d) (e) Plan view of corner with ties to at least 4 witness monuments. If in disagreement with previously established corner, show the distances between the two corners and also indicate the ties to the disputed corner.

RECEIVED AT LINCOLN COUNTY
COURTHOUSE THIS 14th DAY
OF Dec. 19 95
Pat Priske
TAX DESCRIPTION OFFICE

(i) I, Lester J. Schmit

(type or print name) certify that the corner location on this record was determined by me or under my direction and control and that this U.S. Public Land Survey Monument Record is correct and complete to the best of my knowledge and belief.

Lester J. Schmit
Signature

11 Dec 95
Date



Index No. Q-15









