

U.S. PUBLIC LAND SURVEY MONUMENT RECORD

Note: This form is intended and designed to fulfill all requirements of Wisconsin Administrative Code, Chapter A-E 7.08, U.S. Public Land Survey Monument Record (3) (a) (b) (c) (d) (e) (f) (g) (h) (i). An additional sheet may be added if necessary to conform with said requirements.

(a) Corner location: Township 35 North

Range 4 East

Town/City/Village Somo

County Lincoln



(b) (f) (g) (h) Description of monument found at this corner and if it was accepted, state all evidence (material, testimonial, occupational, plats, records, other monuments) used as a basis for accepting. If not accepted or if nothing was found, state evidence used as basis for establishing location. If reestablished through lost corner proportionate methods, indicate all monuments, distances and directions used to establish.

1865 - Edward D. Palmer set Quarter Section Corner post.
Sugar 9 S70°W 19 lks. Sugar 7 S10°E 38 lks.

1923 - D.S. Burnett found no evidence of original B.T.'s, but by evidence of J.F. Kavanaugh (Chariman Town of Lynn, Oneida County, T.36,37N. R.4E. 1914-1915) who ran lines West from here some years ago set monument at intersection of roads and marked up bearings. Hard Maple 12" N 9° E 79 ¼ lks, Hemlock 12" N 86° E 47 lks

1924 - D.S. Burnett "Chained distance between Section corners and found 70.33 chains to be total distance. Set 1/4 Corner on line at intermediate distance. Marked B.T.'s S. Elm Stump 20" S86°E 41 lks., H. Maple N 17°E 97 lks."

1982 - William G. Immich reestablished corner as a lost corner by proportional measurement, disregarding Burnett's monuments and evidence.

2009 - Antohny R. Dallman dug with Gradall at midpoint between Section Corners and found nothing.

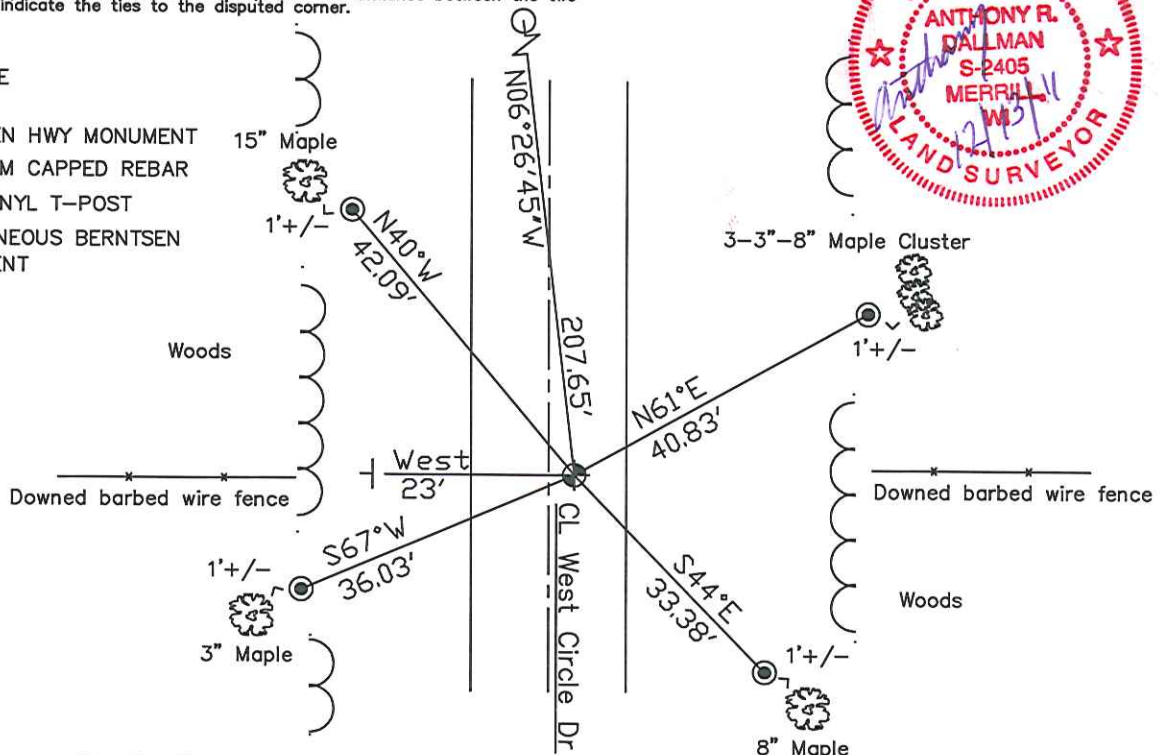
2011 - Anthony R. Dallman Set Berntsen Hwy monument at midpoint between the NE Sec. corner and the SE Sec. corner of Section 18 per D.S. Burnett notes and monuments, S06°26'45"E 207.64' from Immich's erroneous Berntsen Hwy Monument. Old downed barbed wire fences run East and West from calc location. Monument set 8" below grade East of CL West Circle Dr. Tied as shown below:

(c) (d) (e) Plan view of corner with ties to at least 4 witness monuments. If in disagreement with previously established corner, show the distance between the two corners and also indicate the ties to the disputed corner.



NOT TO SCALE

- ⊕ - SET BERNTSEN HWY MONUMENT
- ⊙ - SET ALUMINUM CAPPED REBAR
- ⊥ - SET WHITE VINYL T-POST
- - FOUND ERRONEOUS BERNTSEN HWY MONUMENT



(i) I, Anthony R. Dallman

(type or print name) certify that the corner location on this record was determined by me under my direction and control and that this U.S. Public Land Survey Monument Record is correct and complete to the best of my knowledge and belief.

Anthony R. Dallman
Signature

12/13/11
Date

Index No. _____

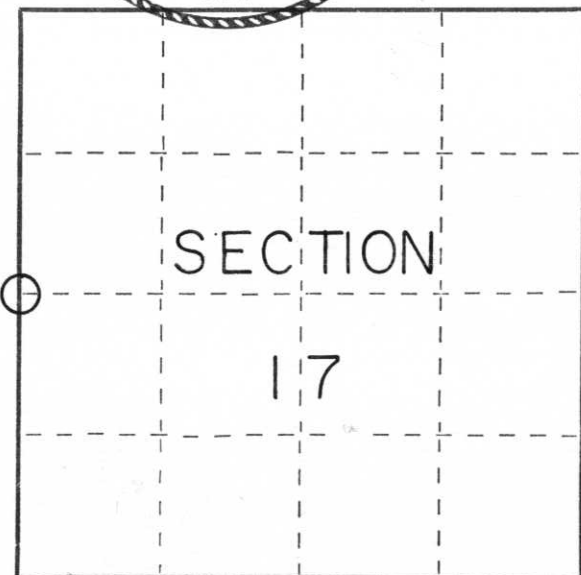
CERTIFIED LAND CORNER RESTORATION

Index No. K-5

State of Wisconsin }
County of LINCOLN } ss.

I WILLIAM IMMICH, do hereby certify that on the 27th day of SEPTEMBER, 1982, I found evidence of the WEST 1/4 corner of SECTION 17 Township 35, North, Range 4 EAST, Fourth, Principal Meridian, as described hereon; and that from this evidence I established a new monument and accessories as described hereon to perpetuate the original location of this corner.

Resident witnesses:



○ = Corner monument restored.

History of original corner establishment:

ORIGINAL GOVERNMENT SURVEY SET CORNER AT 40.00 CHS 1865
A. ANDERSON SURVEYOR

1923 BURNETT LOOKED FOR CORNER, FOUND NO ORIGINAL EVIDENCE PROPORTIONED CORNER FROM SECTION CORNERS USING ERRONEOUS CORNER FOR NW SEC COR 17, RESULTING IN ERRONEOUS PLACEMENT OF HIS CORNER, TREATED CORNER AS LOST, NO EVIDENCE LEADING TO ORIGINAL CORNER.

Description of corner evidence found:

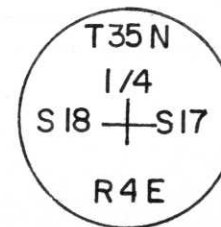
CORNER LOST RESET BY PROPORTIONAL MEASUREMENT.

Description of monument and accessories I established to perpetuate the original location of this corner.

SET LINCOLN COUNTY MONUMENT STAMPED AS SHOWN.

BEARING TREES:

36" YELLOW BIRCH WEST 3.03' SPK IN BLAZE
5" MAPLE N55° E 68.50' PK IN BLAZE
5" MAPLE SOUTH 42.75' PK IN BLAZE



Dated at RHINELANDER, Wis., this 28th day of SEPTEMBER, 1982.

Signature William Immich Title REGISTERED LAND SURVEYOR Registration No. 1383
(County Surveyor, Registered Land Surveyor, or other duly authorized official)

Office of Register of Deeds, County of _____, I hereby certify that the within instrument was filed in this office for record on the _____ day of _____, 19____ at _____ o'clock _____ M.

(Register of Deeds)

By _____ Deputy