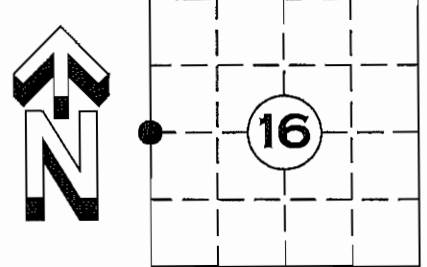


# U.S. PUBLIC LAND SURVEY MONUMENT RECORD

NOTE: THIS FORM IS INTENDED AND DESIGNED TO FULFILL ALL REQUIREMENTS OF WISCONSIN ADMINISTRATIVE CODE CHAPTER A-E 7.08 U.S. PUBLIC LAND SURVEY MONUMENT RECORD (3) (a)(b)(c)(d)(e)(f)(g)(h)(i). AN ADDITIONAL SHEET MAY BE ADDED IF NECESSARY TO CONFIRM WITH SAID REQUIREMENTS.

(a) CORNER LOCATION: W  $\frac{1}{4}$  CORNER  
SECTION 16, TOWNSHIP 35 NORTH, RANGE 4 EAST  
TOWN OF SOMO, LINCOLN COUNTY  
LINCOLN COUNTY COORDINATES:  
NORTHING: 245533.778  
EASTING: 312475.938



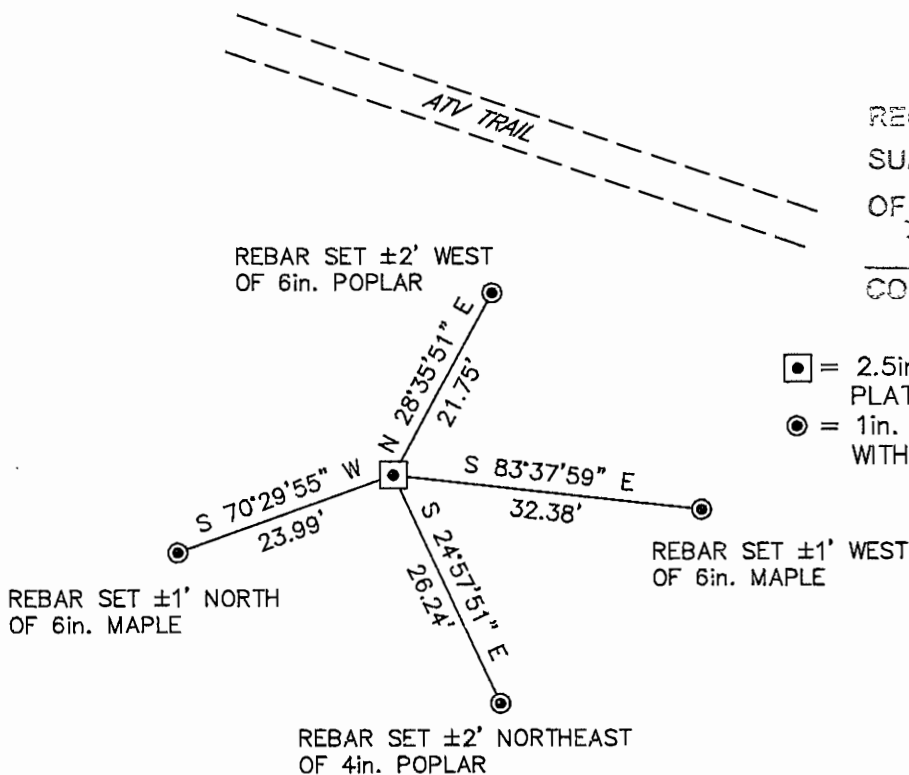
(b) HISTORY OF ORIGINAL CORNER:  
ORIGINAL SURVEYOR:  
EDWARD D. PALMER APRIL 1865 – MAY 1865  
IRON WOOD 8 S 28° W 10 LINKS  
SUGAR 8 N 64° E 17 LINKS

(f)(g)(h) DESCRIPTION OF MONUMENT FOUND AT THIS CORNER AND IF IT WAS ACCEPTED STATE ALL EVIDENCE (MATERIAL, TESTIMONIAL, OCCUPATIONAL, PLATS, RECORDS, OTHER MONUMENTS) USED AS A BASIS FOR ESTABLISHING LOCATION. IF REESTABLISHED THROUGH LOST CORNER PROPORTIONATE METHODS, INDICATE ALL MONUMENTS, DISTANCES, AND DIRECTIONS USED TO ESTABLISH. INDICATE TYPE OF MONUMENT AND SIGN POST FOUND OR SET.

28 NOV. 1924: D.S. BURNETT, SET  $\frac{1}{4}$  CORNER EQUIDISTANT ON LINE MARKED B.T.S  
B. ASH 6" N 74° E 15 LINKS, S. ELM 14" S 35° E 71 LINKS, Y. BIRCH 16" S 30° E 54 LINKS

21 MARCH 2012; FOUND A 2.5in. OD IRON PIPE WITH SQUARE PLATE ON TOP IN GOOD CONDITION. MONUMENT IS CONSISTENT WITH THOSE SET BY D.S. BURNETT IN THIS AREA. ACCEPTED MONUMENT AND SET FOUR WITNESS MONUMENTS

(c)(d)(e) PLAN VIEW OF CORNER WITH TIES TO AT LEAST FOUR WITNESSES. IF IN DISAGREEMENT WITH PREVIOUSLY ESTABLISHED CORNER, SHOW THE DISTANCE BETWEEN THE TWO CORNERS AND ALSO INDICATED THE TIE TO THE DISPUTED CORNER.



RECEIVED BY LINCOLN COUNTY  
SURVEYOR THIS 30<sup>TH</sup> DAY  
OF March 2012  
*Tom Dadd*  
COUNTY SURVEYOR

- ◻ = 2.5in. OD IRON PIPE WITH PLATE ON TOP FOUND
- = 1in. X 30in. REBAR 2.67lbs/ft. WITH ALUMINUM CAP SET

I DARREN B. KRZANOWSKI, REGISTERED LAND SURVEYOR NO. 2663, HEREBY CERTIFY THAT THE CORNER LOCATION ON THIS RECORD WAS REFERENCED BY ME OR UNDER MY DIRECTION AND CONTROL AND THAT THIS U.S. PUBLIC LAND SURVEY MONUMENT RECORD IS COMPLETE TO THE BEST OF MY KNOWLEDGE AND BELIEF.

*Darren Krzanowski*  
DARREN B. KRZANOWSKI RLS 2663  
DATED THIS 23<sup>RD</sup> DAY OF MARCH 2012



INDEX NO. T35N R4E K9









