

# U S PUBLIC LAND SURVEY MONUMENT RECORD

NOTE: This form is intended and designed to fulfill all requirements of Wisconsin Administrative Code, Chapter A-E 7.08 U.S. Public Land Survey Monument Record (3) (a-i)

A-E 7.08(3)(a) Identity of corner:  
SOUTHEAST CORNER SECTION 16,  
TOWNSHIP 35 NORTH,  
RANGE 04 EAST OF THE 4TH PM,  
TOWN OF SOMO,  
COUNTY OF LINCOLN

WISCORS - LINCOLN COUNTY  
N: 243,076.853 USft (243,076.730)  
E: 317,675.618 USft (317,675.717)  
Datum: NAD83 (2011)  
GNSS Method RTN - Direct  
GNSS Control WISCORS VRS



The coordinate value shown has been verified by the average of two or more GPS observations at a markedly different time. Coordinates shown in parenthesis are provided by Lincoln County.

A-E 7.08(3)(b)

Original Surveyor: Edward D. Palmer

Date of Original Survey Commenced: April 22, 1865  
Completed: May 5, 1865

Original Accessories:  
Tamarac 12 N 35° W 19 Links  
Cedar 6 N 41° E 32 Links  
Spruce 4 S 37° E 21 Links  
Fir 8 S 20° W 14 Links

September 28, 1923 - Surveyor D.S. Burnett - found and accepted a "scribed stake, and two stumps of original B.T. (Tam 12" N.35°E. 19lks, and Fir 8" S.20W. 14lks)". Burnett set monument and made 2 new bearing trees:  
Dead Tamarac 14" N.84°W. 77 1/2lks, Tam. stump 16" S.6°W. 43 1/2lks, per notes.  
Burnett is presumed to have set iron pipe monuments with steel plate attached by iron rod.

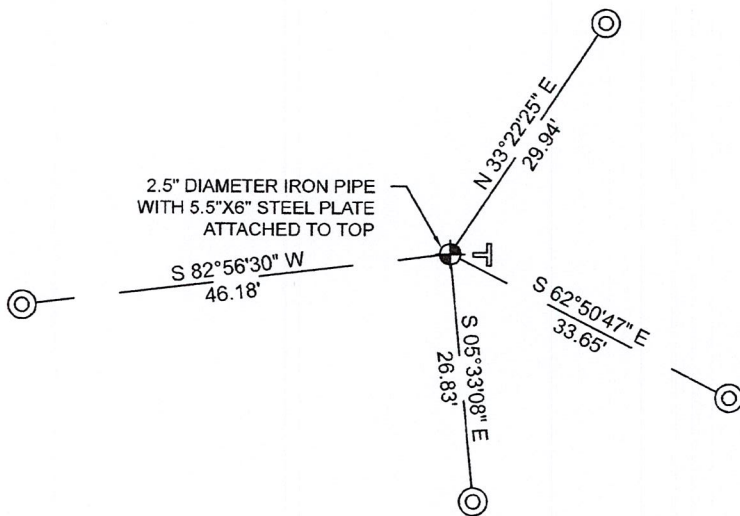
February 8, 1979 - Genisot and Associates - indicate this position as "SEC. COR. 2" capped I.P." on Lincoln County map M182A.

April 16, 2012 - Surveyor 2663 - Darren B. Krzanowski - indicates this position as "N: 243076.730 E: 317675.718, corner location per county survey records" on Lincoln County Section Summary - Section 16, Township 35 North, Range 4 East, Town of Somo.

October 19, 2022 - While performing the 2022 Lincoln County PLSS Corner Remonumentation and GPS Services project, I found a 2.5" diameter iron pipe, with a 5.5" x 6" steel plate attached to the top by a bent .5" diameter iron rod. The monument is near the computed position provided by Lincoln County, and extends ±24" above ground. I established 4 new reference monuments as shown below.

A-E 7.08(3)(c)(d) Plan view of corner with references to at least 4 witness monuments.

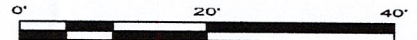
BEARINGS LISTED TO THE NEAREST SECOND ARE REFERENCED TO WISCONSIN COUNTY COORDINATE REFERENCE SYSTEM - LINCOLN COUNTY ZONE. ALL OTHER BEARINGS ARE MAGNETIC



RECEIVED BY LINCOLN COUNTY  
SURVEYOR THIS 27<sup>TH</sup> DAY  
OF December 20 22  
Jeffrey DeMuth  
COUNTY SURVEYOR

## LEGEND

- 2.5" diameter iron Pipe, found
- 7/8" diameter X 30" long - iron rod with 2" diameter aluminum cap, set
- Vinyl T-post, set ±1.0 feet east of corner



A-E 7.08(3)(e) 1865 Surveyor set a post, 1923 Surveyor set a monument, 1979 Surveyor had a 2" capped I.P., 2012 Surveyor had coordinates. I found a 2.5" diameter iron pipe, with a 5.5" x 6" steel plate attached to the top by a bent .5" diameter iron rod.

A-E 7.08(3)(f) I accept this monument as a FOUND PERPETUATED LOCATION of the corner.

A-E 7.08(3)(g)(h) This corner was not determined through lost-corner-proportionate methods.

A-E 7.08(3)(i) I, Jeffrey L. DeMuth, Professional Land Surveyor No. S-2656, hereby certify that the corner location on this record was determined by the Lincoln County Surveyor, and the monuments found or set as shown hereon were measured by me or under my direction and control, and that this U.S. Public Land Survey Monument Record is correct and complete to the best of my knowledge, and belief.

\_\_\_\_\_  
SIGNATURE  
December 14, 2022  
DATE



M-13

## REPORT

### 2022-Lincoln County PLSS Corner Remonumentation and GPS Services

Wisconsin Corner Point Identification Number: 43504160000

Surveyor: Jeffrey L. DeMuth – S2656

Corner monument: Found 2.5" diameter iron pipe with a 5.5" x 6" steel plate attached to the top by a bent .5" diameter iron rod through center of pipe.

Field Book: Cardinal North – Lincoln Co. Remon. – 2022-00

Page: 54

Horizontal Datum: WisCRS – Lincoln County Zone – NAD83(2011)

Date / time of initial measurement:

October 19, 2022 - Start 12:42:28 CDT – End 12:53:16 CDT

Reference monuments:

4 – Set - 7/8" diameter X 30" long iron rods with 2" diameter Lincoln Co. aluminum cap.

#### Coordinate Table

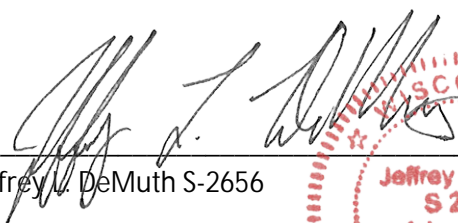
	County Provided	2022 Measurement	Difference
North	243076.730	243076.853	-0.12
East	317675.717	317675.618	0.10

Observed coordinates match with existing coordinates within reason.


Request Data Log for more information.

Additional Notes:

Monument extends ±24" above ground.

  
Jeffrey L. DeMuth S-2656

November 15, 2022  
Date



43504160000\_Mon-N



43504160000\_North



4350416000\_West

PLEASE  
DO NOT  
DISTURB  
NEARBY

SM  
U  
A  
R  
K  
E  
R  
E  
Y  
R

NO  
TO  
BE  
USED  
FOR  
ANY  
OTHER  
PURPOSES  
UNLESS  
SPECIFICALLY  
NOTED  
ON  
THE  
TAG

4350416000



4350416000\_South



4350416000\_East



43504160000\_Mon-Lean

