

U S PUBLIC LAND SURVEY MONUMENT RECORD

NOTE: This form is intended and designed to fulfill all requirements of Wisconsin Administrative Code, Chapter A-E 7.08 U.S. Public Land Survey Monument Record (3) (a-i)

A-E 7.08(3)(a) Identity of corner:
SOUTH 1/4 CORNER SECTION 12,
TOWNSHIP 35 NORTH,
RANGE 04 EAST OF THE 4TH PM,
TOWN OF SOMO,
COUNTY OF LINCOLN

WISCORS - LINCOLN COUNTY
N: 248,470.668 USft (248,470.654)
E: 330,683.374 USft (330,683.266)
Datum: NAD83 (2011)
GNSS Method RTN - Direct
GNSS Control WISCORS VRS



The coordinate value shown has been verified by the average of two or more GPS observations at a markedly different time. Coordinates shown in parenthesis are provided by Lincoln County.

A-E 7.08(3)(b)

Original Surveyor: Edward D. Palmer

Date of Original Survey	Commenced:	April 22, 1865	Original Accessories:		
	Completed:	May 5, 1865	Hemlock	9	N 70° E 7 Links
			Hemlock	5	S 22° E 23 Links

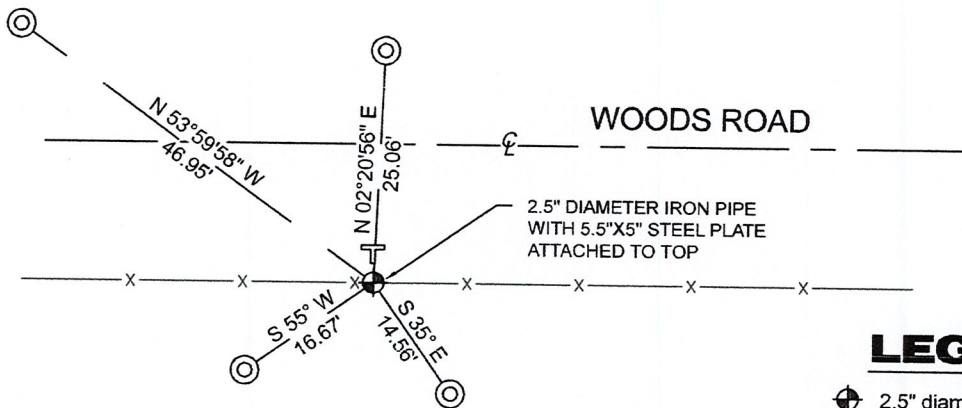
September 28, 1923 - Surveyor D.S. Burnett - found and accepted a "scribed stake, and one original B.T. (Hem 9" N.70°E. 7lks)". Burnett set monument and made 2 new bearing trees:
Hemlock 16" N.59°E. 49 1/2 lks, Hemlock Stp 14" N.38°W. 55lks, per notes.
Burnett is presumed to have set iron pipe monuments with steel plate attached by iron rod.

June 11, 2012 - Surveyor 2343 - Kevin P. Bixby - indicates this position as "S. 1/4 corner Section 12 (see U.S.P.L.S. form)" no description of monument, on Lincoln County map M619B.

October 27, 2022 - While performing the 2022 Lincoln County PLSS Corner Remonumentation and GPS Services project, I found a 2.5" diameter iron pipe, with a 5.5" x 5" steel plate attached to the top by a bent .5" diameter iron rod. The monument is near the computed position provided by Lincoln County. I established 4 new reference monuments as shown below.

A-E 7.08(3)(c)(d) Plan view of corner with references to at least 4 witness monuments.

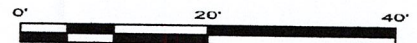
BEARINGS LISTED TO THE NEAREST SECOND ARE REFERENCED TO WISCONSIN COUNTY COORDINATE REFERENCE SYSTEM - LINCOLN COUNTY ZONE. ALL OTHER BEARINGS ARE MAGNETIC



RECEIVED BY LINCOLN COUNTY
SURVEYOR THIS 27TH DAY
OF December 20 22
Jeffrey DeMuth
COUNTY SURVEYOR

LEGEND

- 2.5" diameter iron Pipe, found
- 7/8" diameter X 30" long - iron rod with 2" diameter aluminum cap, set
- Vinyl T-post, set ±4.5 feet north of corner



A-E 7.08(3)(e) 1865 Surveyor set a post, 1923 Surveyor set a monument, 2012 surveyor did not provide a description. I found a 2.5" diameter iron pipe, with a 5.5" x 5" steel plate attached to the top by a bent .5" diameter iron rod.

A-E 7.08(3)(f) I accept this monument as a FOUND PERPETUATED LOCATION of the corner.

A-E 7.08(3)(g)(h) This corner was not determined through lost-corner-proportionate methods.

A-E 7.08(3)(i) I, Jeffrey L. DeMuth, Professional Land Surveyor No. S-2656, hereby certify that the corner location on this record was determined by the Lincoln County Surveyor, and the monuments found or set as shown hereon were measured by me or under my direction and control, and that this U.S. Public Land Survey Monument Record is correct and complete to the best of my knowledge, and belief.

Jeffrey L. DeMuth

SIGNATURE

December 14, 2022

DATE



I-23

REPORT

2022-Lincoln County PLSS Corner Remonumentation and GPS Services

Wisconsin Corner Point Identification Number: 43504120020

Surveyor: Jeffrey L. DeMuth – S2656

Corner monument: Found 2.5" diameter iron pipe with a 5.5" x 5" steel plate attached by a bent .5" diameter iron rod through center of pipe.

Field Book: Cardinal North – Lincoln Co. Remon. – 2022-00

Page: 61

Horizontal Datum: WisCRS – Lincoln County Zone – NAD83(2011)

Date / time of initial measurement:

October 27, 2022 - Start 13:20:18 CDT – End 13:54:32 CDT

Reference monuments:

4 – Set - 7/8" diameter X 30" long iron rods with 2" diameter Lincoln Co. aluminum cap.

Coordinate Table

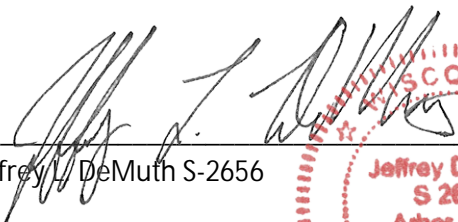
	County Provided	2022 Measurement	Difference
North	248470.654	248470.668	-0.01
East	330683.266	330683.374	-0.11

Observed coordinates match with existing coordinates within reason.

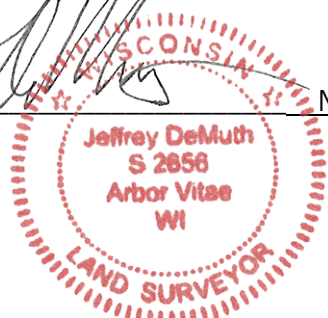
Request Data Log for more information.

Additional Notes:

Monument is in an E-W fence line, and ±15' south of a woods road centerline.


Jeffrey L. DeMuth S-2656

November 15, 2022
Date



43504120020_Mon-N



43504120020_North



43504120020_West



43504120020_South



43504120020_East

