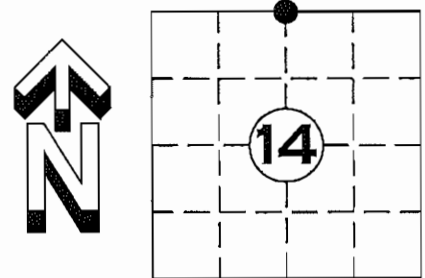


U.S. PUBLIC LAND SURVEY MONUMENT RECORD

NOTE: THIS FORM IS INTENDED AND DESIGNED TO FULFILL ALL REQUIREMENTS OF WISCONSIN ADMINISTRATIVE CODE CHAPTER A-E 7.08 U.S. PUBLIC LAND SURVEY MONUMENT RECORD (3) (a)(b)(c)(d)(e)(f)(g)(h)(i). AN ADDITIONAL SHEET MAY BE ADDED IF NECESSARY TO CONFIRM WITH SAID REQUIREMENTS.

(a) CORNER LOCATION: $N\frac{1}{4}$ CORNER
 SECTION 14, TOWNSHIP 35 NORTH, RANGE 4 EAST
 TOWN OF SOMO, LINCOLN COUNTY
 LINCOLN COUNTY COORDINATES:
 NORTHING: 248510.058
 EASTING: 325457.831



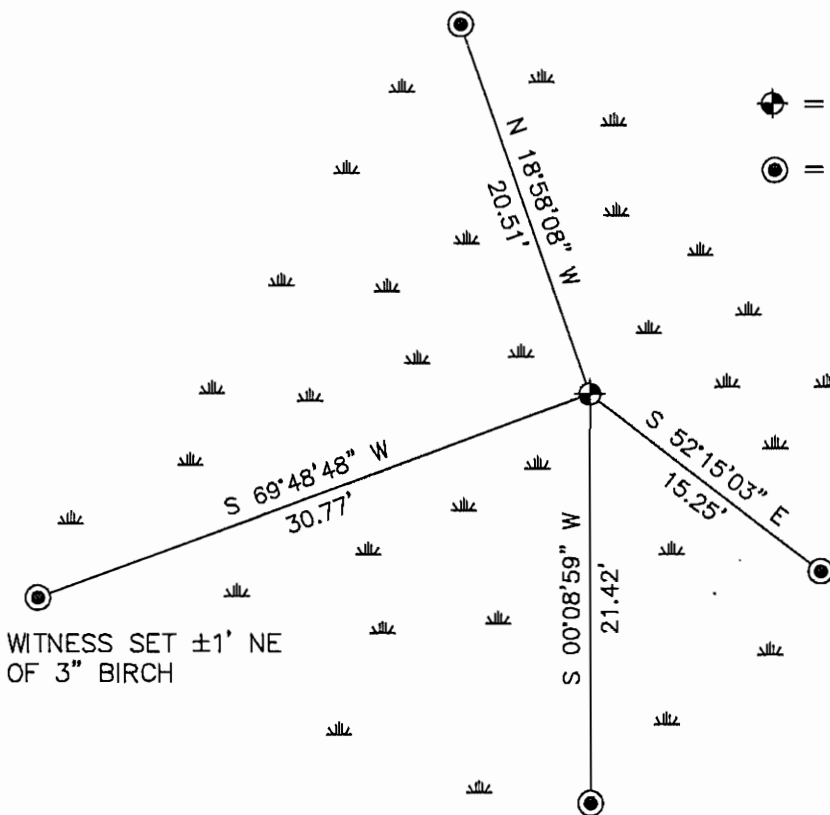
(b) HISTORY OF ORIGINAL CORNER:
 ORIGINAL SURVEYOR: EDWARD D. PALMER APRIL 1865 – MAY 1865
 SPRUCE 6" N 14° E 20lks
 SPRUCE 4" S 17° W 12lks

(f)(g)(h) DESCRIPTION OF MONUMENT FOUND AT THIS CORNER AND IF IT WAS ACCEPTED STATE ALL EVIDENCE (MATERIAL, TESTIMONIAL, OCCUPATIONAL, PLATS, RECORDS, OTHER MONUMENTS) USED AS A BASIS FOR ESTABLISHING LOCATION. IF REESTABLISHED THROUGH LOST CORNER PROPORTIONATE METHODS, INDICATE ALL MONUMENTS, DISTANCES, AND DIRECTIONS USED TO ESTABLISH. INDICATE TYPE OF MONUMENT AND SIGN POST FOUND OR SET.

23 SEPT. 1923; D.S. BURNETT, FOUND A SCRIBED STAKE AND THE STP OF ONE OF THE ORIG. GOV'T. TREES. SPRUCE 6" N 14° E 20lks. ALSO TWO OTHER TREES SCRIBED TO WHICH I TOOK BEARINGS. SPRUCE 7" N 76° W 21 1/2lks, TAM 12" S 56° E 30lks SET MONUMENT.

26 MARCH 2012: FOUND IRON PIPE WITH PLATE ON TOP LYING DOWN IN $\pm 1'$ OF WATER ON LINE WITH THE EXTENSION OF AN OLD DOWN FENCE FROM THE WEST. THE IRON PIPE WITH PLATE ON TOP IS CONSISTENT WITH THOSE SET BY D.S. BURNETT IN 1923. SET 5' LINCOLN COUNTY ALUMINUM DRIVE-ABLE MONUMENT AT BASE OF FOUND IRON PIPE AS BEST EVIDENCE OF CORNER. SET FOUR NEW WITNESS MONUMENT. LEFT BURNETT MONUMENT IN PLACE.

(c)(d)(e) PLAN VIEW OF CORNER WITH TIES TO AT LEAST FOUR WITNESSES. IF IN DISAGREEMENT WITH PREVIOUSLY ESTABLISHED CORNER, SHOW THE DISTANCE BETWEEN THE TWO CORNERS AND ALSO INDICATED THE TIE TO THE DISPUTED CORNER.



- = 5' LINCOLN CO. ALUMINUM DRIVE-ABLE MONUMENT SET
- = 2.7' LINCOLN CO. ALUMINUM DRIVE-ABLE MONUMENT SET

RECEIVED BY LINCOLN COUNTY SURVEYOR THIS 30TH DAY OF March 20 12
Tom Dull
 COUNTY SURVEYOR

I DARREN B. KRZANOWSKI, REGISTERED LAND SURVEYOR NO. 2663, HEREBY CERTIFY THAT THE CORNER LOCATION ON THIS RECORD WAS REFERENCED BY ME OR UNDER MY DIRECTION AND CONTROL AND THAT THIS U.S. PUBLIC LAND SURVEY MONUMENT RECORD IS COMPLETE TO THE BEST OF MY KNOWLEDGE AND BELIEF.

Darren Krzanowski
 DARREN B. KRZANOWSKI RLS 2663
 DATED THIS 27TH DAY OF MARCH, 2012



INDEX NO. T35N R4E 119

