

U.S. PUBLIC LAND SURVEY MONUMENT RECORD

NOTE: This form is intended and designed to fulfill all requirements of Wisconsin Administrative Code, Chapter A-E 7.08 U.S. Public Land Survey Monument Record. An additional sheet may be added if necessary to conform with said requirements.

CORNER LOCATION

Quarter Section Corner common to Sections 10 and 15
Township 35 North, Range 5 East of the 4th P.M.
Town of Somo, Lincoln County, Wisconsin

6	5	4	3	2	1
7	8	9	10	11	12
18	17	16	15	14	13
19	20	21	22	23	24
30	29	28	27	26	25
31	32	33	34	35	36

T35N - R4E

DESCRIPTION OF MONUMENT FOUND AT THIS CORNER AND IF IT WAS ACCEPTED, STATE ALL EVIDENCE (MATERIAL, TESTIMONIAL, OCCUPATIONAL, PLATS, RECORDS, OTHER MONUMENTS) USED AS A BASIS FOR ACCEPTING. IF NOT ACCEPTED OR IF NOTHING WAS FOUND, STATE EVIDENCE USED AS BASIS FOR ESTABLISHING LOCATION. IF RE-ESTABLISHED THROUGH LOST CORNER PROPORTIONATE METHODS, INDICATE ALL MONUMENTS, DISTANCES AND DIRECTIONS USED TO ESTABLISH. INDICATE TYPE OF MONUMENT AND SIGN POST FOUND OR SET.

Sep. 1923, Dec. 1924- D.S. Burnett set this corner by single proportionate measure per the December 1, 1924 sworn testimony of H.H. Stolle, Chairman of the Town of Somo, Lincoln County, WI, who identified the corner location between Sections 10 and 15. The corner is located 1.18 chains east of CTH T, and 1.61 chains south of road to F. Kloth's (East - West road). Although it is not stated in the field notes D.S. Burnett had the reputation of setting a 2.5" iron pipe with 5"x5" steel plates on top and bottom and a steel rod through the middle bent over at each end at corner locations (commonly referred to as a Burnett monument).

May 2001 - Al Schneider reset the this corner by single proportionate measure using a found Burnett monument at the SW corner of Section 10 and a found Berntsen monument at the SE corner of Section 10 established by Lester Schmit in Sept. 1985. Schneider set ties as follows:

- 0.75" iron rod 344°00'00" 53.48', aluminum nail in 12" maple 344°00'00" 41.03'
- 0.75" iron rod 98°00'00" 52.30', aluminum nail in 14" white spruce 98°00'00" 31.21'
- 0.75" iron rod 176°00'00" 60.19', aluminum nail in 3" balsam 176°00'00" 38.89'
- 0.75" iron rod 252°00'00" 43.44', aluminum nail in 4" maple 252°00'00" 28.13'

Dec. 2014 - Chad A. Besaw found Schneider's berntsen monument and ties all in good condition. However, I found and held, per Lincoln County Surveyor, Burnett's monument at the Southeast corner of Section 10 which bears S16°31'30"W 10.61' from Schmit's berntsen monument. I reset a 2.4" x 30" aluminum monument with a 3.25" cap by single proportionate measure to retrace Burnett's notes from 1923 using Burnett's monument at the Southeast corner of Section 10 and Schneider's found Burnett monument at the Southwest corner of Section 10. This corner is approximately 107' (Burnett 106.26') south of the centerline of Pine Tree Lane, and approximately 73' (Burnett 77.88') east of the centerline of CTH T. See Section Summary filed with this USPLS monument record. Witnessed with Schneider's ties as shown below:

PLAN VIEW OF CORNER WITH TIES TO AT LEAST 4 WITNESS MONUMENTS. IF IN DISAGREEMENT WITH PREVIOUSLY ESTABLISHED CORNER, SHOW THE DISTANCES BETWEEN THE TWO CORNERS AND ALSO INDICATE THE TIES TO THE DISPUTED.

Notes:

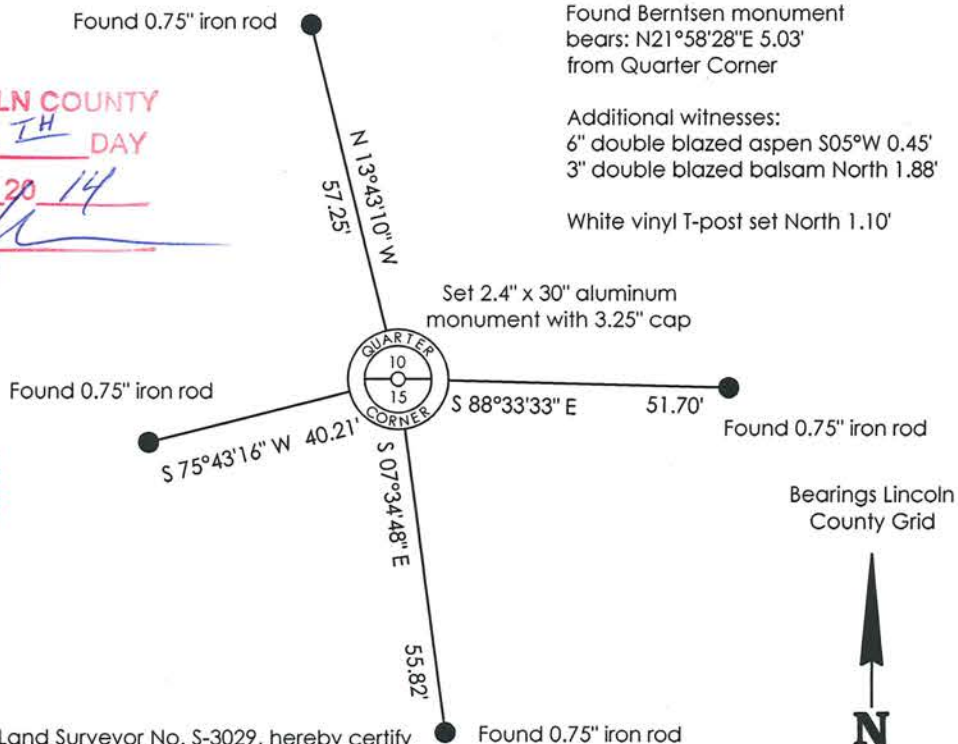
Found Berntsen monument bears: N21°58'28"E 5.03' from Quarter Corner

Additional witnesses:

- 6" double blazed aspen S05°W 0.45'
- 3" double blazed balsam North 1.88'

White vinyl T-post set North 1.10'

RECEIVED BY LINCOLN COUNTY
SURVEYOR THIS 26TH DAY
OF December 20 14
Tony Dall
COUNTY SURVEYOR



I, Chad A. Besaw, Registered Land Surveyor No. S-3029, hereby certify that the corner location on this record was determined by me or under my direction and control and that this U.S. Public Land Survey Monument Record is correct and complete to the best of my knowledge and belief.

Chad A. Besaw 12-26-14
Chad A. Besaw, RLS No. S-3029
STEIGERWALDT LAND SURVEYING, LLC

SCALE: 1" = 30'

I-15

RECORD CODES:
 FB-FIELD BOOK
 L -LARGE MAP
 S -SMALL MAP
 V -VERTICAL FILE
 SD-SECTION DRAWING
 CS-CERTIFIED SURVEY
 P -RECORDED PLAT

6	5	4	3	2	1
7	8	9	10	11	12
18	17	16	15	14	13
19	20	21	22	23	24
30	29	28	27	26	25
31	32	33	34	35	36

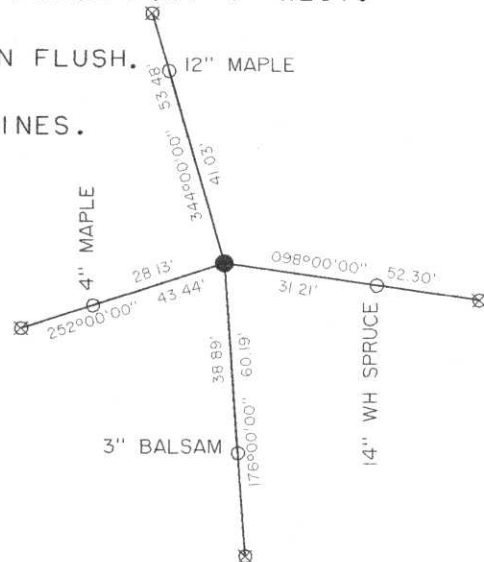
T 35 N, R 4 E

NO _____

U. S. PUBLIC LAND SURVEY MONUMENT RECORD

CHECK IF INFO ON BACK _____

1. THE QUARTER CORNER OF SECTIONS 10 AND 15, T 35 N, R 4 E.
 2. ORIGINAL GOVERNMENT SURVEYOR- EDWARD PALMER, DATE- APRIL 1865
 3. ORIGINAL BEARING TREES - FEET - SUBSEQUENT RECOVERY RECORD
 4. CEDAR 6 N15E 10 LKS - 6.6 - NONE
 5. BIRCH 10 S20E 17 LKS - 11.2 -
 6. LKS - -
 7. LKS - -
 8. ORIGINAL TOPOGRAPHY CALLS - FEET - PRESENT TOPOGRAPHY
 9. 6LK CREEK EAST 17.91 CHS - 1182 - 1080+-
 10. CHS - -
 11. SUBSEQUENT RECORDS IN COUNTY SURVEYOR OFFICE WHICH REFER TO THIS CORNER
 12. D.S. BURNETT FIELD BOOK-PAGE 7 - DATED SEPT 15, 1923.
 - 13.
 14. SUBSEQUENT MONUMENTS OF RECORD -SURVEYOR- DATE- RECORD NO.
 15. SET 1/4 COR (MATERIAL NOT DESCRIBED) - BURNETT- 1923- PAGE 7 OF FB
 - 16.
 17. SUBSEQUENT BT'S OR WM'S - FEET -SURVEYOR- DATE- RECORD NO.
 18. COUNTY TRUNK T - WEST 1.18 CH - 77.9 -BURNETT - 1923- PAGE 7 OF FB
 19. ROAD TO F. KLATKS - NORTH 1.61 CH - 106.3 -BURNETT - 1923- PAGE 7 OF FB
 - 20.
 21. ADJOINING CORNER - MY DISTANCE -RECORD FT -SURVEYOR- DATE- RECORD NO.
 22. SECTION CORNER W - 2554.14 - 2553.21 - BURNETT- 1923- PAGE 7
 23. SECTION CORNER E - 2554.14 - 2553.21 - BURNETT- 1923- PAGE 7
 - 24.
 25. OTHER INFO IN RECORDS- D.S. BURNETT IN 1923 SET THIS CORNER BY SINGLE
 26. PROPORTIONATE MEASURE ON A STRAIGHT LINE BETWEEN SECTION CORNERS E & W,
 27. EVEN THOUGH HIS NOTES CALL FOR A ROAD INTERSECTION 1.18 CHS WEST AND
 28. 1.61 CHS NORTH OF HERE, HE OBVIOUSLY DID NOT CONSIDER THE INTERSECTION TO
 29. BE ADEQUATE EVIDENCE.
 30. EVIDENCE FOUND AT CORNER- ROADS REFERRED TO BY BURNETT.
 31. PERSONS WHO SAW EVIDENCE- AL AND JEFF SCHNEIDER
 32. OTHER REASONS FOR LOCATING CORNER HERE- SET EQUIDISTANT ON A STRAIGHT LINE
 33. BETWEEN SECTION CORNERS EAST AND WEST. SEE DISCLAIMER ON MY MAY 2001 MAP
 34. TO SUBDIVIDE SECTION 10.
 35. PRESENT CORNER MONUMENT- 4" X 36" CAST ALUMINUM BERNSTEN MONUMENT SET.
 36. CAST ALUMINUM CAP STAMPED "S10/S15 1/4 COR T35N R4E." MAGNETS IN CAP AND
 37. IN LOWER BREAK-AWAY SECTIONS. SET IRON FENCE POST 4" WEST.
 38. PRESENT WITNESS MONUMENTS-
 39. 3/4" X 30" SOLID ROUND IRON BARS DRIVEN FLUSH.
 40. GENERAL AREA DESCRIPTION-
 41. ABOUT 100' S AND 75' E OF ROAD CENTERLINES.
 42. LINCOLN CO. COORDS.-97 HARN
 43. N 248440.68
 44. E 320271.39
 45. MAG N = 0 DEGREES AZ
- DRAWN BY: JAS
- = THIS CORNER
 - ⊗ = IRON WITNESS MONUMENT
 - = OTHER REFERENCE - TREES MEASURED TO ALUMINUM NAIL IN SIDE TO COINCIDE WITH CENTER AT ROOT CROWN, AND WITH YELLOW PLASTIC SIGNS FACING CORNER.



I CERTIFY THAT ON THE 17TH DAY OF APRIL, 2001, I PERPETUATED THIS CORNER AS SHOWN, DATED THIS 10 DAY OF MAY 2001.

Al Schneider, LAND SURVEYOR

SEQUENCE NO. N3440-E0332

2-15