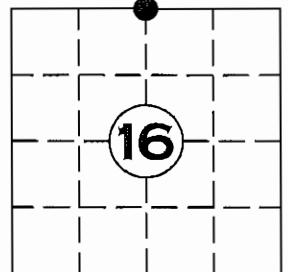


U.S. PUBLIC LAND SURVEY MONUMENT RECORD

NOTE: THIS FORM IS INTENDED AND DESIGNED TO FULFILL ALL REQUIREMENTS OF WISCONSIN ADMINISTRATIVE CODE CHAPTER A-E 7.08 U.S. PUBLIC LAND SURVEY MONUMENT RECORD (3) (a)(b)(c)(d)(e)(f)(g)(h)(i). AN ADDITIONAL SHEET MAY BE ADDED IF NECESSARY TO CONFIRM WITH SAID REQUIREMENTS.

(a) CORNER LOCATION: $N\frac{1}{4}$ CORNER
 SECTION 16, TOWNSHIP 35 NORTH, RANGE 4 EAST
 TOWN OF SOMO, LINCOLN COUNTY
 LINCOLN COUNTY COORDINATES:
 2in. IRON PIPE W/PLATE
 NORTHING: 248206.468
 EASTING: 315098.127



2in. IRON PIPE W/BRASS CAP
 NORTHING: 248219.086
 EASTING: 315098.658

(b) HISTORY OF ORIGINAL CORNER:
 ORIGINAL SURVEYOR: EDWARD D. PALMER, APRIL 1865 – MAY 1865
 SPRUCE 4 N 54° E 16lks
 SPRUCE 3 S 15° W 10lks

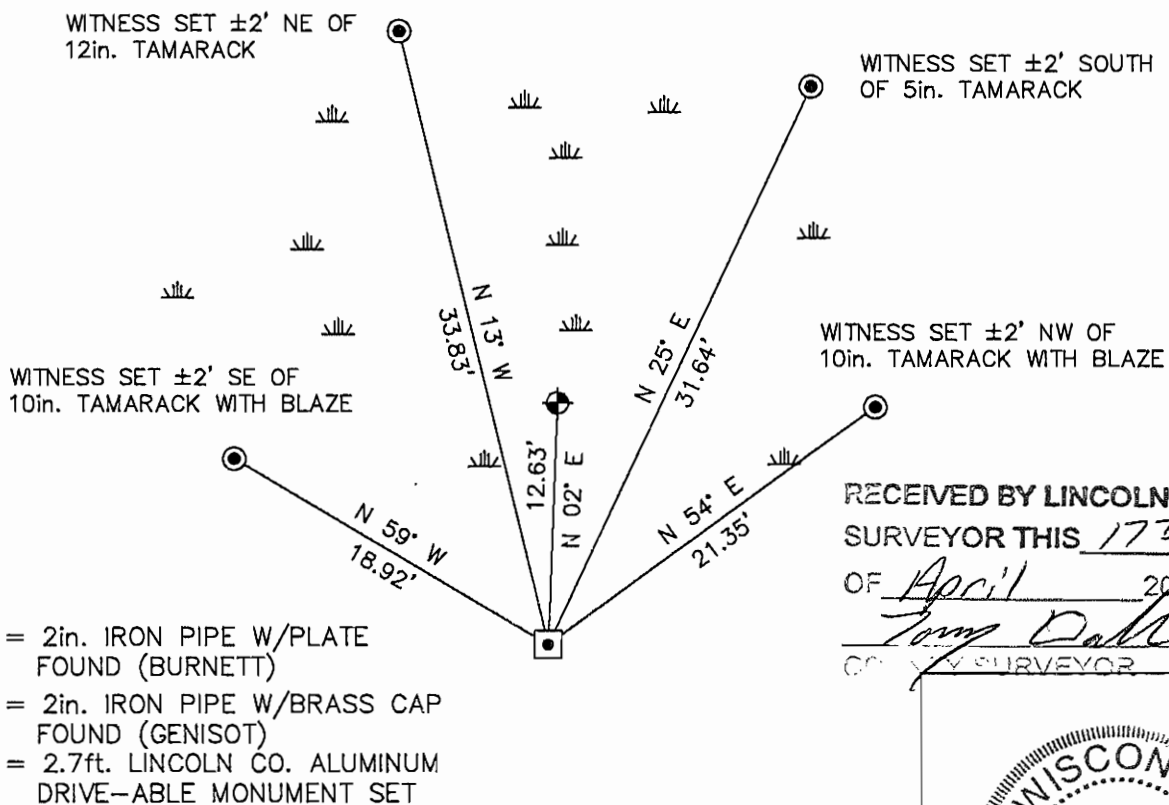
(f)(g)(h) DESCRIPTION OF MONUMENT FOUND AT THIS CORNER AND IF IT WAS ACCEPTED STATE ALL EVIDENCE (MATERIAL, TESTIMONIAL, OCCUPATIONAL, PLATS, RECORDS, OTHER MONUMENTS) USED AS A BASIS FOR ESTABLISHING LOCATION. IF REESTABLISHED THROUGH LOST CORNER PROPORTIONATE METHODS, INDICATE ALL MONUMENTS, DISTANCES, AND DIRECTIONS USED TO ESTABLISH. INDICATE TYPE OF MONUMENT AND SIGN POST FOUND OR SET.

22 SEPT. 1923: D.S. BURNETT FOUND MARKED STAKE AND SPRUCE STP. 7" N 84° E 16lks THAT CHECKED WITH FIELD NOTES ALTHOUGH NO MARKS WERE VISIBLE AS THE TREE HAD BEEN CUT VERY LOW. SET MONUMENT AND MARKED NEW BEARINGS. TAM. 12" N 14° W 96lks, SPRUCE 4" S 76° W 21 1/2lks, TAM. 5" S 27° E 22 1/2lks.

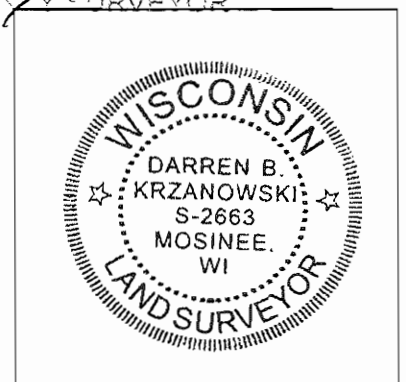
8 FEB 1979 RLS 1383, SURVEY FOR THE LINCOLN COUNTY FORESTRY DEPARTMENT CALL; SET BRASS CAPPED I.P. BT'S 7" TAMARACK S 81° E 19.50, 7" TAMARACK S 81° W 17.85', G&W POST 3' SE. (LINES RUN BY WILLIAM WENGLER 17 JAN. 1979

13 APRIL 2012; FOUND 2in. IRON PIPE WITH PLATE TYPICAL OF THOSE SET SET BY D.S. BURNETT AND THE IRON PIPE WITH BRASS CAP, STAMPED LIN. CO. SURVEY N 1/4 SEC 16, T35N R4E W.W. IN TAMARACK SWAMP WITH WOOD FENCE POST ±3' TO THE SE. CALLED FOR IN THE GENISOT AND ASSOCIATES SURVEY (M182A). ACCEPTED D.S. BURNETT MONUMENT AND SET FOUR NEW WITNESS MONUMENTS

(c)(d)(e) PLAN VIEW OF CORNER WITH TIES TO AT LEAST FOUR WITNESSES. IF IN DISAGREEMENT WITH PREVIOUSLY ESTABLISHED CORNER, SHOW THE DISTANCE BETWEEN THE TWO CORNERS AND ALSO INDICATED THE TIE TO THE DISPUTED CORNER.



RECEIVED BY LINCOLN COUNTY
 SURVEYOR THIS 17TH DAY
 OF April 2012
Tom Dahl
 COUNTY SURVEYOR



INDEX NO. T35N R4E 111

I DARREN B. KRZANOWSKI, REGISTERED LAND SURVEYOR NO. 2663, HEREBY CERTIFY THAT THE CORNER LOCATION ON THIS RECORD WAS REFERENCED BY ME OR UNDER MY DIRECTION AND CONTROL AND THAT THIS U.S. PUBLIC LAND SURVEY MONUMENT RECORD IS COMPLETE TO THE BEST OF MY KNOWLEDGE AND BELIEF.

Darren B. Krzanowski
 DARREN B. KRZANOWSKI RLS 2663
 DATED THIS 17TH DAY OF APRIL 2012





PLEASE
DO NOT
STURD
LARRY









SURVIVE
LIVE







