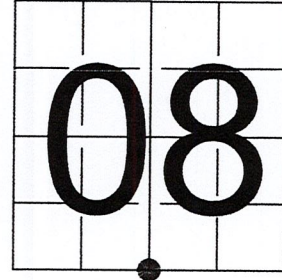


U S PUBLIC LAND SURVEY MONUMENT RECORD

NOTE: This form is intended and designed to fulfill all requirements of Wisconsin Administrative Code, Chapter A-E 7.08 U.S. Public Land Survey Monument Record (3) (a-i)

A-E 7.08(3)(a) Identity of corner:
SOUTH 1/4 CORNER SECTION 08,
TOWNSHIP 35 NORTH,
RANGE 04 EAST OF THE 4TH PM,
TOWN OF SOMO,
COUNTY OF LINCOLN

WISCORS - LINCOLN COUNTY
N: 247,983.333 USft (247,983.414)
E: 310,172.891 USft (310,172.730)
Datum: NAD83 (2011)
GNSS Method RTN - Direct
GNSS Control WISCORS VRS



The coordinate value shown has been verified by the average of two or more GPS observations at a markedly different time. Coordinates shown in parenthesis are provided by Lincoln County.

A-E 7.08(3)(b)

Original Surveyor: Edward D. Palmer

Date of Original Survey Commenced: April 22, 1865
Completed: May 5, 1865

Original Accessories:
Birch 5 N 30° E 12 Links
Birch 9 S 45° W 26 Links

October 3, 1923 - Surveyor D.S. Burnett - set monument by local testimony and "woodsman recognition". Burnett made 2 new bearing trees: Hemlock Stp 14" N.40°W. 24 lks, Tall Hemlock Stp 40" S.82°E. 50 lks, per notes.

Burnett is presumed to have set iron pipe monuments with steel plate attached by iron rod.

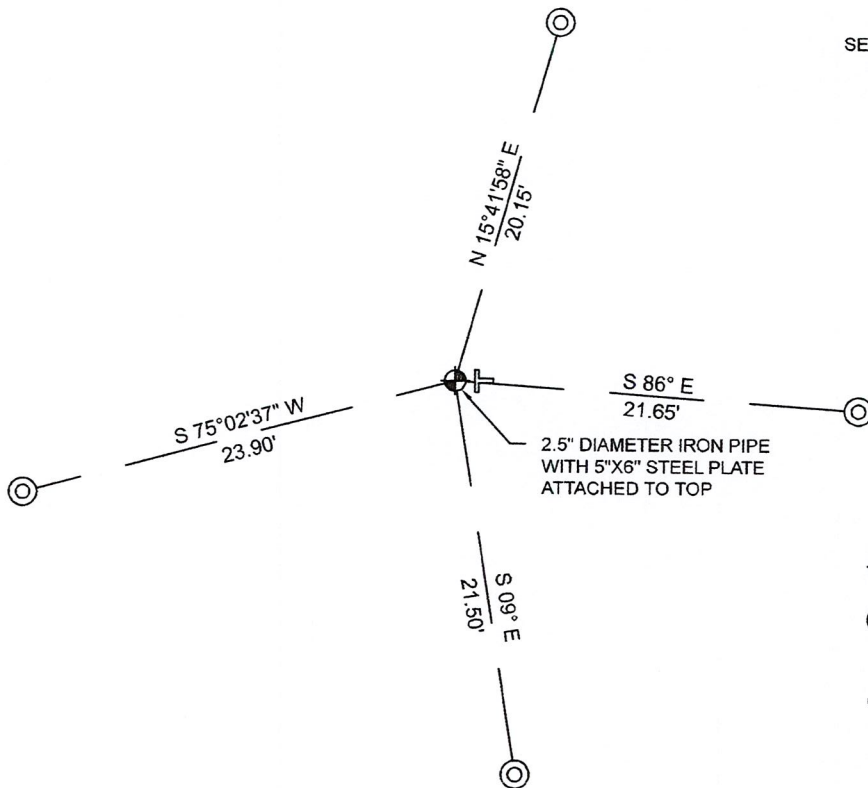
November 20, 1978 - Surveyor 1383 - William G. Immich - Genisot and Associates - indicate this position as "SET IRON PIPE" on Lincoln County map M131A.

March 22, 2013 - Surveyor 1192 - Lester J. Schmidt - indicates this position as "2 1/2" iron pipe with 5"x6" iron plate secured to the top by an iron rod" on Lincoln County map M625B.

March 28, 2012 - Surveyor 2663 - Darren B. Krzanowski - indicates this position as "N: 247983.414 E: 310172.730, corner location per county survey records" on Lincoln County Section Summary - Section 8, Township 35 North, Range 4 East, Town of Somo.

October 25, 2022 - While performing the 2022 Lincoln County PLSS Corner Remonumentation and GPS Services project, I found a 2.5" diameter iron pipe, with a 5" x 6" steel plate attached to the top by a bent .5" diameter iron rod. The monument is near the computed position provided by Lincoln County, and bent north at grade. I measured the pipe at the bend. I established 4 new reference monuments as shown below.

A-E 7.08(3)(c)(d) Plan view of corner with references to at least 4 witness monuments.

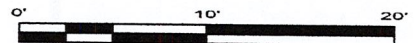


BEARINGS LISTED TO THE NEAREST SECOND ARE REFERENCED TO WISCONSIN COUNTY COORDINATE REFERENCE SYSTEM - LINCOLN COUNTY ZONE. ALL OTHER BEARINGS ARE MAGNETIC

RECEIVED BY LINCOLN COUNTY SURVEYOR THIS 27TH DAY OF December 20 22
Jeffrey DeMuth
COUNTY SURVEYOR

LEGEND

- 2.5" diameter iron Pipe, found
- 7/8" diameter X 30" long - iron rod with 2" diameter aluminum cap, set
- Vinyl T-post, set ±1.5 feet east of corner



A-E 7.08(3)(e) 1865 Surveyor set a post, 1923 Surveyor set a monument, 2013 Surveyor had a 2 1/2" iron pipe with a 5" x 6" steel plate, 2012 Surveyor had coordinates. I found a 2.5" diameter iron pipe, with a 5" x 6" steel plate attached to the top by a bent .5" diameter iron rod.

A-E 7.08(3)(f) I accept this monument as a FOUND PERPETUATED LOCATION of the corner.

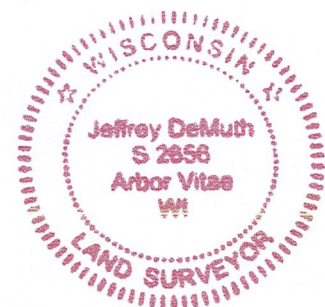
A-E 7.08(3)(g)(h) This corner was not determined through lost-corner-proportionate methods.

A-E 7.08(3)(i) I, Jeffrey L. DeMuth, Professional Land Surveyor No. S-2656, hereby certify that the corner location on this record was determined by the Lincoln County Surveyor, and the monuments found or set as shown hereon were measured by me or under my direction and control, and that this U.S. Public Land Survey Monument Record is correct and complete to the best of my knowledge, and belief.

SIGNATURE

December 14, 2022

DATE



I-7

REPORT

2022-Lincoln County PLSS Corner Remonumentation and GPS Services

Wisconsin Corner Point Identification Number: 43504080020

Surveyor: Jeffrey L. DeMuth – S2656

Corner monument: Found 2.5" diameter iron pipe with a 5" x 6" steel plate attached by a bent .5" diameter iron rod through center of pipe.

Field Book: Cardinal North – Lincoln Co. Remon. – 2022-00

Page: 58

Horizontal Datum: WisCRS – Lincoln County Zone – NAD83(2011)

Date / time of initial measurement:

October 25, 2022 - Start 12:32:56 CDT – End 12:45:46 CDT

Reference monuments:

4 – Set - 7/8" diameter X 30" long iron rods with 2" diameter Lincoln Co. aluminum cap.

Coordinate Table

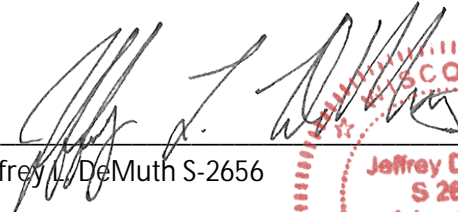
	County Provided	2022 Measurement	Difference
North	247983.414	247983.333	0.08
East	310172.730	310172.891	-0.16

Observed coordinates match with existing coordinates within reason.

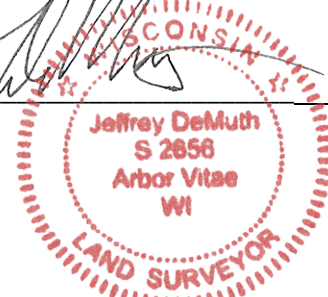
Request Data Log for more information.

Additional Notes:

Found monument bent north at grade, I did not attempt to straighten monument, measured to bend point.


Jeffrey L. DeMuth S-2656

November 15, 2022
Date



43504080020_Mon-N



43504080020_North



43504080020_West



43504080020_South



43504080020_East

