

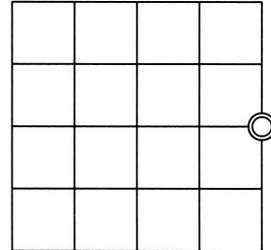
U.S. PUBLIC LAND SURVEY MONUMENT RECORD

Note: This form is intended an designed to fulfill all requirements of Wisconsin Administrative Code. Chapter A-E 7.08 U.S. Public Land Survey Monument Record (3)(a)(b)(c)(d)(e)(f)(g)(h)(i). An additional sheet may be added to if necessary to conform with said requirements.

(a) Corner Location: Township 35 North
Range 4 East

Town of Somo

Lincoln County, Wisconsin



Section 6

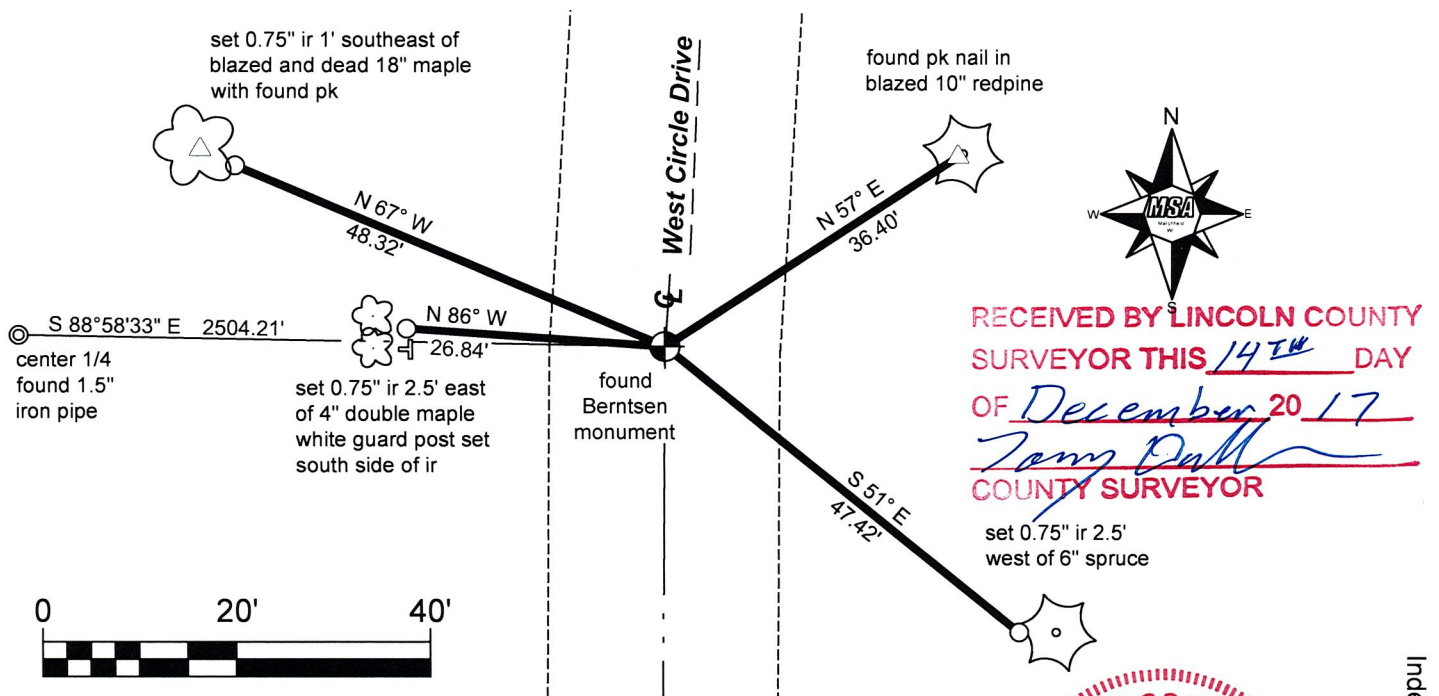
(b)(f)(g)(h) Description of monument found at this corner and if it was accepted, state all evidence (material, testimonial, occupational, plats, records, other monuments) used as a basis for accepting. If not accepted or if nothing was found, state evidence used as basis for establishing location. If reestablishment through lost corner proportionate methods, indicate all monuments, distances and directions used to establish. Indicate type of monument found or set and sign post.

April 1865-May 1865 Palmer, Edward D. Running south corrected at 44.51 chains, set post for 1/4 Sec. Cor. Hemlock 6 N71°W 9 lks, Birch 14 S60°E 10 lks.

July 2009 Lincoln County Surveyor found Berntsen monument down 8" in centerline of West Circle Drive. found trees blazed and painted, no tie sheet on file.

October 2017 Chad A. Besaw found Berntsen monument down 8" in gravel centerline of West Circle Drive. Made references as shown below:

(c)(d)(e) Plan view of corner with ties to at least 4 witness monuments. If in disagreement with previously established corner, show the distances between the two corners and also indicate the ties to the disputed corner.



(i) I, Chad A. Besaw, Registered Land Surveyor #S-3029, hereby certify that the corner location on this record was determined by me or under my direction and control and that this U.S. Public Land Survey Monument Record is correct and complete to the best of my knowledge and belief.

Chad A. Besaw
Signature

12/7/2017
Date



Index No. C-5