

CERTIFIED LAND CORNER RESTORATION

Index No. C-9

State of Wisconsin }  
County of Lincoln } ss.

I Robert H. Winat, do hereby certify that on the 20th day of December, 19 72, I found evidence of the West 1/4 corner of Section 4 Township 35, North, Range 4 East, Fourth, Principal Meridian, as described hereon; and that from this evidence I established a new monument and accessories as described hereon to perpetuate the ~~original~~ location of this corner.

Resident witnesses:

.....  
.....  
.....

History of original corner establishment:

Edw. Palmer  
May 2, 1865  
Wood post  
14" Birch N78°W, 18 lk  
26" White Pine S64°E, 10 lk

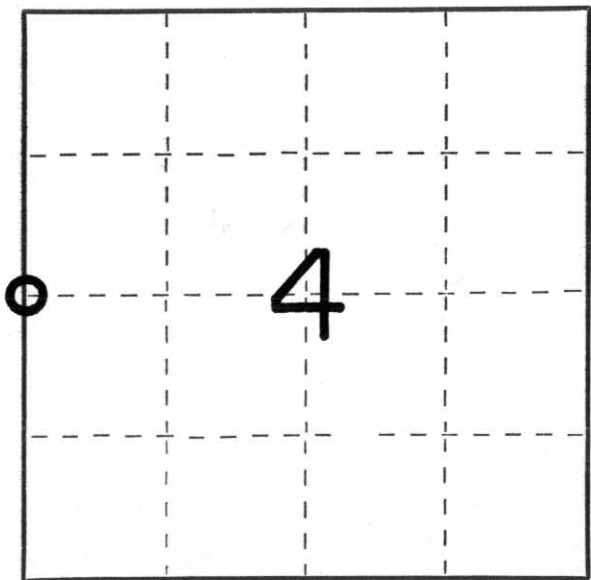
Description of corner evidence found:

1 1/4" iron pipe at D.S. Burnett's re-established location of 1923, since remains of the 10" Birch S52°E, 42.4' (64 1/2 lks) were found as a flush cut rotten stump. This location is 333.1 feet further south from the section corner on the Town line than Burnett indicates. I believe he made a 5 chain blunder. However, I believe a competent court would hold that this corner controls property lines since all occupation conforms to it and it has been undisputed by anyone of record for over 50 years.

Description of monument and accessories I established to perpetuate the ~~original~~ location of this corner.

Lincoln Co. Berntsen monument 36"-with 1 1/4" iron pipe adjacent in centerline of roads.

Ties  
6" Cedar N58°W, 73.36'  
5" White Birch S62°W, 73.80'  
10" Hemlock S57°E, 67.53'  
10" Birch stump S52°E, 42.4'



○ = Corner monument restored.

Dated at Minocqua, Wis., this 19th day of November, 1972.

Signature Robert H. Winat Title Land Surveyor Registration No. S-1040  
(County Surveyor, Registered Land Surveyor, or other duly authorized official)

Office of Register of Deeds, County of....., I hereby certify that the within instrument was filed in this office for record on the..... day of....., 19..... at..... o'clock..... M..

.....  
(Register of Deeds)  
By..... Deputy

# U.S. PUBLIC LAND SURVEY MONUMENT RECORD FOR LINCOLN COUNTY, WISCONSIN

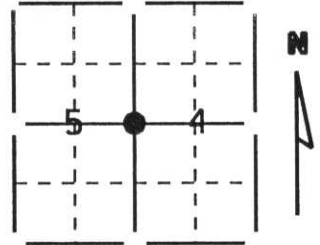
Note: This form is intended and designed to fulfill all requirements of Wisconsin Administrative Code, Chapter A-E 5.02, U.S. Public Land Survey Monument Record (3) (a) (b) (c) (d) (e) (f) (g) (h) (i). Use additional sheet if necessary.

(a) The  section,  one quarter corner common to sections 4 & 5,

Township(s) 35 N, Range(s) 4 E

State plane coordinates: N \_\_\_\_\_  
S \_\_\_\_\_

Town/City/Village Somo  
County Lincoln

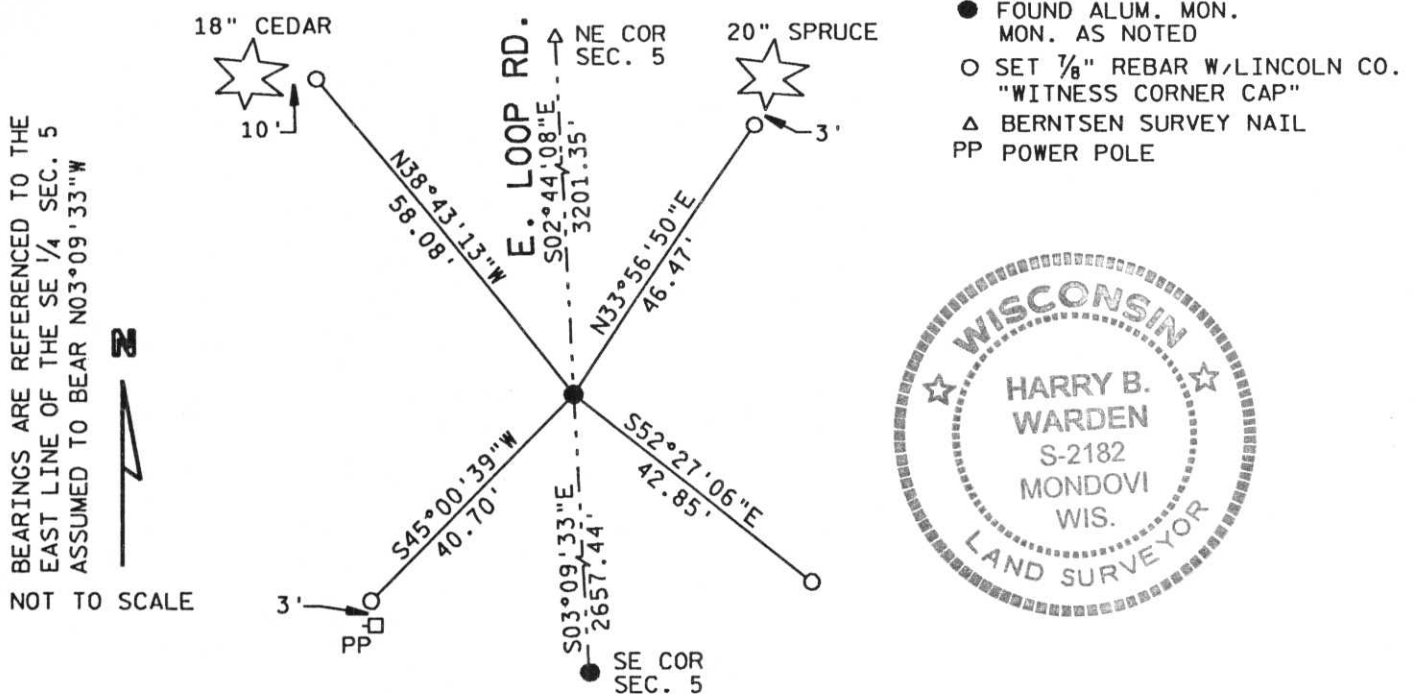


(b) (f) (g) (h) Description of monument found at this corner and if it was accepted, state all evidence (testimonial, occupational, plats, records, other monuments) used as a basis for accepting. If not accepted or nothing was found, state evidence used as a basis for establishing location and what was set. If reestablished through lost corner proportionate methods, indicate all monuments, distances and directions used.

Found Aluminum Monument approx. 3" below grade.  
All existing ties destroyed or grown over.

RECEIVED AT LINCOLN COUNTY  
COURTHOUSE THIS 19 DAY  
OF DEC 1995  
Pat Riehl  
TAX DESCRIPTION OFFICE

(c) (d) (e) Plan view of corner with ties to a least 4 witness monuments. If in disagreement with previously established corner, show the distances between the two corners and also indicated ties to disputed corner.



(i) I certify that the corner location on this record was determined by me or under my direction and control and that this U.S. Public Land Survey Monument Record is correct and complete to the best of my knowledge and belief.

Harry B. Warden  
Signature

December 19, 1995  
Date

Filed for record in Lincoln County Surveyor's Office on \_\_\_\_\_ Date

INDEX # C-9