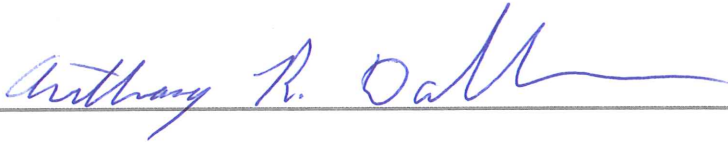


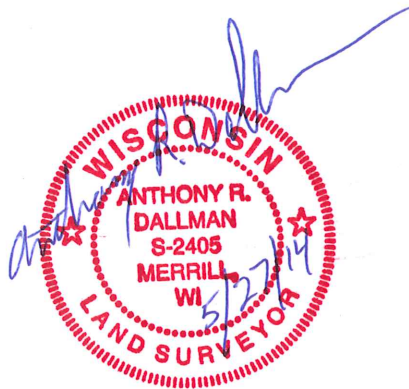
## Attachment to Tie Sheet E-9 T35N, R4E

I visited this corner on June 06, 2011 and found that the 2" x 2" x 18" long Iron Bar was tipped, leaning to the Southwest. The Berntsen Aluminum Monument 3.06' westerly was found broken off, 2" below the road surface. I reset the 2" x 2" x 18" long Iron Bar at the corner location per existing Tie Sheet, now 6" below the road surface.



Anthony R. Dallman

Lincoln County Surveyor



# U.S. PUBLIC LAND SURVEY MONUMENT RECORD FOR LINCOLN COUNTY, WISCONSIN

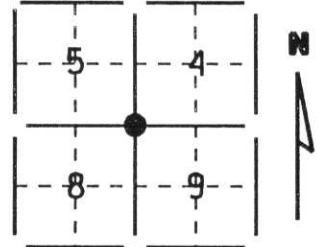
Note: This form is intended and designed to fulfill all requirements of Wisconsin Administrative Code, Chapter A-E 5.02, U.S. Public Land Survey Monument Record (3) (a) (b) (c) (d) (e) (f) (g) (h) (i). Use additional sheet if necessary.

(a) The  section,  one quarter corner common to sections 4, 5, 8 & 9,

Township(s) 35 N, Range(s) 4 E

State plane coordinates: N \_\_\_\_\_  
S \_\_\_\_\_

Town/City/Village Somo  
County Lincoln

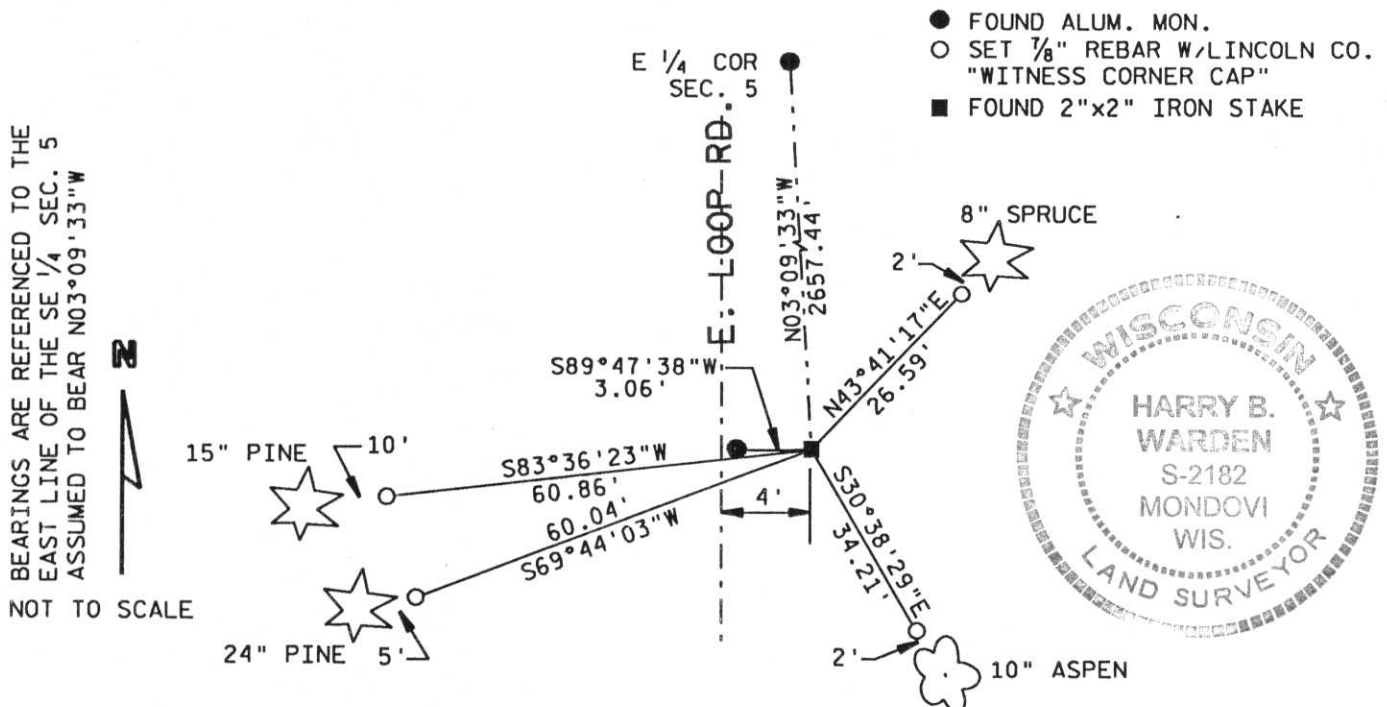


(b) (f) (g) (h) Description of monument found at this corner and if it was accepted, state all evidence (testimonial, occupational, plats, records, other monuments) used as a basis for accepting. If not accepted or nothing was found, state evidence used as a basis for establishing location and what was set. If reestablished through lost corner proportionate methods, indicate all monuments, distances and directions used.

We found an aluminum monument set by R.H. Winat in 1974, disturbed and leaning over. We also found the 2"x2" iron stake called for by D.S. Burnett in 1923, 3' east of monument. I held Burnett's monument as the corner.

RECEIVED AT LINCOLN COUNTY  
COURTHOUSE THIS 19 DAY  
OF Dec 1995  
*Pat Duilio*  
TAX DESCRIPTION OFFICE

(c) (d) (e) Plan view of corner with ties to a least 4 witness monuments. If in disagreement with previously established corner, show the distances between the two corners and also indicated ties to disputed corner.



(i) I certify that the corner location on this record was determined by me or under my direction and control and that this U.S. Public Land Survey Monument Record is correct and complete to the best of my knowledge and belief.

*Harry B Warden*  
Signature

December 19, 1995  
Date

Filed for record in Lincoln County Surveyor's Office on \_\_\_\_\_ Date

INDEX # E-9

CERTIFIED LAND CORNER RESTORATION

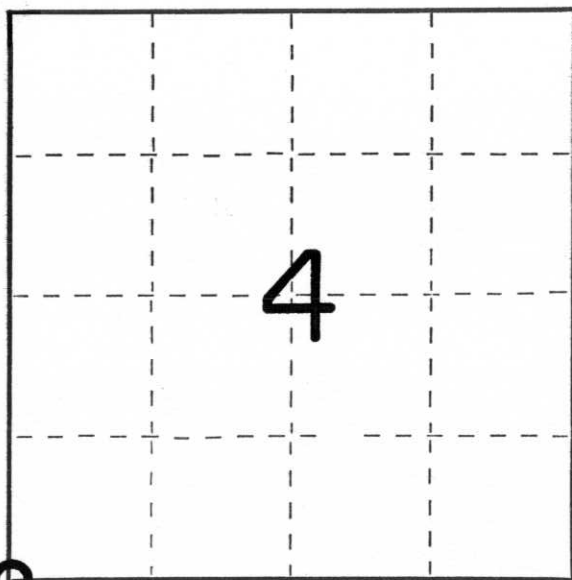
Index No. E-9

State of Wisconsin }  
County of Lincoln } ss.

I, Robert H. Winat, do hereby certify that on the 20th day of December, 19 72, I found evidence of the Southwest corner of Section 4 Township 35, North, Range 4 East, Fourth, Principal Meridian, as described hereon; and that from this evidence I established a new monument and accessories as described hereon to perpetuate the original location of this corner.

Resident witnesses:

Fred Loehmer



○ = Corner monument restored.

History of original corner establishment:

Edw. Palmer  
May 2, 1865  
30" White Pine N27°W, 20 lks.  
26" White Pine N20°E, 9 lks.  
28" White Pine S46°E, 18 lks.  
7" Birch S39°W, 60 lks.

Description of corner evidence found:

This corner was re-established by using the remains of D.S. Burnett's bearing trees of 1923. This location checks with the very old fence to the west and the bend in the road.

Burnett states he found 2" x 2" x 18" iron stake, but that the original bearing trees were "blown out".

Description of monument and accessories I established to perpetuate the original location of this corner.

Lincoln Co. Berntsen Monument 36" in east wheel track

Ties:

P.K. nail w/disc in-  
8" Balsam S4°W, 37.72'  
6" White Birch S37°E, 39.49'  
6" Balsam N60°W, 29.20'  
4" Spruce N47°E, 29.63'

Remains of D.S. Burnett's bearing trees- 18" & 20" Twin pine stump S18°E, 63½ lks.  
18" Pine stump N54°W, 39 lks.

Dated at Missisquoi, Wis., this 19th day of November, 19 72.

Signature Robert H. Winat Title Land Surveyor Registration No. S-1040  
(County Surveyor, Registered Land Surveyor, or other duly authorized official)

Office of Register of Deeds, County of \_\_\_\_\_, I hereby certify that the within instrument was filed in this office for record on the \_\_\_\_\_ day of \_\_\_\_\_, 19 \_\_\_\_\_ at \_\_\_\_\_ o'clock \_\_\_\_\_ M.

\_\_\_\_\_  
(Register of Deeds)

By \_\_\_\_\_ Deputy