

# U.S. PUBLIC LAND SURVEY MONUMENT RECORD

NOTE: This form is intended and designed to fulfill all requirements of Wisconsin Administrative Code, Chapter A-E 7.08 U.S. Public Land Survey Monument Record. An additional sheet may be added if necessary to conform with said requirements.

## CORNER LOCATION

Section Corner common to Sections 3, 4, 9 and 10  
 Township 35 North, Range 5 East of the 4th P.M.  
 Town of Somo, Lincoln County, Wisconsin

6	5	4	3	2	1
7	8	9	10	11	12
18	17	16	15	14	13
19	20	21	22	23	24
30	29	28	27	26	25
31	32	33	34	35	36

T35N - R4E

## HISTORY OF ORIGINAL CORNER ESTABLISHMENT

ORIGINAL SURVEYOR: Edward D. Palmer  
 DATE OF SURVEY: Commenced April 1865 Finished May 1865  
 ORIGINAL ACCESSORIES: "Set post for corner to sections 3, 4, 9 and 10"  
 Birch 16 N70°W 9 links  
 Birch 14 N20°E 8 links  
 Birch 12 S50°E 27 links  
 Fir 6 S65°W 31 links

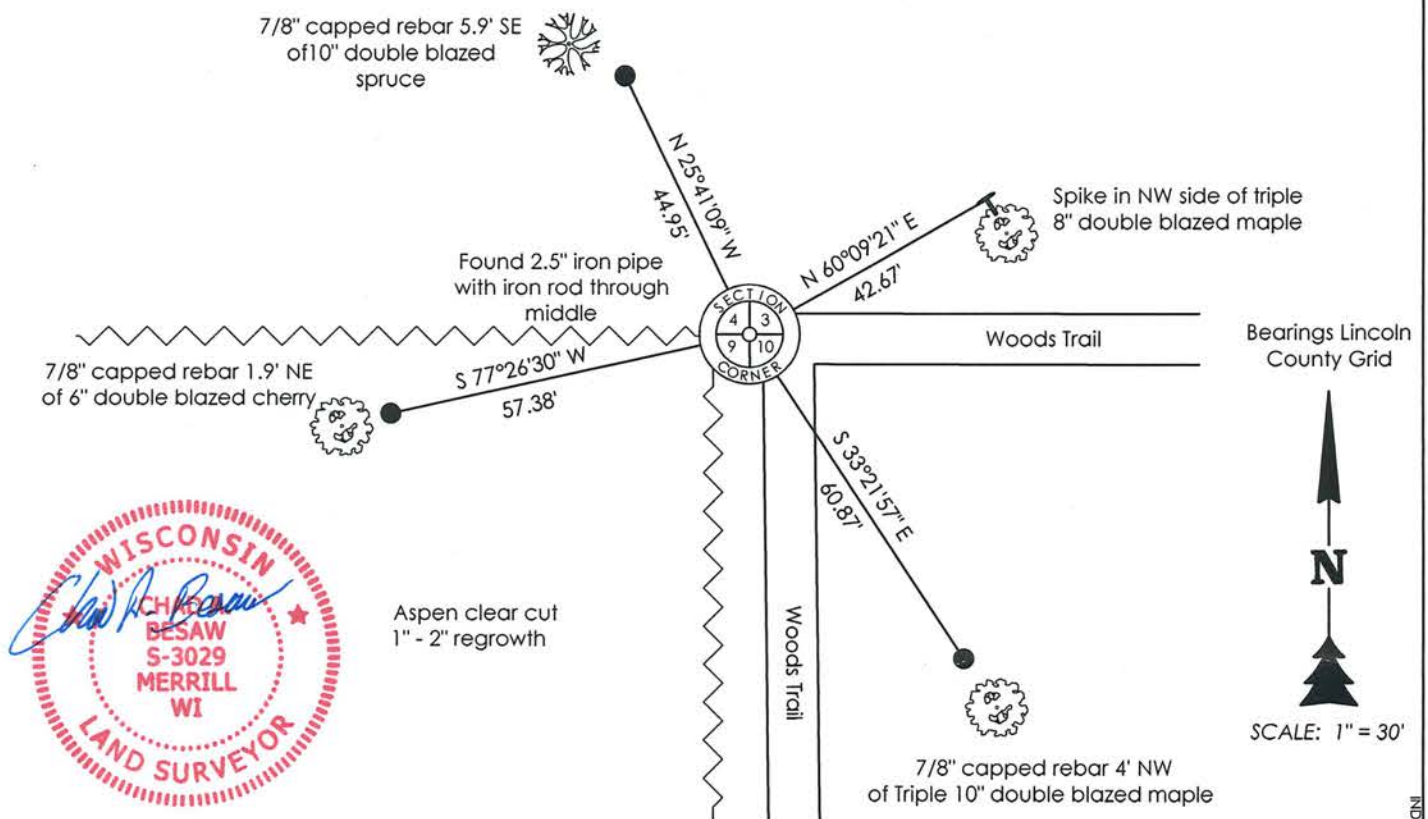
DESCRIPTION OF MONUMENT FOUND AT THIS CORNER AND IF IT WAS ACCEPTED, STATE ALL EVIDENCE (MATERIAL, TESTIMONIAL, OCCUPATIONAL, PLATS, RECORDS, OTHER MONUMENTS) USED AS A BASIS FOR ACCEPTING. IF NOT ACCEPTED OR IF NOTHING WAS FOUND, STATE EVIDENCE USED AS BASIS FOR ESTABLISHING LOCATION. IF RE-ESTABLISHED THROUGH LOST CORNER PROPORTIONATE METHODS, INDICATE ALL MONUMENTS, DISTANCES AND DIRECTIONS USED TO ESTABLISH. INDICATE TYPE OF MONUMENT AND SIGN POST FOUND OR SET.

1923 - D.S. Burnett identified corner by stake and original bearing trees: birch 14 N20°E 8 lks, birch 12 S50°E 27 lks. Created two new bearing trees: H. maple 7" N65°W 39 1/2 lks, H. maple 8" S32°W 42 lks. Although it is not stated in the field notes D.S. Burnett had the reputation of setting a 2.5" iron pipe with 5"x5" steel plates on top and bottom and a steel rod through the middle bent over at each end at corner locations (commonly referred to as a Burnett monument).

Nov. 1974 - Robert Winat found "A 2" iron pipe with 5" square plate on top". Witnessed by: PK with disc 5" white birch S43°E 50.65', PK with disc 6" balsam S32°W 39.37'.

Dec. 2014 - Chad A. Besaw found Burnett's 2.5" iron pipe missing the 5" square plate. I set a white vinyl T-post North 0.5'. See Section Summary filed with this USPLS monument record. Witnessed as shown below:

PLAN VIEW OF CORNER WITH TIES TO AT LEAST 4 WITNESS MONUMENTS. IF IN DISAGREEMENT WITH PREVIOUSLY ESTABLISHED CORNER, SHOW THE DISTANCES BETWEEN THE TWO CORNERS AND ALSO INDICATE THE TIES TO THE DISPUTED.



I, Chad A. Besaw, Registered Land Surveyor No. S-3029, hereby certify that the corner location on this record was determined by me or under my direction and control and that this U.S. Public Land Survey Monument Record is correct and complete to the best of my knowledge and belief.

*Chad A. Besaw* 12-26-14  
 Chad A. Besaw, RLS No. S-3029  
 STEIGERWALDT LAND SURVEYING, LLC

RECEIVED BY LINCOLN COUNTY  
 SURVEYOR THIS 26<sup>th</sup> DAY  
 OF December 20 14  
*Tony Dahl*  
 COUNTY SURVEYOR

INDEX NO.

E-13

CERTIFIED LAND CORNER RESTORATION

Index No. E-13

State of Wisconsin }  
County of Lincoln } ss.

I Robert H. Winat, do hereby certify that on the 15 day of December, 1972, I found evidence of the Southeast corner of Section 4 Township 35, North, Range 4 East, Fourth, Principal Meridian, as described hereon; and that from this evidence I established a new monument and accessories as described hereon to perpetuate the original location of this corner.

Resident witnesses:

.....  
.....  
.....

History of original corner establishment:

Edward D. Palmer  
April 28, 1865  
Wood Post  
16" White Birch N70°W, 9 lks  
14" White Birch N20°E, 8 lk  
12" White Birch S50°E, 27 lk  
6" Fir S65°W, 31 lk

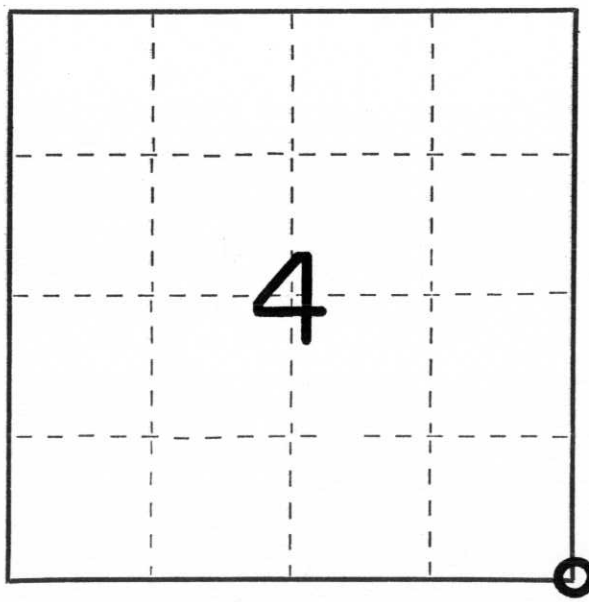
Description of corner evidence found:

2" iron pipe with 5" square plat (Burnett 1923) at fence intersection north and west

Remains of original Birch N20°E, 5.3'  
Remains of D.S. Burnett's Maple BT's at N65°W, 26.1' and S32°W, 27.7'

Description of ~~monument and~~ accessories I established to perpetuate the original location of this corner.

PK w/disc ( 5" White Birch S43°E, 50.65'  
" in ( 6" Balsam S32°W, 39.37'



○ = Corner monument restored.

Dated at Minocqua, Wis., this 19th day of November, 1974.

Signature Robert H. Winat Title Land Surveyor Registration No. S-1040  
(County Surveyor, Registered Land Surveyor, or other duly authorized official)

Office of Register of Deeds, County of....., I hereby certify that the within instrument was filed in this office for record on the..... day of....., 19..... at..... o'clock..... M..

.....  
(Register of Deeds)

By..... Deputy