

U.S. PUBLIC LAND SURVEY MONUMENT RECORD

NOTE: This form is intended and designed to fulfill all requirements of Wisconsin Administrative Code, Chapter A-E 7.08 U.S. Public Land Survey Monument Record. An additional sheet may be added if necessary to conform with said requirements.

CORNER LOCATION

Section Corner common to Sections 2, 3, 10 and 11
 Township 35 North, Range 5 East of the 4th P.M.
 Town of Somo, Lincoln County, Wisconsin

6	5	4	3	2	1
7	8	9	10	11	12
18	17	16	15	14	13
19	20	21	22	23	24
30	29	28	27	26	25
31	32	33	34	35	36

T35N - R4E

DESCRIPTION OF MONUMENT FOUND AT THIS CORNER AND IF IT WAS ACCEPTED, STATE ALL EVIDENCE (MATERIAL, TESTIMONIAL, OCCUPATIONAL, PLATS, RECORDS, OTHER MONUMENTS) USED AS A BASIS FOR ACCEPTING. IF NOT ACCEPTED OR IF NOTHING WAS FOUND, STATE EVIDENCE USED AS BASIS FOR ESTABLISHING LOCATION. IF RE-ESTABLISHED THROUGH LOST CORNER PROPORTIONATE METHODS, INDICATE ALL MONUMENTS, DISTANCES AND DIRECTIONS USED TO ESTABLISH. INDICATE TYPE OF MONUMENT AND SIGN POST FOUND OR SET.

Sep. 1923 - D.S. Burnett ran the north line of Section 10.

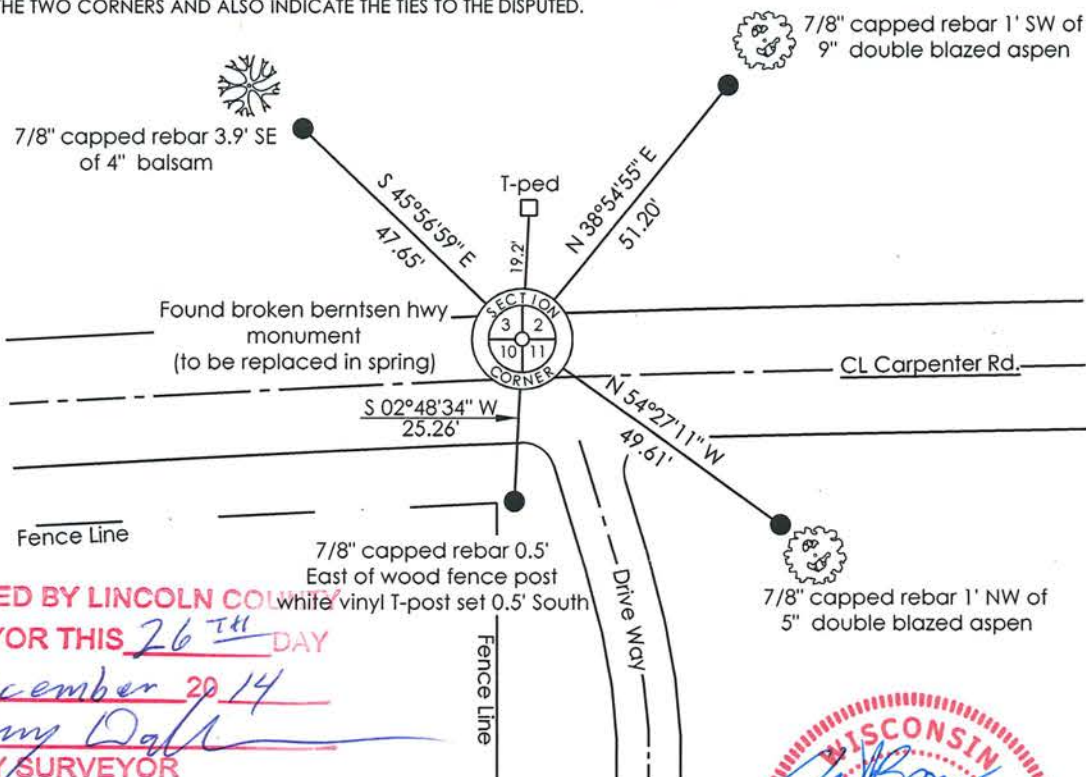
"From Section corner common to Sections 3, 4, 9 and 10

36.43 chains W. edge Somo River, 37.38 chains E. edge Somo River, 38.46 chains had Var. S of Smith's 1/4 corner 79 lks, 38.70 chains had Var. S of Thomas' 1/4 corner 80 lks, 41.21 chains CL traveled track of highway, 77.29 chains Var S. 1.55 chains identified cor of 2-3-10-11 by a 2"x2" steel bar and B.T. S.M. 16" N59°W 46 1/2 links. Set monument no other trees to mark". Although it is not stated in the field notes D.S. Burnett had the reputation of setting a 2.5" iron pipe with 5"x5" steel plates on top and bottom and a steel rod through the middle bent over at each end at corner locations (commonly referred to as a Burnett monument).

Nov. 1974 - Robert Winat re-established the corner location using the road and fence to the south. Resident witnesses to corner: William Sanderson, Clarence Marheine. "No evidence of D.S. Burnett's 1923 re-survey monument was found, although Mr. William Sanderson, a longtime resident of the area, states the plate was visible in the road at the fence line for many years. However, the distance along the south line of Section 3 is only 1.8 feet shorter than D.S. Burnett's in 1923, the original road to the west and the existing road intersect at this point and the existing road and a tree line west of the Big Somo River match the Section line location." Witnessed by: PK with disc in 3" maple S70°E 52.20', PK with disc in 4" fence post S35°W 31.58', PK with disc in 8" aspen N14°E 37.50', PK with disc in 5" maple N75°E 85.04'.

Dec. 2014 - Chad A. Besaw found Winat's Berntsen monument 4' north of CL Carpenter Rd. broken off and down 12" from road surface. I accepted the midpoint of the remaining section of the Berntsen monument as the corner location and will replace the broken monument with a new berntsen after the road thaws. See Section Summary filed with this USPLS monument record. Witnessed as shown below:

PLAN VIEW OF CORNER WITH TIES TO AT LEAST 4 WITNESS MONUMENTS. IF IN DISAGREEMENT WITH PREVIOUSLY ESTABLISHED CORNER, SHOW THE DISTANCES BETWEEN THE TWO CORNERS AND ALSO INDICATE THE TIES TO THE DISPUTED.



RECEIVED BY LINCOLN COUNTY SURVEYOR THIS 26TH DAY OF December 20 14
Tony Daff
 COUNTY SURVEYOR

I, Chad A. Besaw, Registered Land Surveyor No. S-3029, hereby certify that the corner location on this record was determined by me or under my direction and control and that this U.S. Public Land Survey Monument Record is correct and complete to the best of my knowledge and belief.

Chad A. Besaw 12-26-14
 Chad A. Besaw, RLS No. S-3029
 STEIGERWALDT LAND SURVEYING, LLC



SCALE: 1" = 30'

INDEX NO.

E-17

CERTIFIED LAND CORNER RESTORATION

Index No. E-17

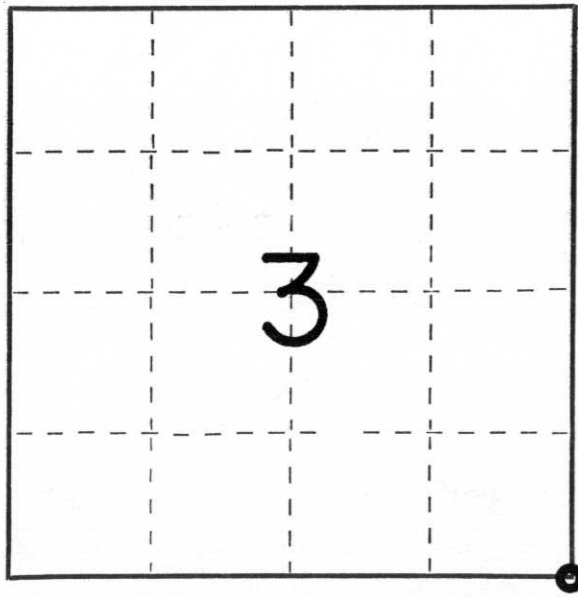
State of Wisconsin }
County of Lincoln } ss.

I Robert H. Winat, do hereby certify that on the 21st day of December, 19 72, I found evidence of the Southeast corner of Section 3 Township 35, North, Range 4 East, Fourth, Principal Meridian, as described hereon; and that from this evidence I established a new monument and accessories as described hereon to perpetuate the original location of this corner.

Resident witnesses:

William Sanderson

Clarence Marheine



○ = Corner monument restored.

History of original corner establishment:

Surveyor: Edward D. Palmer
Date: April and May, 1865
Monumentation: Wood Post
Witnesses: 9" Birch N25°W 18 lks.
11" Birch N75°E 24 lks.
7" Hemlock S40°E 22 lks.
12" Hemlock S47°W 17 lks.

Description of corner evidence found:

The corner common to Sections 2, 3, 10 and 11 was re-established, using the road and fence to the south. No evidence of D.S. Burnett's 1923 re-survey monument was found, although Mr. William Sanderson, a long time resident of the area, states the plate was visible in the road at the fence line for many years. However, the distance along the south line of Section 3 is only 1.8 feet shorter than D.S. Burnett's in 1923, the original road to the west and the existing road intersect at this point and the existing road and a tree line west of the Big Somo River match the section line location.

Description of monument and accessories I established to perpetuate the original location of this corner.

Lincoln Co. Berntsen monument 36"
4' N. of centerline
PK/Disc in 3" Maple S70°E 52.20'
PK/Disc in 4" Fence post S35°W, 31.58'
PK/Disc in 8" Aspen N14°E, 37.50'
PK/Disc in 5" Maple N75°E, 85.04'

Dated at Minocqua, Wis., this 15th day of November, 19 74

Signature Robert H. Winat Title Land Surveyor Registration No. S-1040
(County Surveyor, Registered Land Surveyor, or other duly authorized official)

Office of Register of Deeds, County of _____, I hereby certify that the within instrument was filed in this office for record on the _____ day of _____, 19 _____ at _____ o'clock _____ M.

(Register of Deeds)

By _____ Deputy