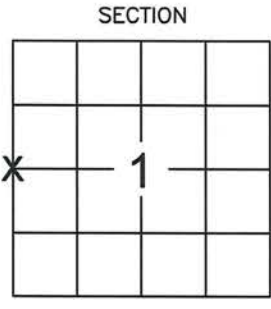


LINCOLN COUNTY U.S. PUBLIC LAND SURVEY MONUMENT LOCATION RECORD

SECTION 1
 TOWNSHIP 35 N
 RANGE 4 E
 SOMO
 CITY, VILLAGE, TOWN

C-21
 NO.

LANDMARK BENCHMARK
 CORNER IDENTITY: WEST 1/4 CORNER (3/4" REBAR) FOUND SET
 LINCOLN COUNTY COORDINATE: N: _____ RESET
 E: _____ RE-TIED
 ELEVATION-(FEET): _____ DATUM: _____
 WEATHER: OVERCAST
 DATE OF SURVEY: 1/3/2014 TEMPERATURE: 5 °F
 SURVEY PARTY: CHRIS FIERI & KEITH WALKOWSKI



LOCATION (Indicated By X)



BASIS FOR MONUMENT LOCATION:

(DESCRIBE METHOD OF SURVEY AND CORNER AUTHENTICATION)

September 21, 1923 - Burnett recovered a brake stem at this corner location. "Set for 1/4 Corner". Marked new bearings
 H. Maple 16" N55°40'W 73 lks.
 S. Elm 12" N53°45'E 1.38 chs.

January 3, 2014 - K. Walkowski and I visited this corner location and recovered the monument of record badly bent. Found a P.K. nail in the side of the monument set by Tony Dallman ± 8" below the surface of Meyer Road. Set a 3/4" x 18" Rebar at this location and tied out to perpetuate the corner location as shown below.

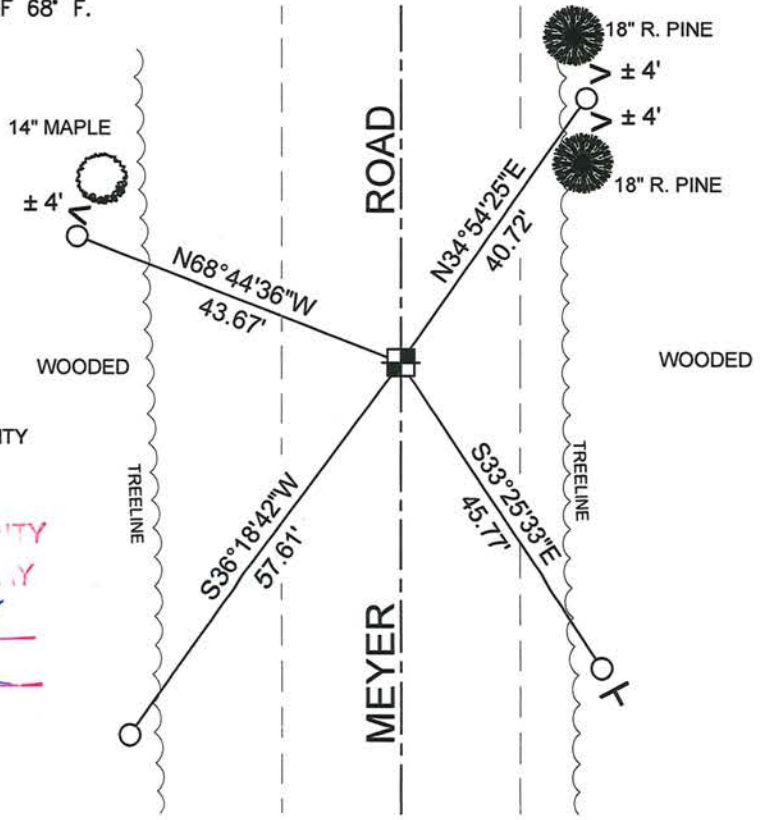
CERTIFIED CORRECT:
Christopher L. Fieri
 CHRISTOPHER L. FIERI S-2954
 Registered Land Surveyor
 DATE: 1-7-2014

COMPANY RIVERSIDE LAND SURVEYING LLC

TIE SKETCH:

SHOW MINIMUM OF FOUR (4) HORIZONTAL TIE DISTANCES TO FIXED WITNESS MONUMENTS. DESCRIBE ALL MONUMENTS FOUND OR SET. CORRECT ALL DISTANCES SHOWN TO STANDARD TEMPERATURE OF 68° F.

- T - VINYL "T" SURVEY MARKER POST
- O - 1" REBAR W/ ALUMINUM LINCOLN COUNTY SURVEY MARKER CAP SET
- - 3/4" REBAR SET



BEARINGS REFERENCED TO THE LINCOLN COUNTY COORDINATE SYSTEM (NAD83 2011).

RECEIVED BY LINCOLN COUNTY SURVEYOR THIS 10TH DAY OF January 20 14
Tony Walk
 COUNTY SURVEYOR

- THIS DRAWING IS NOT TO SCALE

C-21
 NO.