

CERTIFIED LAND CORNER RESTORATION

Index No. 5-1

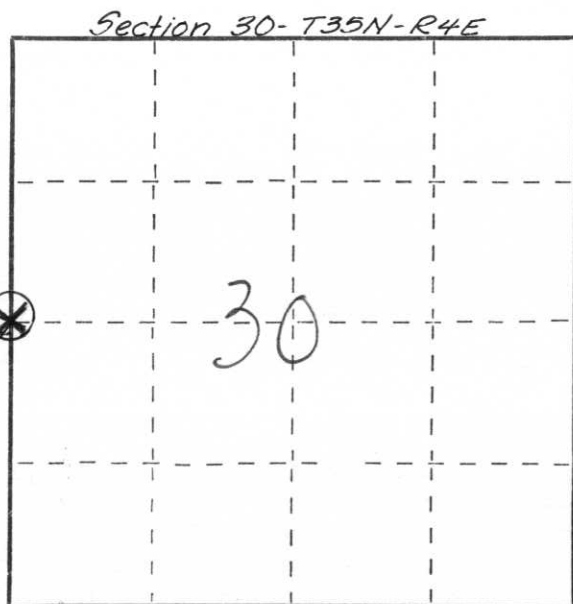
State of Wisconsin }
 County of Portage } ss.

I, Joseph S. Glodowski, do hereby certify that on the 12 day of May, 1982, I found evidence of the West quarter corner of Section 30

Township 35, North, Range 4 East, Fourth, Principal Meridian, as described hereon; and that from this evidence I established a new monument and accessories as described hereon to perpetuate the original location of this corner.

Resident witnesses:

.....



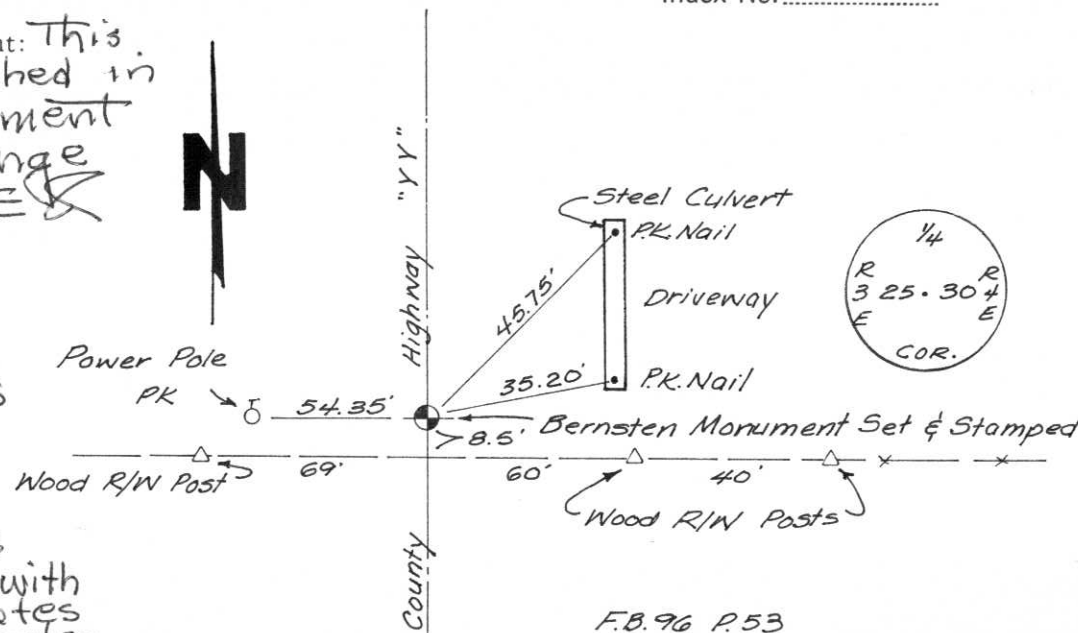
○ = Corner monument restored.

History of original corner establishment: This corner was established in the original government survey of the range line between R3E & R4E

Description of corner evidence found: Corner location was determined by a traverse of the entire section & compiling all available evidence, comparing with the original field notes & placing in the computer. Field work Wild Theodolite & EDM

Description of monument and accessories I established to perpetuate the original location of this corner.

Berntsen cast aluminum monument placed on corner - tied to witness monuments as shown. PK spikes set both ends of culvert - PK spike placed at ground level in power pole - Wood right of way posts tied as shown



Dated at Stevens Point, Wis., this 28 day of June, 1982

Signature Joseph S. Glodowski Title Registered Land Surveyor Registration No. S-1333
 (County Surveyor, Registered Land Surveyor, or other duly authorized official)

Office of Register of Deeds, County of....., I hereby certify that the within instrument was filed in this office for record on the.....day of....., 19..... at.....o'clock..... M.

.....
 (Register of Deeds)

By.....Deputy