

CERTIFIED LAND CORNER RESTORATION

Index No. U-1

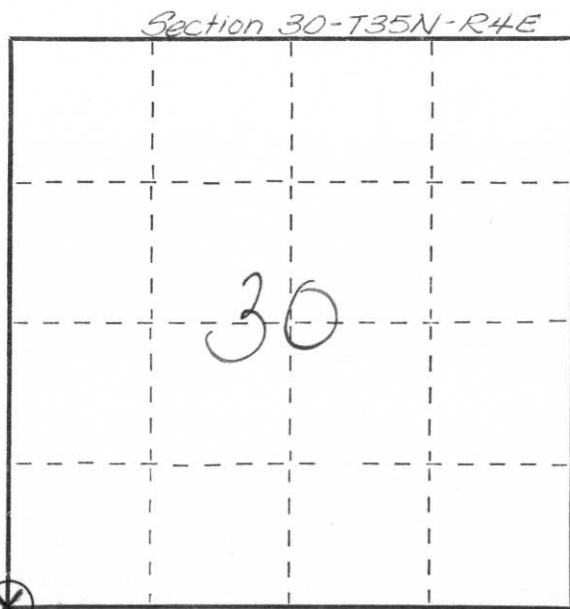
State of Wisconsin }
County of Portage } ss.

I, Joseph S. Glodowski, do hereby certify that on the 12 day of May, 1982, I found evidence of the Southwest corner of Section 30

Township 35, North, Range 4 East, Fourth, Principal Meridian, as described hereon; and that from this evidence I established a new monument and accessories as described hereon to perpetuate the original location of this corner.

Resident witnesses:

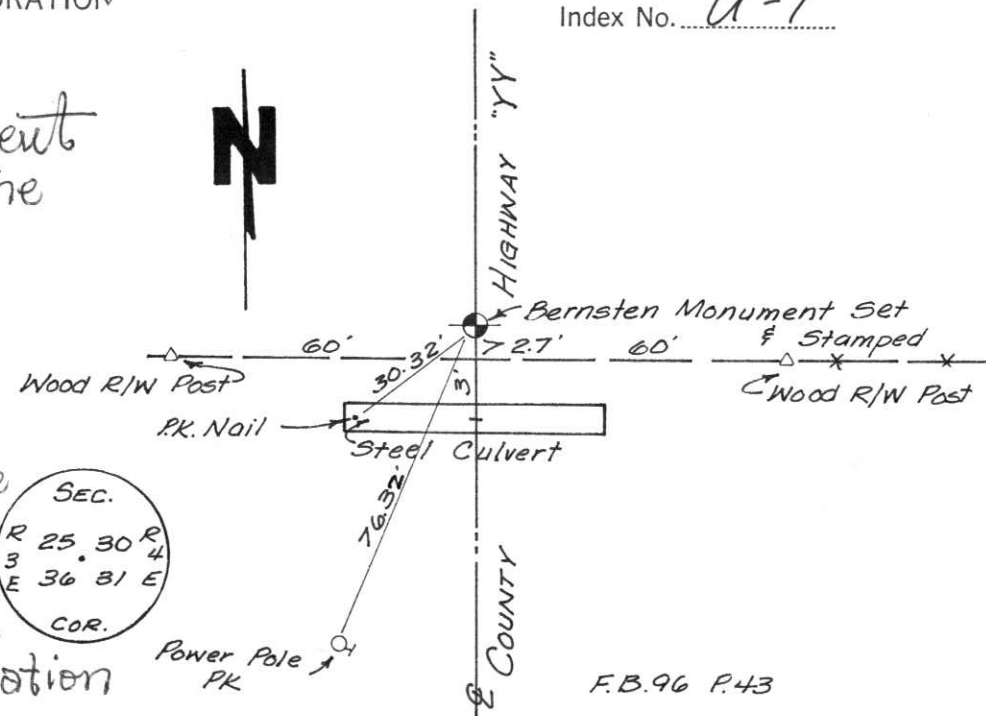
.....
.....
.....



○ = Corner monument restored.

History of original corner establishment:
Corner was established in the original government survey of the range line between R3 & R4

Description of corner evidence found:
Corner location was determined by a traverse of the entire section & compiling all available evidence, then comparing with original field notes. Field work with EDM & theodolite - Computation on Computer.



Description of monument and accessories I established to perpetuate the original location of this corner.

Bernsten cast aluminium monument placed on corner - tied to witness monuments as shown. P-K spike in culvert, PK spike at ground level in power pole. Wood right of way posts on East & West lines of CT Hwy Y as shown.

Dated at Stevens Point, Wis., this 28 day of June, 1982

Signature Joseph S. Glodowski Title Registered Land Surveyor Registration No. S-1333
(County Surveyor, Registered Land Surveyor or other duly authorized official)

Office of Register of Deeds, County of _____, I hereby certify that the within instrument was filed in this office for record on the _____ day of _____, 19____ at _____ o'clock _____ M.

(Register of Deeds)

By _____ Deputy