

# U.S. PUBLIC LAND SURVEY MONUMENT RECORD

NOTE: THIS FORM IS INTENDED AND DESIGNED TO FULFILL ALL REQUIREMENTS OF WISCONSIN ADMINISTRATIVE CODE, CHAPTER A-E 7.08, U.S. PUBLIC LAND SURVEY MONUMENT RECORD (3) (A) (B) (C) (D) (E) (F) (G) (H) (I). AN ADDITIONAL SHEET MAY BE ADDED IF NECESSARY TO CONFORM WITH SAID REQUIREMENTS.

## LINCOLN COUNTY

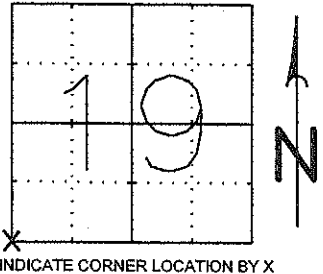
(A) SECTION 19 CORNER IDENTITY S 1/4 BERNTSEN

TOWNSHIP 35 NORTH

RANGE 4 EAST

TOWN, CITY, VILLAGE SOMO

FOUND   
 SET   
 TIED   
 RETIED



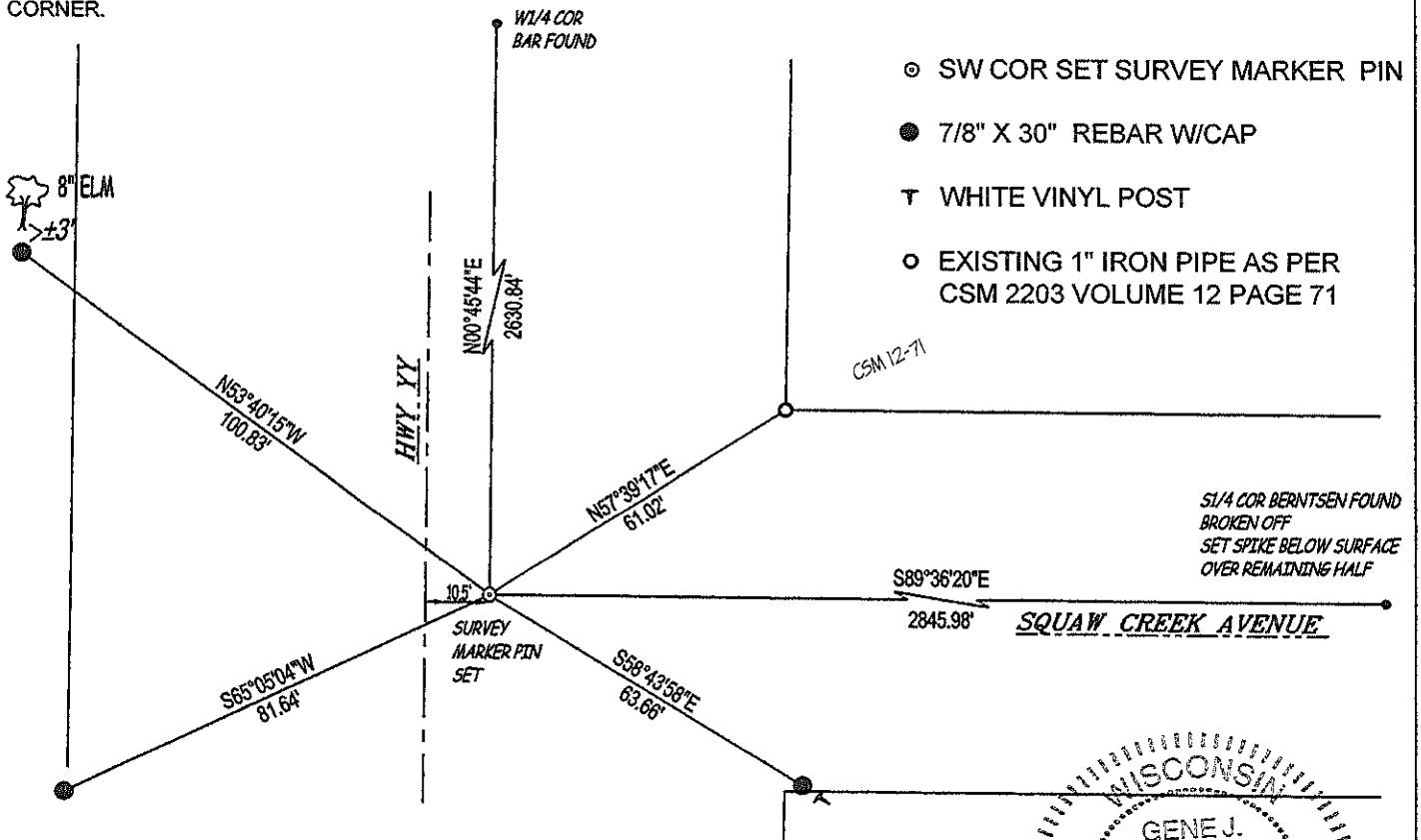
INDICATE CORNER LOCATION BY X

(B) (F) (G) (H) DESCRIPTION OF MONUMENT FOUND AT THIS CORNER AND IF IT WAS ACCEPTED, STATE ALL EVIDENCE (MATERIALS, TESTIMONIAL, OCCUPATIONAL, PLATS, RECORDS, OTHER MONUMENTS) USED AS A BASIS FOR ACCEPTING. IF NOT ACCEPTED OR IF NOTHING WAS FOUND, STATE EVIDENCE USED AS A BASIS FOR ESTABLISHING LOCATION. IF REESTABLISHED THROUGH LOST CORNER PROPORTIONATE METHODS, INDICATE ALL MONUMENTS, DISTANCES, AND DIRECTIONS USED TO ESTABLISH.

PULLED TWO REMAINING TIES TO CULVERT ENDS. FOUND NO MONUMENT AT CORNER LOCATION. ESTABLISHED A TEMPORARY LOCATION FOR THE CORNER BY ARCS. TRAVERSED TO C1/4, SOUTH 1/4 AND WEST 1/4 AND COMPARED DISTANCES WITH OFFERMAN SUMMARY. CREATED A BEST FIT LOCATION FOR CORNER USING THE TIES AND THIS TRAVERSE INFORMATION, SET A SURVEY MARKER PIN AND FOUR TIES WITH WITNESS POSTS.

RECEIVED BY LINCOLN COUNTY  
 SURVEYOR THIS 19<sup>TH</sup> DAY  
 OF June 20 09  
Tom Walker  
 COUNTY SURVEYOR

(C) (D) (E) PLAN VIEW OF CORNER WITH TIES TO AT LEAST 4 WITNESS MONUMENTS. IF IN DISAGREEMENT WITH PREVIOUSLY ESTABLISHED CORNER, SHOW THE DISTANCES BETWEEN THE TWO CORNERS AND ALSO INDICATE THE TIES TO THE DISPUTED CORNER.



(I) I, GENE J. WADZINSKI RLS 2400  
 (TYPE OR PRINT NAME, LICENSE #) CERTIFY THAT THE CORNER LOCATION ON THIS RECORD WAS DETERMINED BY ME OR UNDER MY DIRECTION AND CONTROL AND THAT THIS U.S. PUBLIC LAND SURVEY MONUMENT RECORD IS CORRECT AND COMPLETE TO THE BEST OF MY KNOWLEDGE AND BELIEF.

SIGNATURE Gene J. Wadzinski DATE 6/18/09



SEAL OR STAMP

CERTIFIED LAND CORNER RESTORATION

Index No. Q-1

State of Wisconsin }  
County of Portage } ss.

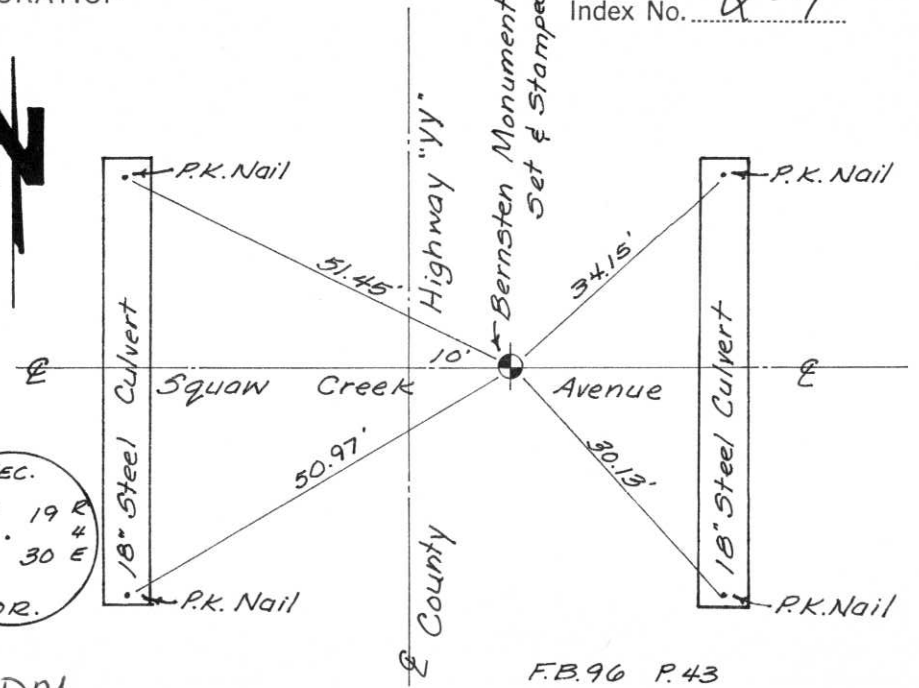
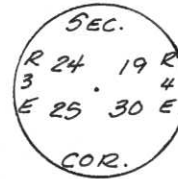
I, Joseph S. Gladowski, do hereby certify that on the 10 day of May, 1982, I found evidence of the Northwest corner of Section 30

Township 35, North, Range 4 East, Fourth, Principal Meridian, as described hereon; and that from this evidence I established a new monument and accessories as described hereon to perpetuate the original location of this corner.

Resident witnesses:  
\_\_\_\_\_  
\_\_\_\_\_  
\_\_\_\_\_

History of original corner establishment:  
This corner was established in the original government survey of the range line between R 3E & R 4E

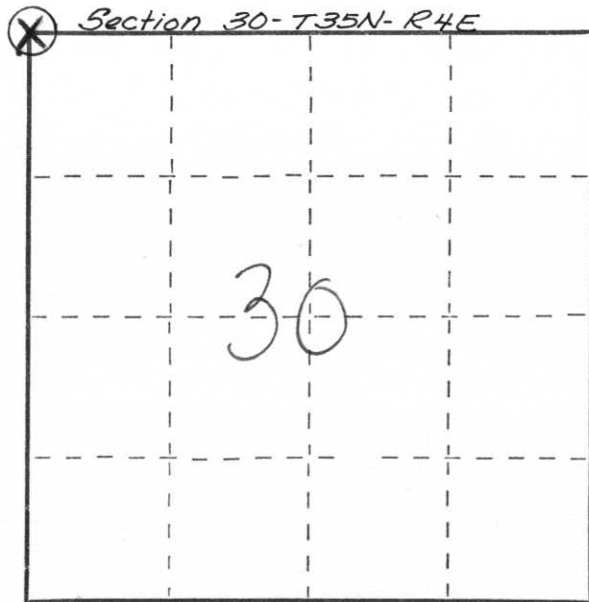
Description of corner evidence found:  
Corner location was determined by a traverse of the entire section & compiling all available evidence, comparing with the original field notes & placing in computer.  
Field work Wild Theodolite & EDM



F.B. 96 P. 43

Description of monument and accessories I established to perpetuate the original location of this corner.

Berntsen cast aluminum monument placed on corner - tied to witness monuments as shown - P-K spikes set in ends of both culverts as shown.



○ = Corner monument restored.

Dated at Stevens Point, Wis., this 28 day of June, 1982

Signature Joseph S. Gladowski Title Registered Land Surveyor Registration No. S-1333  
(County Surveyor, Registered Land Surveyor or other duly authorized official)

Office of Register of Deeds, County of \_\_\_\_\_, I hereby certify that the within instrument was filed in this office for record on the \_\_\_\_\_ day of \_\_\_\_\_, 19\_\_\_\_ at \_\_\_\_\_ o'clock \_\_\_\_\_ M.

(Register of Deeds)

By \_\_\_\_\_ Deputy