

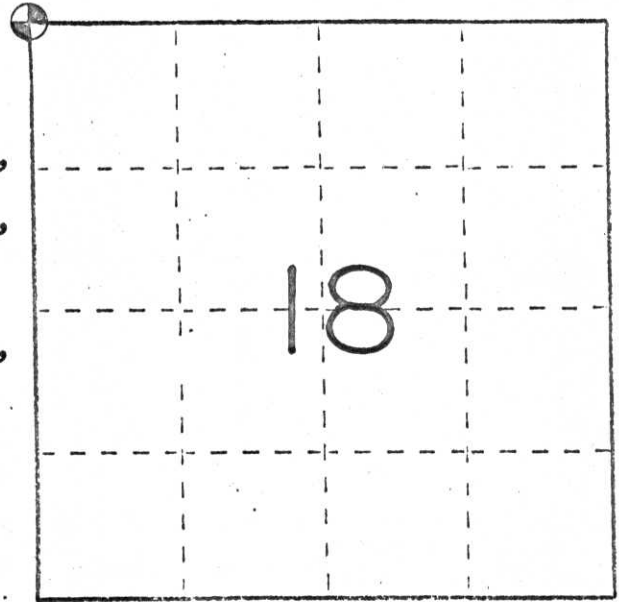
U. S. PUBLIC LAND SURVEY MONUMENT RECORD

INSTRUCTIONS: This record shall show the location of the corner and shall include all of the following nine elements (a through i).

(a) Identify the corner by reference to the U.S. public land survey system.

○ = Corner monument restored.

- The NW corner of Sec. 18, T. 35 N., R. 4 E., Lincoln County, Wi.
- The NE corner of Sec. 13, T. 35 N., R. 3 E., Price County, Wi.
- The SW corner of Sec. 7, T. 35 N., R. 4 E., Lincoln County, Wi.
- The SE corner of Sec. 12, T. 35 N., R. 3 E., Price County, Wi.



T. 35 N., R. 4 E.

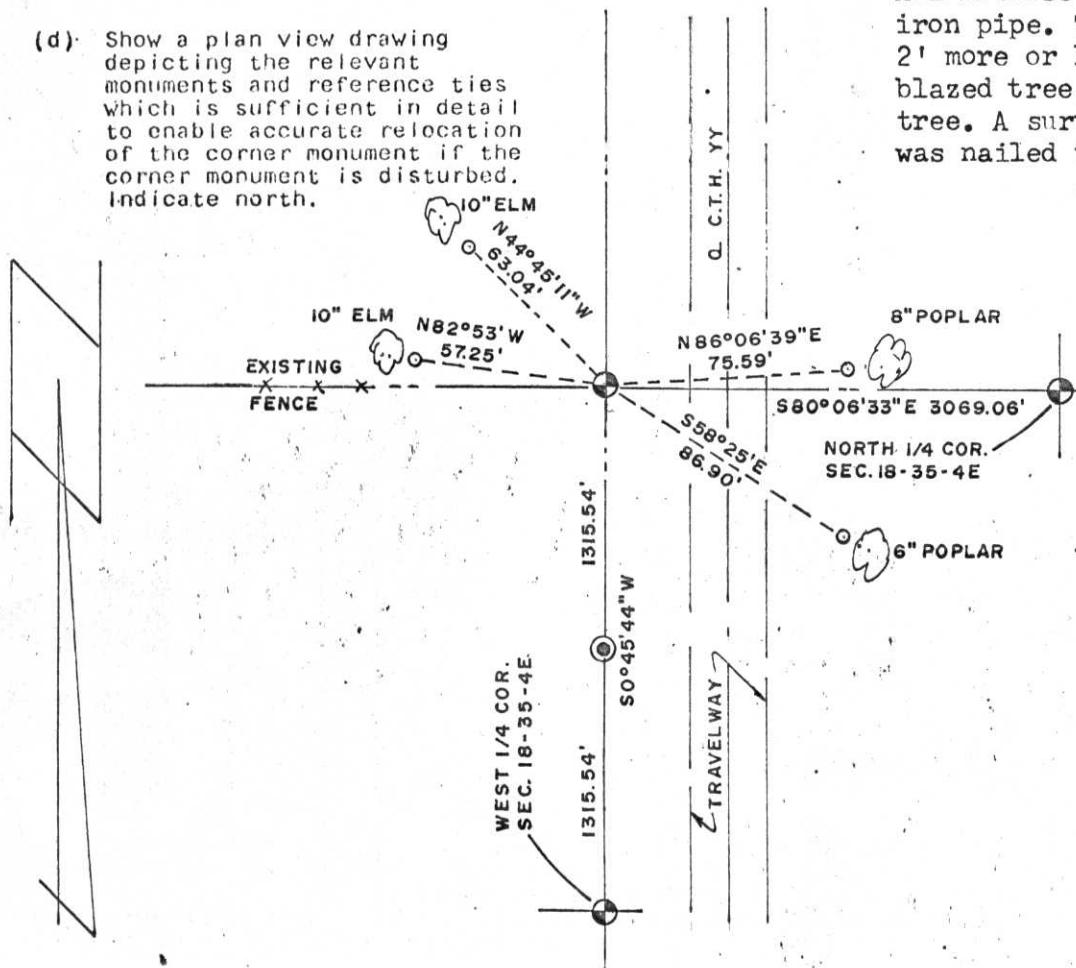
(b) Describe any record evidence, monument evidence, occupational evidence, testimonial evidence or any other material evidence you considered, and whether the monument was found or placed.

An existing fence, more or less on line, was found in place, running westerly of the corner. A Berntsen W-1-C monument was set in place.

(c) In the plan view drawing below, provide reference ties to at least 4 witness monuments, or, if the location is within a municipality, to at least 2 witness monuments. (Witness monuments shall be made of concrete, natural stone, iron or other equally durable material.) Describe witness monuments.

All witness monuments are 1"x2 1/4" iron pipe. The witness pipes are set 2' more or less, in front of a blazed tree. See sketch for type of tree. A survey marker warning sign was nailed to the blazed tree.

(d) Show a plan view drawing depicting the relevant monuments and reference ties which is sufficient in detail to enable accurate relocation of the corner monument if the corner monument is disturbed. Indicate north.



1-1

(e) Describe any material discrepancy between the location of the corner as restored or reestablished and the location of that corner as previously restored or reestablished by distance and direction. Show the discrepancy on the plan view drawing under (d), above. Show the distances between the corner as previously restored or reestablished and (1) the corner as restored or reestablished, and (2) to at least 2 of the witness monuments shown on the drawing in (d), above.

(f) Was the corner restored through acceptance of (1) an obliterated evidence location, or, (2) a found perpetuated location? No.

(g&h) Was the corner reestablished through lost corner proportionate methods? If so, show the method, including the directions and distances to other public land survey corners used as evidence or used for proportioning in determining the corner location?

The NW corner of the SW $\frac{1}{4}$ of the NW $\frac{1}{4}$ of Sec. 18 has been previously found in place and monumented by the Wisconsin Department of Transportation. This corner is a 2" iron pipe. This corner location was determined by extending the line between the West $\frac{1}{4}$ corner of Section 18 and the NW corner of the SW $\frac{1}{4}$ of the NW $\frac{1}{4}$ of Section 18 and doubling the distance between the two corners.

All bearings are referenced to the East line of the SE $\frac{1}{4}$ of Section 18, assumed as Bearing N 0 42' E.

See also the survey maps filed with the Lincoln Co. Surveyor, the Lincoln Co. Forestry Dept., and the Price Co. Surveyor.

See the sketch for other corners located in the area of this corner.

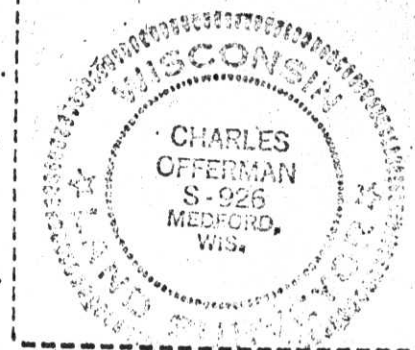
RECEIVED AT LINCOLN COUNTY
COURTHOUSE THIS 28 DAY
OF December, 1982
Patrick Priebe
TAX DESCRIPTION OFFICE

Charles Offerman

(1) I, Charles Offerman
(type or print name) certify that the corner location shown on this record was determined by me or under my direction and control and that this U.S. Public Land Survey Monument Record is correct and complete to the best of my knowledge and belief.

12/26/82
NW cor. 18-35-1E

Affix Land Surveyor Seal



Sheet 2 of 2