

U.S. PUBLIC LAND SURVEY MONUMENT RECORD

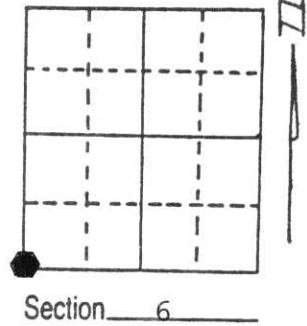
Note: This form is intended and designed to fulfill all requirements of Wisconsin Administrative Code, Chapter A-E 5.02, U.S. Public Land Survey Monument Record (3) (a) (b) (c) (d) (e) (f) (g) (h) (i). An additional sheet may be added if necessary to conform with said requirements.

(a) Corner location: Township 35 North

Range 4 East

Town/City/Village Somo

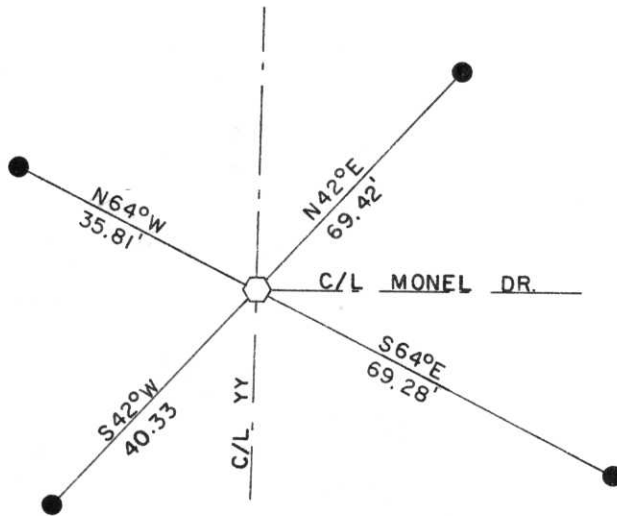
County Lincoln



(b) (f) (g) (h) Description of monument found at this corner and if it was accepted, state all evidence (material, testimonial, occupational, plats, records, other monuments) used as a basis for accepting. If not accepted or if nothing was found, state evidence used as basis for establishing location. If reestablished through lost corner proportionate methods, indicate all monuments, distances and directions used to establish.

- 1864 - GOV'T SURVEYOR SET POST FOR CORNER TO SECTIONS 1, 6, 7 AND 12 AND MADE THE FOLLOWING B.T.'s: HEMLOCK 10" N28°W 11 LINKS; HEMLOCK 12" N18°E 19 LINKS; HEMLOCK 10" S70°E 21 LINKS; HEMLOCK 10" S10°W 4 LINKS
- 1923 - BURNETT FOUND STUMPS OF ORIGINAL GOV'T B.T.'s: HEMLOCK 12" N18°E 19 LINKS; HEMLOCK 10" S70°E 21 LINKS; SET MONUMENT AND MADE THE FOLLOWING B.T.'s: BIRCH 18" S40°E 62 1/2 LINKS; BIRCH 10" W 70 LINKS
- 1996 - WILLIAM E. BANDOW SET L.C.M. AND WITNESSED AS SHOWN BELOW

(c) (d) (e) Plan view of corner with ties to at least 4 witness monuments. If in disagreement with previously established corner, show the distances between the two corners and also indicate the ties to the disputed corner.



NOTE: BEARINGS TAKEN WITH A HAND HELD MAGNETIC COMPASS. NO SCALE. CARSTENITE POST SET 30' WEST OF COR. COR. IS C/L YY AND C/L MONEL DR. SEE BACK SIDE OF THIS SHEET.

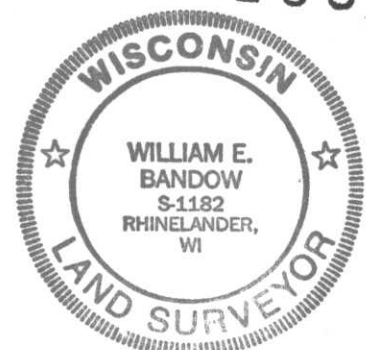
LEGEND

- SET 3/4" IRON ROD
- SET 3/4" CAPPED IRON ROD

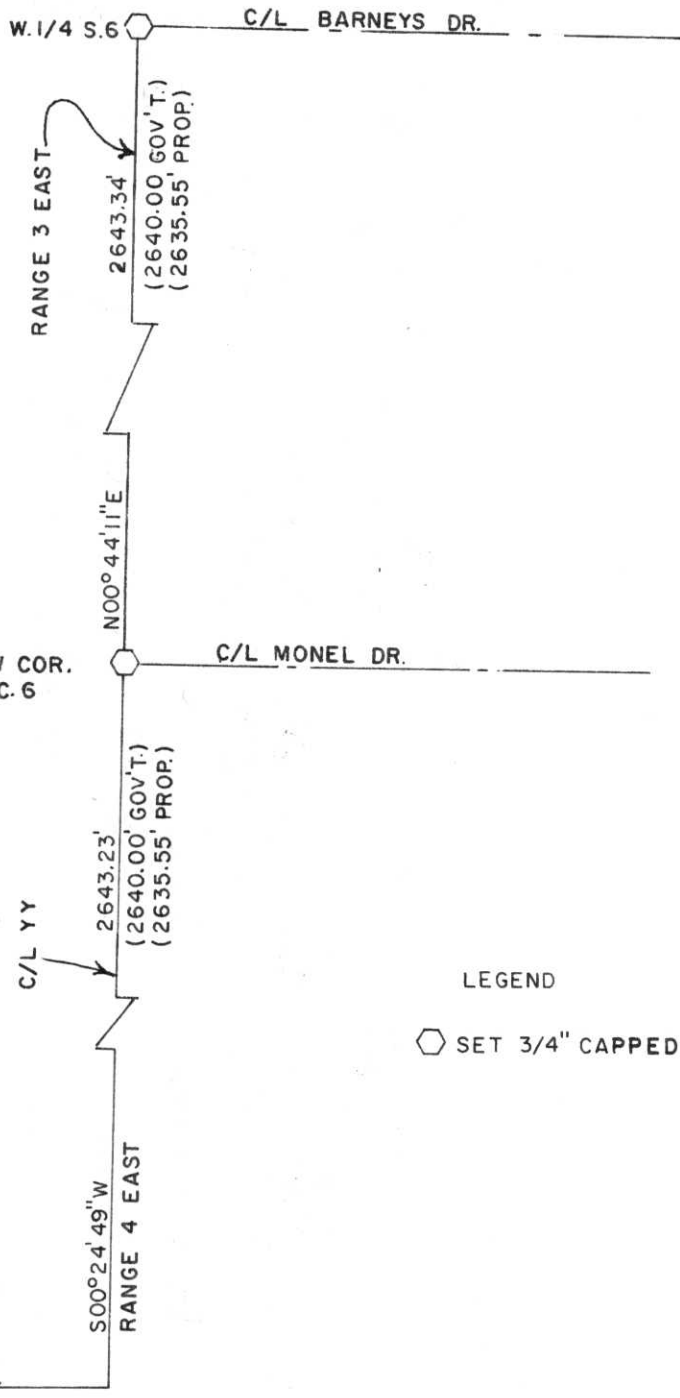
RECEIVED AT LINCOLN COUNTY COURTHOUSE THIS 10th DAY OF Sept 19 96
 Tax Pat Prebe DESCRIPTION OFFICE

(i) I, William E. Bandow
 (type or print name) certify that the corner location on this record was determined by me or under my direction and control and that this U.S. Public Land Survey Monument Record is correct and complete to the best of my knowledge and belief.

William E. Bandow 9-6-96
 Signature Date



Index No. E-1



LEGEND

⬡ SET 3/4" CAPPED IRON ROD

NOTE: PROPORTIONATE MEASUREMENT WAS ASCERTAINED FROM WEST LINE MEASUREMENT OF SOMO TOWNSHIP.

BY DEPOSITION OFFICE

IN

TO

FOR

RECORD

DATE

BY

RECORD

DATE

BY

RECORD

DATE

BY

RECORD

DATE

BY

RECORD

DATE

BY

RECORD

DATE

BY

RECORD

DATE

BY

RECORD

DATE

BY

RECORD

DATE

BY

RECORD

DATE