

U.S. PUBLIC LAND SURVEY MONUMENT RECORD

NOTE: THIS FORM IS INTENDED AND DESIGNED TO FULFILL ALL REQUIREMENTS OF WISCONSIN ADMINISTRATIVE CODE, CHAPTER A-E 7.08, U.S. PUBLIC LAND SURVEY MONUMENT RECORD (3)(a)(b)(c)(d)(e)(f)(g)(h)(i). ADDITIONAL SHEETS MAY BE NECESSARY TO CONFORM TO SAID REQUIREMENTS.

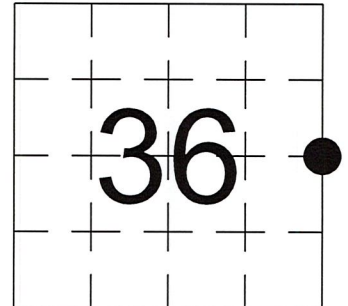
T 34 N, R 8 E

(a) CORNER LOCATION:

EAST 1/4 CORNER, SECTION 36
 TOWNSHIP 34 NORTH
 RANGE 8 EAST
 TOWN OF HARRISON
 LINCOLN COUNTY
 WISCONSIN

(b) HISTORY OF ORIGINAL CORNER:

ORIGINAL SURVEYOR: See Previous Tie Sheet
 COMMENCING DATE:
 COMPLETION DATE:
 ORIGINAL BEARING TREES:



(f)(g)(h) DESCRIPTION OF MONUMENT FOUND AT THIS CORNER AND IF IT WAS ACCEPTED. STATE ALL EVIDENCE (MATERIAL, TESTIMONIAL, OCCUPATIONAL, PLATS, RECORDS, OTHER MONUMENTS) USED AS A BASIS FOR ESTABLISHING LOCATION. IF RE-ESTABLISHING THROUGH LOST CORNER PROPORTIONATE METHODS, INDICATE ALL MONUMENTS, DISTANCES, AND DIRECTIONS USED TO ESTABLISH. INDICATE TYPE OF MONUMENTS FOUND OR SET.

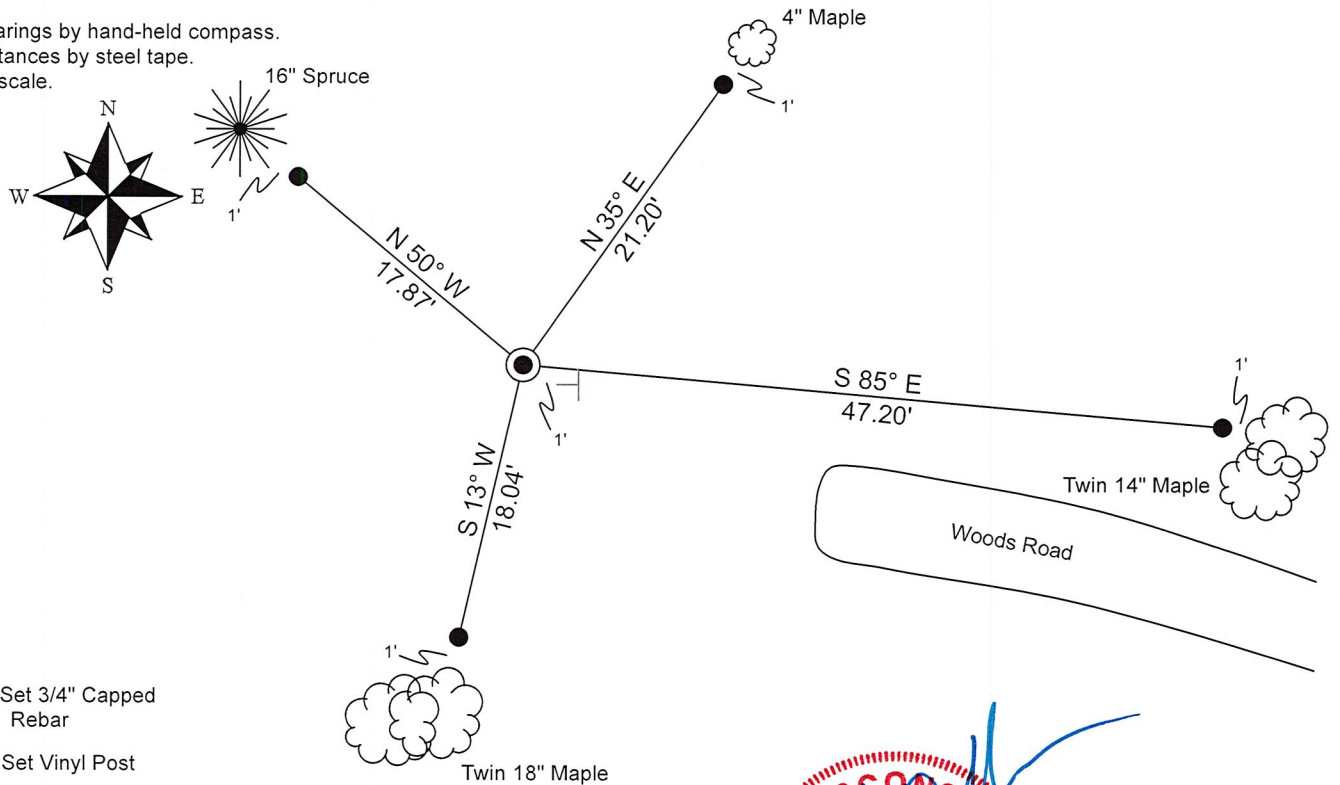
1937, T.H. Kilroe & D.A. Hintz, set Brass Capped Iron Pipe.

4/13-14/1966, Raymond Hallisy found Brass Cap set by Kilroe & Hintz.

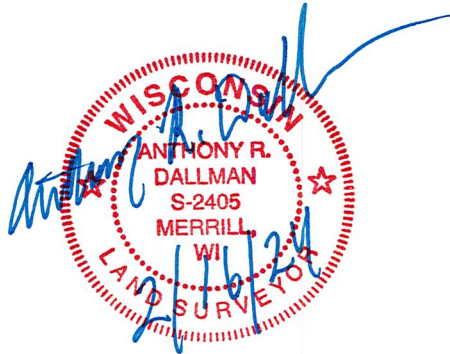
10/03/2023, I, Anthony R. Dallman, PLS-2405, found a 4" Brass Capped Iron Pipe, up 6". I accepted this location and set witness monuments, as shown in the sketch below, to further perpetuate the corner location.

(c)(d)(e) PLAN VIEW OF THE CORNER WITH TIES TO AT LEAST FOUR WITNESSES. IF IN DISAGREEMENT WITH PREVIOUSLY ESTABLISHED CORNER, SHOW THE DISTANCES BETWEEN THE TWO CORNERS AND ALSO THE TIES TO THE DISPUTED CORNER.

- Tie bearings by hand-held compass.
- Tie distances by steel tape.
- Not to scale.



I, ANTHONY R. DALLMAN, WISCONSIN PROFESSIONAL LAND SURVEYOR, S-2405, HEREBY CERTIFY THAT THE CORNER LOCATION ON THIS RECORD WAS REFERENCED BY ME OR UNDER MY DIRECTION AND CONTROL AND THAT THIS U.S. PUBLIC LAND SURVEY MONUMENT RECORD IS COMPLETE TO THE BEST OF MY KNOWLEDGE AND BELIEF.



Anthony R. Dallman 02/16/24
 ANTHONY R. DALLMAN, PLS S-2405

INDEX NO. W-25

43408362000

43408362000_Mon-N



43408362000_North



43408362000_West



43408362000_South



43408362000_East



CERTIFIED LAND CORNER RESTORATION

34-4 W-25
Index No.

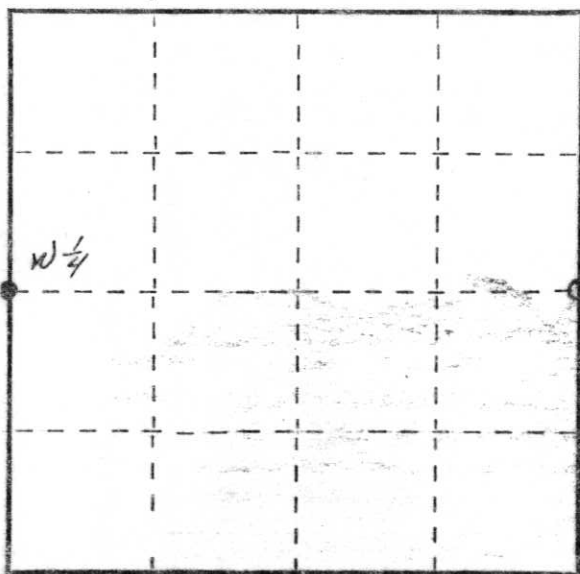
State of Wisconsin }
County of: LANGLADE } ss.

I RAYMOND J. HALLISY, do hereby certify that on the 13-14 day of APRIL, 1966, I found evidence of the E 1/4 AND W 1/4 corners of 31 Township 34 N, North, Range 9E, Fourth Principal Meridian, as described hereon; and that from this evidence I established a new monument and accessories as described hereon to perpetuate the original location of this corner.

Resident witnesses:

JERRY KEYKA - W.C.D. - ANTIGO
STAN BANASH - W.C.D. - ANTIGO

C36-34-8
T 34 N R 9 E



○ = Corner monument restored

History of original corner establishment:

LOCATED W 1/4 - BRASS CAP - RESURVEY OF 1937 BY T.H. KILROB AND DA. HINTE

LOCATED AND RESET E 1/4 - BRASS CAP - HISTORY - RESURVEY BY T.H. KILROB AND D.A. HINTE IN 1937 AND BOOK 162-163 OF STATE HWY COM - RHINELANDER, WISC. THE LATTER INFORMATION DESCRIBES CORNERS AND WORK IN RELOCATION OF CTH "H."

Description of corner evidence found:

BRASS CAPS FOR E 1/4 AND W 1/4
○ E 1/4 RESET
● W 1/4 LOCATED

Description of monument and accessories I established to perpetuate the original location of this corner.

TRANSIT SURVEY - CHAINS - PINS - AXES
(SEE BACK)

RESET E 1/4 - CHAIN BETWEEN NE SEC. COR. AND SW. SEC. CORNER. DISTANCE 99.36 CHAINS CORRES PONDING TO 1937 RESURVEY. LOCATE 2 REFERENCE CORNERS (DATA FROM ABOVE BOOK) AND RESET E 1/4 COR. ON EAST SIDE OF CTH H

Dated at ANTIGO, Wis., this 3 day of MAY, 1966.

Signature Raymond J. Hallisy Title Asst. Dist. Forester and Reg. Wisc. Land Surveyor Registration No. 5-685
(County Surveyor, Registered Land Surveyor, or other duly authorized official)

Office of Register of Deeds, County of _____, I hereby certify that the within instrument was filed in this office for record on the _____ day of _____, 19____ at _____ o'clock _____ M.

(Register of Deeds)

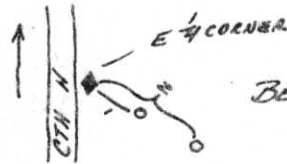
By _____ Deputy

OVER

FORM 985 H. C. MILLER CO., MILWAUKEE

36-34-8
E 1/4

Wis. Highway Dept - Box 162-163 Rhineland - Ripon corner
 @ E 1/4 corner



BEARING 523°24'E ? Further confirmation needed - I believe bearing should be complementary angle of 566°36'E to correspond with 1937 survey
 DIST ON REFERENCE COR
 1 36.85 FT
 2 63.88 FT

COMMENCING AT E 1/4 CORNER USING 2° E DEC
 COMMENCE TRANSIT RANDOM LINE AT 587° 45' W
 LENGTH OF RANDOM 86.785 CHAINS FELL 94 LINKS NORTH OF CORNER
 CORRECTION 1.08 LINKS SOUTH/CHAIN TO TRUE LINE

BEARING OF TRUE LINE 587° 7' 15" W

CORRECTED LINE EAST TO WEST

5 LKS	EAST EDGE OF CTH "N" (BLACKTOP)
1.0 CHAINS	EAST WEST EDGE OF FIELD
11.50 "	WEST " " "
20.00 "	SET SQUARE POST (21.60 LKS SO. OF RANDOM) THIS "IS NOT" A CORNER - ONLY MARKS LINE
40.00 "	SET SQUARE POST (43.20 LINKS SO. OF RANDOM) THIS "IS NOT" A CORNER - ONLY MARKS LINE BT ELM 8" N 40°15' W 37 LKS ELM 10" N 52° W 88 LKS
60.00 "	SET SQUARE POST (64.80 LINKS) SO. OF RANDOM THIS "IS NOT" A CORNER - ONLY MARKS LINE BT ASPEN 12" N 57° W 17.5 LKS
80.00 "	PICKET ON LINE 86.40 LINKS SO OF RANDOM
86.74 "	W 1/4 CORNER.

POSTS AT 20.00, 40.00 AND 60.00 ARE NOT CORNERS. THEY ONLY MARK LINE AND DISTANCE FROM E 1/4 CORNER.