

# U.S. PUBLIC LAND SURVEY MONUMENT RECORD

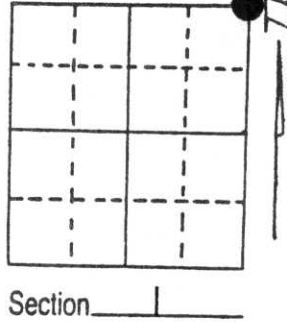
Note: This form is intended and designed to fulfill all requirements of Wisconsin Administrative Code, Chapter A-E 5.02, U.S. Public Land Survey Monument Record (3) (a) (b) (c) (d) (e) (f) (g) (h) (i). An additional sheet may be added if necessary to conform with said requirements.

(a) Corner location: Township 33 North

Range 8 East

Town [REDACTED] RUSSELL

County LINCOLN



(b) (f) (g) (h) Description of monument found at this corner and if it was accepted, state all evidence (material, testimonial, occupational, plats, records, other monuments) used as a basis for accepting. If not accepted or if nothing was found, state evidence used as basis for establishing location. If reestablished through lost corner proportionate methods, indicate all monuments, distances and directions used to establish.

RECEIVED AT LINCOLN COUNTY  
 COURTHOUSE THIS 28th DAY  
 OF June 1976  
*Pat Piche*  
 TAX DESCRIPTION OFFICE

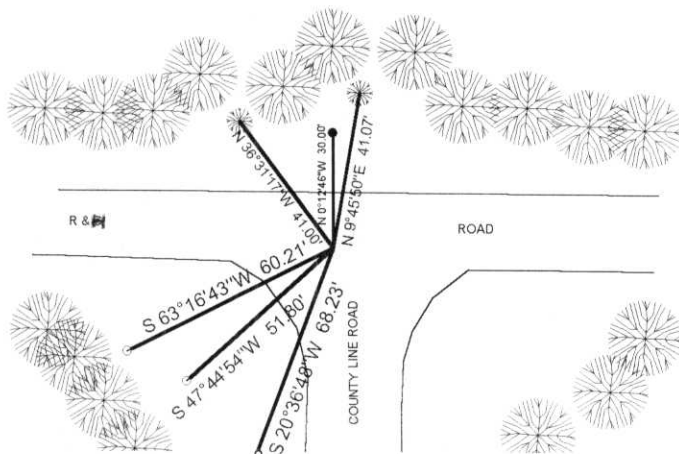
NOVEMBER 1975 WILLIAM KELLY FOUND A STONE TIPPED ON IT'S SIDE. SET A 2"x42" IP WITH BRASS CAP

NO EVIDENCE OF THE STONE OR BRASS CAP FOUND. THE ROAD INTERSECTION APPARENTLY HAS A SPRING UNDER IT AND IS VERY UNSTABLE.

I MET THE TOWN CHAIRMAN, RODNEY BURGNER, AT THIS SITE AND HE REQUESTED THAT NO MONUMENT BE RESET DUE TO GROUND CONDITIONS

(c) (d) (e) Plan view of corner with ties to at least 4 witness monuments. If in disagreement with previously established corner, show the distances between the two corners and also indicate the ties to the disputed corner.

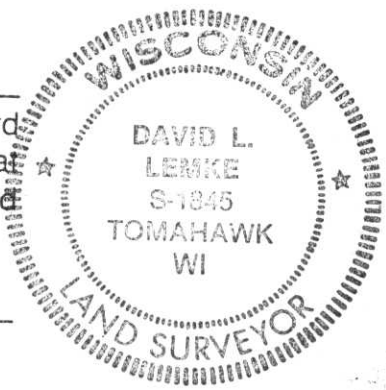
- 1 1/2" IP WITH BRASS CAP
- LINCOLN COUNTY WITNESS CAP
- ⊛ BEARING TREE BY KELLY



(i) I, DAVID L. LEMKE  
 (type or print name) certify that the corner location on this record was determined by me or under my direction and control and that this U.S. Public Land Survey Monument Record is correct and complete to the best of my knowledge and belief.

*David L. Lemke*  
 Signature

Date



Index No. A-25

CERTIFIED LAND CORNER RESTORATION

Index No. A-25

State of Wisconsin }  
County of LINCOLN } ss.

I WILLIAM F. KELLY do hereby certify that on the 16<sup>TH</sup> day of NOVEMBER, 1975, I found evidence of the SECTION corner of SECTIONS 36, 31, 1 & 6 Township 33 & 34, North, Range 8E & 9E, Fourth, Principal Meridian, as described hereon; and that from this evidence I established a new monument and accessories as described hereon to perpetuate the original location of this corner.

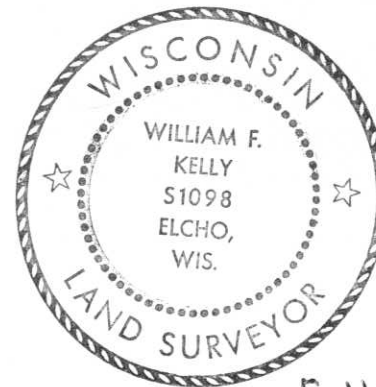
Resident witnesses:

.....

.....

.....

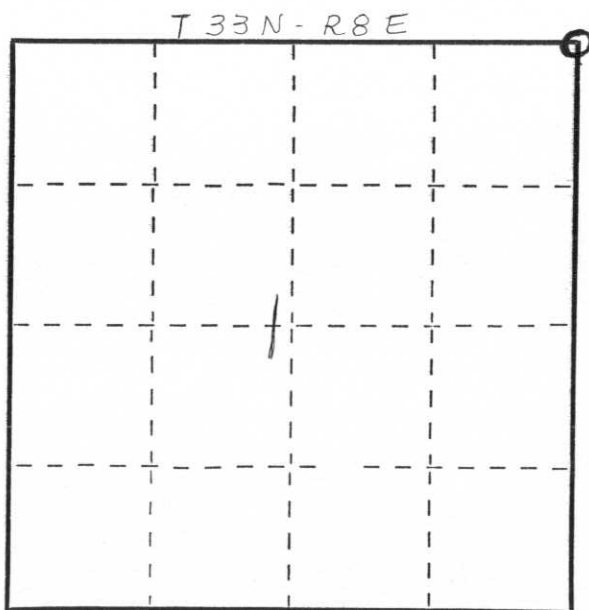
History of original corner establishment:



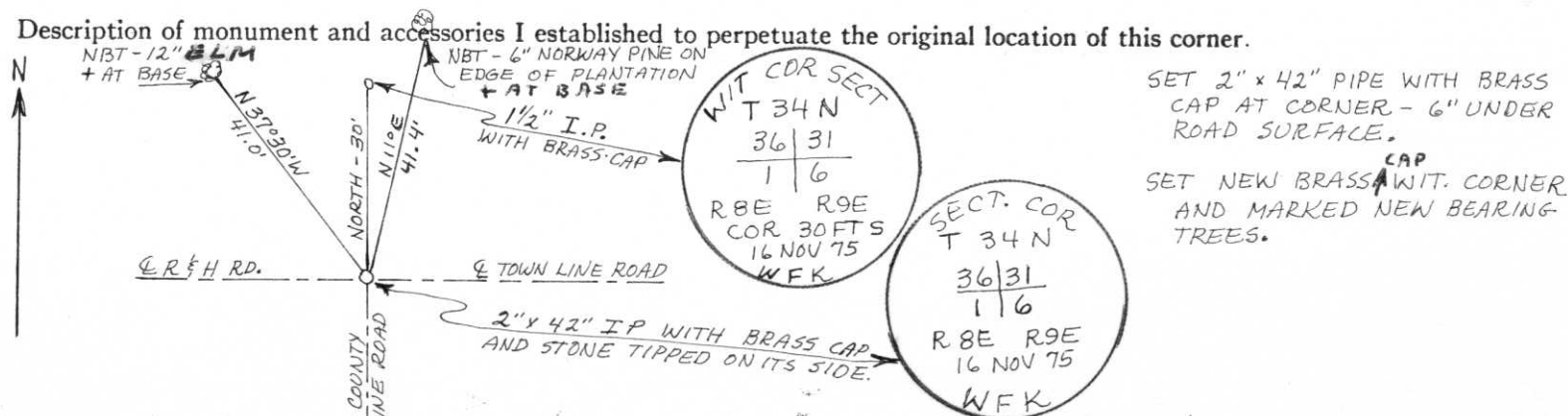
*William F. Kelly*

Description of corner evidence found:

*FOUND WITNESS CORNER THAT HAD BEEN KNOCKED OUT OF POSITION BY A TREE SKIDDER. EXCAVATED ROAD AND LOCATED STONE TIPPED ON ITS SIDE.*



Description of monument and accessories I established to perpetuate the original location of this corner.



Dated at ELCHO, Wis., this 16<sup>TH</sup> day of November, 1975.

Signature William F. Kelly Title Registered Land Surveyor Registration No. 51098  
(County Surveyor, Registered Land Surveyor, or other duly authorized official)

Office of Register of Deeds, County of \_\_\_\_\_, I hereby certify that the within instrument was filed in this office for record on the \_\_\_\_\_ day of \_\_\_\_\_, 19\_\_\_\_ at \_\_\_\_\_ o'clock \_\_\_\_\_ M.

.....  
(Register of Deeds)

By \_\_\_\_\_ Deputy

○ = Corner monument restored.

CERTIFIED LAND CORNER RESTORATION

Index No. Y-25

State of Wisconsin }  
 County of LANGLADE } ss.

History of original corner establishment



I William F. Kelly, do hereby certify that on the 16<sup>th</sup> day of November, 1975, I found evidence of the SECTION corner of Sections 36, 31, 1, & 6 Township 34, North, Range R. 9 E, Fourth Principal Meridian, as described hereon; and that from this evidence I established a new monument and accessories as described hereon to perpetuate the original location of this corner.

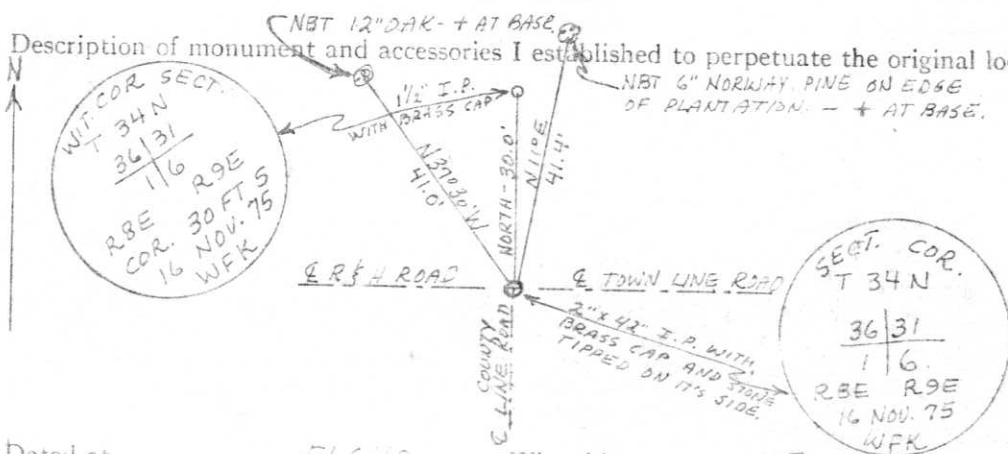
William F. Kelly

Description of corner evidence found:

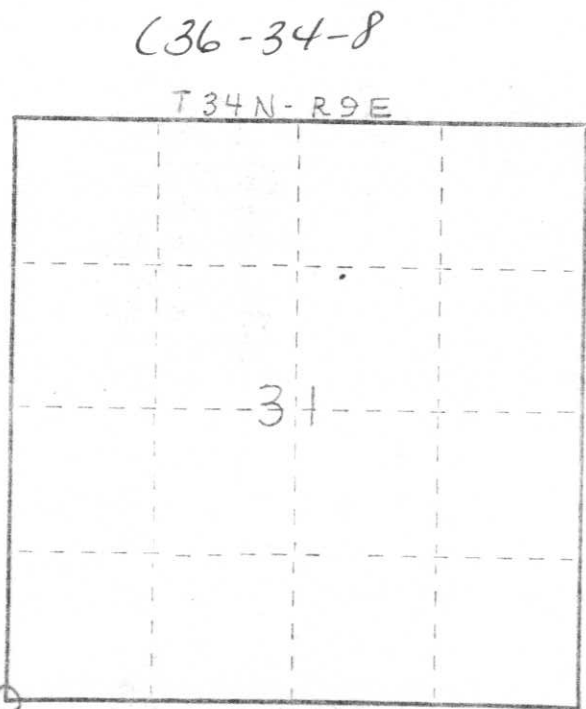
Located wit. corner to a stone in road. Wit. Cor. had been hit by the skidder and knocked out of position. Excavated road and found stone with a triangular corner pointing W. Stone was tipped on its side.

Resident witnesses:

Description of monument and accessories I established to perpetuate the original location of this corner.



SET 2" x 42" PIPE W BRASS CAP MONUMENT AT CORNER - 6" UN ROAD SURFACE.  
 SET NEW WITNESS AND MARKED NEW BEARING TREES.



○ = Corner monument restored.

Dated at ELCHO Wis., this 16<sup>th</sup> day of NOVEMBER 1975

Signature: William F. Kelly Title: REGISTERED LAND SURVEYOR Registration No. 51098  
 (County Surveyor, Registered Land Surveyor, or other duly authorized official)

Office of Register of Deeds, County of \_\_\_\_\_, I hereby certify that the within instrument was filed in this office for record on the \_\_\_\_\_ day of \_\_\_\_\_ 19\_\_\_\_ at \_\_\_\_\_ o'clock \_\_\_\_\_ M.

(Register of Deeds)

By \_\_\_\_\_ Deputy