

# U.S. PUBLIC LAND SURVEY MONUMENT RECORD

NOTE: THIS FORM IS INTENDED AND DESIGNED TO FULFILL ALL REQUIREMENTS OF WISCONSIN ADMINISTRATIVE CODE, CHAPTER A-E 7.08, U.S. PUBLIC LAND SURVEY MONUMENT RECORD (3)(a)(b)(c)(d)(e)(f)(g)(h)(i). ADDITIONAL SHEETS MAY BE NECESSARY TO CONFORM TO SAID REQUIREMENTS.

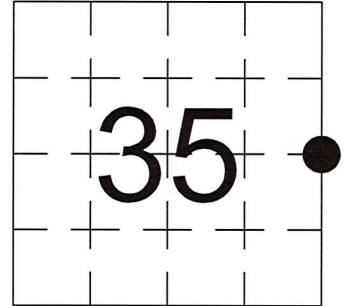
T 34 N, R 8 E

(a) CORNER LOCATION:

EAST 1/4 CORNER, SECTION 35  
 TOWNSHIP 34 NORTH  
 RANGE 8 EAST  
 TOWN OF HARRISON  
 LINCOLN COUNTY  
 WISCONSIN

(b) HISTORY OF ORIGINAL CORNER:

ORIGINAL SURVEYOR: See Previous Tie Sheet  
 COMMENCING DATE:  
 COMPLETION DATE:  
 ORIGINAL BEARING TREES:



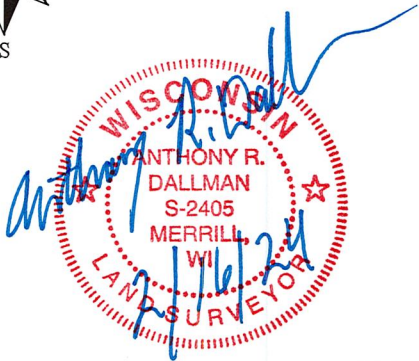
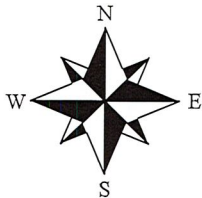
(f)(g)(h) DESCRIPTION OF MONUMENT FOUND AT THIS CORNER AND IF IT WAS ACCEPTED. STATE ALL EVIDENCE (MATERIAL, TESTIMONIAL, OCCUPATIONAL, PLATS, RECORDS, OTHER MONUMENTS) USED AS A BASIS FOR ESTABLISHING LOCATION. IF RE-ESTABLISHING THROUGH LOST CORNER PROPORTIONATE METHODS, INDICATE ALL MONUMENTS, DISTANCES, AND DIRECTIONS USED TO ESTABLISH. INDICATE TYPE OF MONUMENTS FOUND OR SET.

11/15/1974, William F. Kelly found and accepted 6" X 6" Granite Monument.

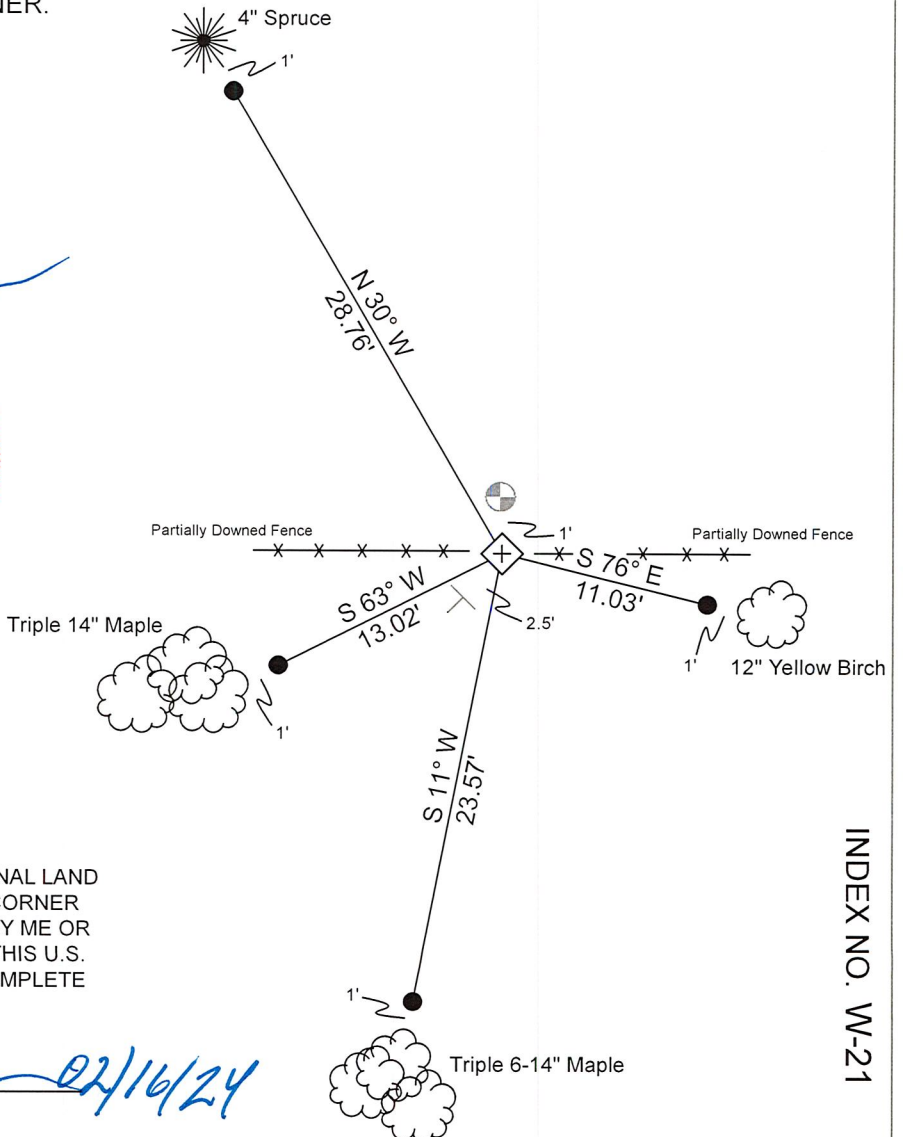
9/29/2023, I, Anthony R. Dallman, PLS-2405, found a 6" X 6" Granite Monument, up 10". I accepted this location and set witness monuments, as shown in the sketch below, to further perpetuate the corner location.

(c)(d)(e) PLAN VIEW OF THE CORNER WITH TIES TO AT LEAST FOUR WITNESSES. IF IN DISAGREEMENT WITH PREVIOUSLY ESTABLISHED CORNER, SHOW THE DISTANCES BETWEEN THE TWO CORNERS AND ALSO THE TIES TO THE DISPUTED CORNER.

- Tie bearings by hand-held compass.
- Tie distances by steel tape.
- Not to scale.



- Berntsen Monument
- Set 3/4" Capped Rebar
- Set Vinyl Post



I, ANTHONY R. DALLMAN, WISCONSIN PROFESSIONAL LAND SURVEYOR, S-2405, HEREBY CERTIFY THAT THE CORNER LOCATION ON THIS RECORD WAS REFERENCED BY ME OR UNDER MY DIRECTION AND CONTROL AND THAT THIS U.S. PUBLIC LAND SURVEY MONUMENT RECORD IS COMPLETE TO THE BEST OF MY KNOWLEDGE AND BELIEF.

*Anthony R. Dallman* 02/16/24  
 ANTHONY R. DALLMAN, PLS S-2405

INDEX NO. W-21

43408352000

43408352000\_Mon-N



43408352000\_North



43408352000\_West



43408352000\_South



43408352000\_East

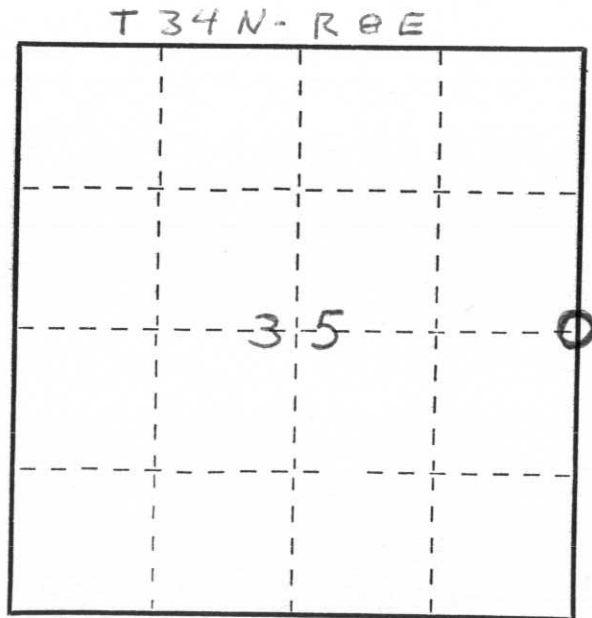


State of Wisconsin }  
County of LINCOLN } ss.

I, William F. Kelly, do hereby certify that on the 15<sup>TH</sup> day of NOVEMBER, 1974, I found evidence of the EAST 1/4 corner of SECT 35 Township 34, North, Range R E, Fourth, Principal Meridian, as described hereon; and that from this evidence I established a new monument and accessories as described hereon to perpetuate the original location of this corner.

Resident witnesses:

RICHARD HANSON



○ = Corner monument restored.

### CERTIFIED LAND CORNER RESTORATION

History of original corner establishment:

GRANITE MONUMENTS IN THIS AREA WERE SET IN THE 1920'S PER AREA RESIDENTS

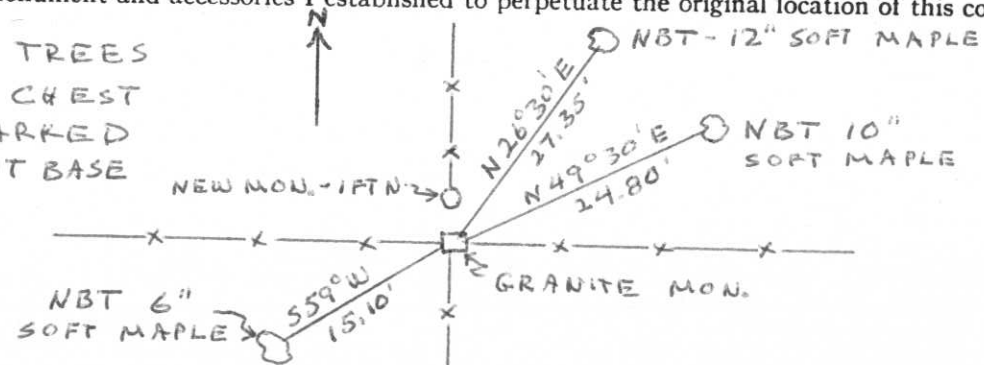
Description of corner evidence found:

I FOUND A 6" x 6" GRANITE MONUMENT MARKED 35 + 36 AT FENCE INTERSECTION. CORNER IS IN A WET AREA.

I SET A NEW COUNTY MONUMENT 1 FT NORTH OF THE CORNER AND PLACED STONES AROUND THE MON.

Description of monument and accessories I established to perpetuate the original location of this corner.

NEW BEARING TREES BLAZED NBT CHEST HIGH AND MARKED WITH A + AT BASE



1/4 SECT COR  
35 + 36  
T 34 N - R 0 E  
COR 1 FT S  
WFK

Dated at ELCHO, Wis., this 15<sup>TH</sup> day of NOVEMBER, 1974

Signature William F. Kelly Title REG. LAND SURVEYOR Registration No. 5-1098  
(County Surveyor, Registered Land Surveyor, or other duly authorized official)

Office of Register of Deeds, County of \_\_\_\_\_, I hereby certify that the within instrument was filed in this office for record on the \_\_\_\_\_ day of \_\_\_\_\_, 19\_\_\_\_ at \_\_\_\_\_ o'clock \_\_\_\_\_ M.

(Register of Deeds)

By \_\_\_\_\_ Deputy

