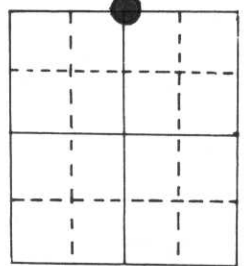


U.S. PUBLIC LAND SURVEY MONUMENT RECORD

Note: This form is intended and designed to fulfill all requirements of Wisconsin Administrative Code, Chapter A-E 5.02, U.S. Public Land Survey Monument Record (3) (a) (b) (c) (d) (e) (f) (g) (h) (i). An additional sheet may be added if necessary to conform with said requirements.

(a) Corner location: Township 33 North
 Range 8 East/West

Town/City/Village Russell
 County Lincoln



Section 2

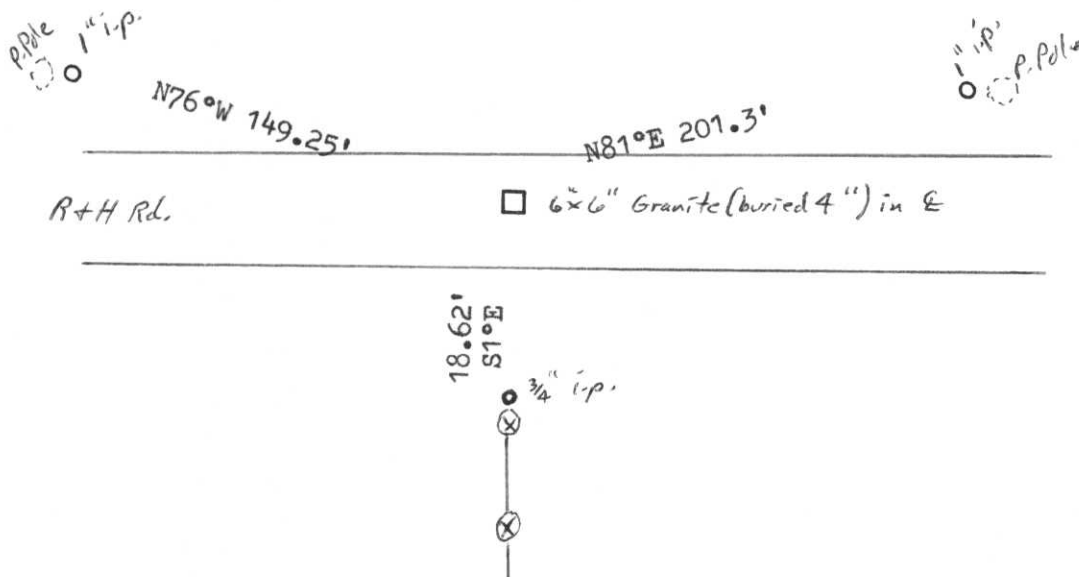
(b) (f) (g) (h) Description of monument found at this corner and if it was accepted, state all evidence (material, testimonial, occupational, plats, records, other monuments) used as a basis for accepting. If not accepted or if nothing was found, state evidence used as basis for establishing location. If reestablished through lost corner proportionate methods, indicate all monuments, distances and directions used to establish.

Original survey in 1850's , BTs BW 15" S7°E 25 lks., Elm 12" S 40°W 39 lks.
 BW 16" N71°W 12 lks., Heml 16" N75°E 52 lks.

IN the 1930's Co. Surveyor Francis Fox set a granite stone here.

In 1988 M. Seymour dug and found the 6 x 6 granite in center of road. It is down about 4".
 Left it in place, made references; 1" i.p. (near P Pole)
 Found 3/4" i.p. south of road at fence line, used it for a reference.

(c) (d) (e) Plan view of corner with ties to at least 4 witness monuments. If in disagreement with previously established corner, show the distances between the two corners and also indicate the ties to the disputed corner.



(i) I, Marvin E. Seymour
 (type or print name) certify that the corner location on this record was determined by me or under my direction and control and that this U.S. Public Land Survey Monument Record is correct and complete to the best of my knowledge and belief.

Marvin E. Seymour Signature Oct. 7, 1988 Date



A-19