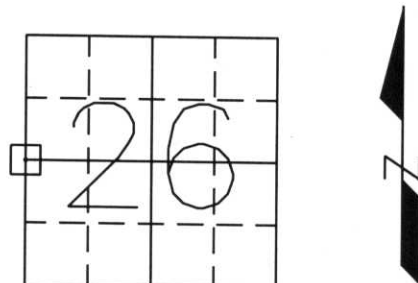


# U.S. PUBLIC LAND SURVEY MONUMENT RECORD

Note: This form is intended and designed to fulfill all requirements of Wisconsin Administrative Code, Chapter A-E 7.08, U.S. Public Land Survey Monument Record (3) (a) (b) (c) (d) (e) (f) (g) (h) (i). An additional sheet may be added if necessary to conform with said requirements.

(a) Corner location: Township 34 North  
 Range 8 East  
 Town/~~City~~/Village HARRISON  
 County Lincoln



(b) (f) (g) (h) Description of monument found at this corner and if it was accepted, state all evidence (material, testimonial, occupational, plats, records, other monuments) used as a basis for accepting. If not accepted or if nothing was found, state evidence used as basis for establishing location. If reestablished through lost corner proportionate methods, indicate all monuments, distances and directions used to establish.

1854 - JACKSON L. PRENTICE SET WOOD POST WITNESSED BY (MAPLE 10 N 47 E 18 LINKS)  
 (BIRCH 24 N 48 W 20 LINKS)

1937 - FRANCIS X. FUCHS SET 1/4 CORNER NOTHING TO WITNESS

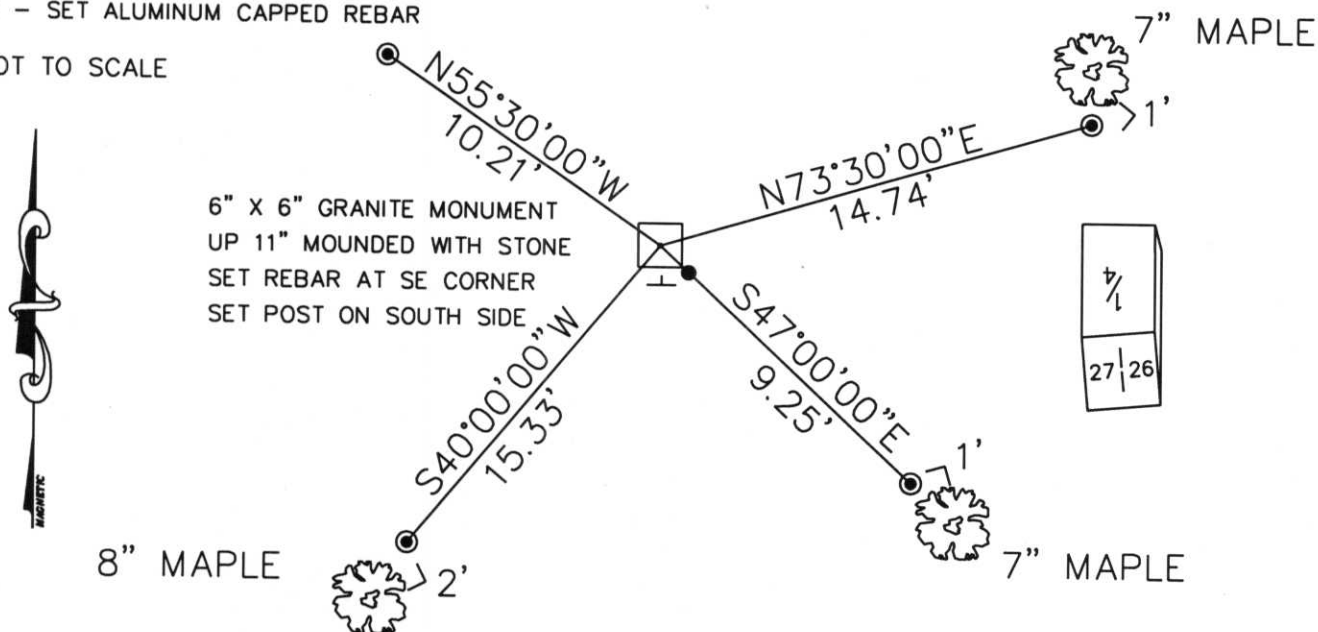
2000 - FOUND 6" X 6" GRANITE MONUMENT MARKED AS SHOWN BELOW.



(c) (d) (e) Plan view of corner with ties to at least 4 witness monuments. If in disagreement with previously established corner, show the distance between the two corners and also indicate the ties to the disputed corner.

● - SET ALUMINUM CAPPED REBAR

NOT TO SCALE



(i) I, Anthony R. Dallman

(type or print name) certify that the corner location on this record was determined by me or under my direction and control and that this U.S. Public Land Survey Monument Record is correct and complete to the best of my knowledge and belief.

Anthony Dallman  
 Signature

10/24/00  
 Date

Index No. 5-17