



CERTIFIED LAND CORNER RESTORATION

Index No. S-21

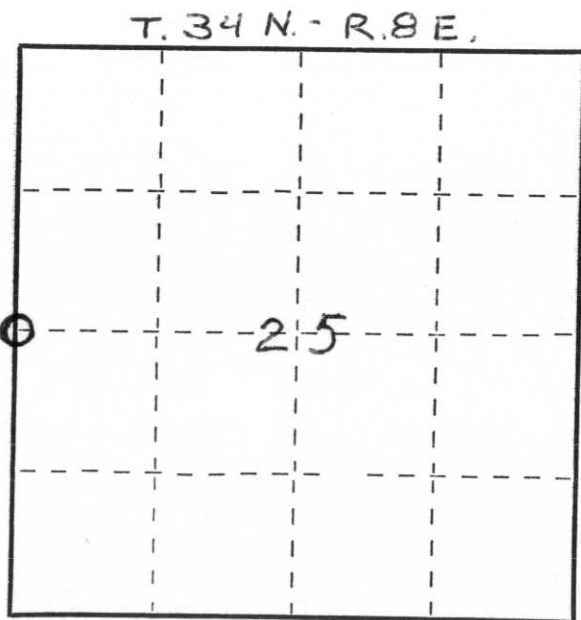
State of Wisconsin }  
County of LINCOLN } ss.

I, William F. Kelly, do hereby certify that on the 6<sup>th</sup> day of NOVEMBER, 1974, I found evidence of the WEST 1/4 corner of SECT 25 Township 34, North, Range 8 E, Fourth, Principal Meridian, as described hereon; and that from this evidence I established a new monument and accessories as described hereon to perpetuate the original location of this corner.

Resident witnesses:

R. E. POND

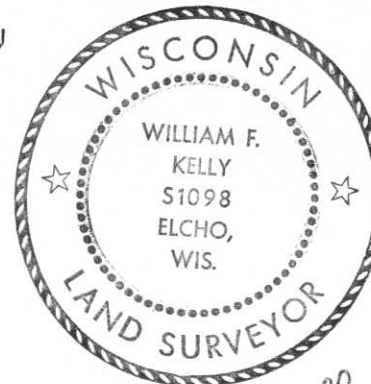
N. Dirckx



○ = Corner monument restored.

History of original corner establishment:

NOTE: GRANITE MON. SET IN THE 1920'S PER AREA RESIDENT



*William F. Kelly*

26+25

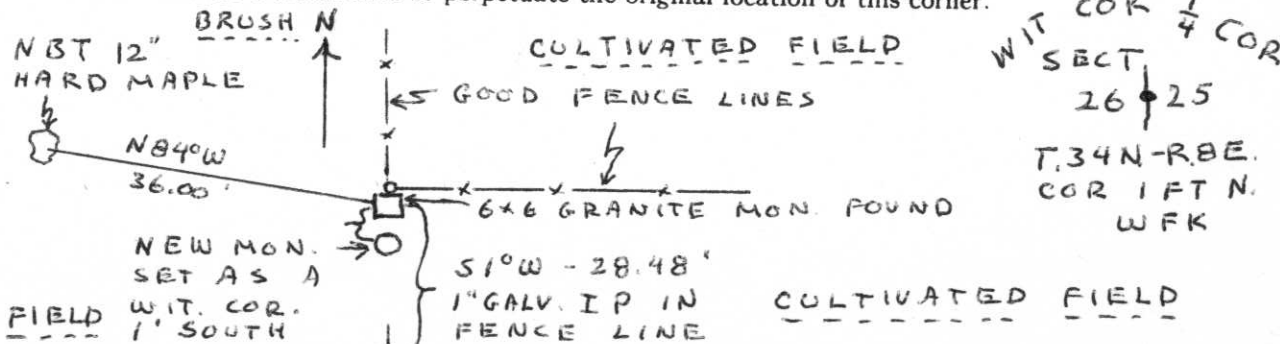
Description of corner evidence found:

I LOCATED A GRANITE STONE MONUMENT SCRIBED MON. IS 6" SQUARE X 30". MON. IS NEXT TO AN OLD POST THAT HAS ROTTED OUT.

THE MONUMENT LOCATED IS IN EXCELLANT CONDITION I SET THE NEW MON. AS A WITNESS CORNER 1 FT. SOUTH OF THE GRANITE STONE. THE NEW MON. IS SET FLUSH WITH THE GROUND. WIT. COR MARKED

Description of monument and accessories I established to perpetuate the original location of this corner.

NOTE: NEW BEARING TREE BLAZED AND SCRIBED NBT CHEST HIGH AND MARKED WITH A + AT BASE



Dated at ELCHO, Wis., this 6<sup>th</sup> day of NOVEMBER, 1974.

Signature William F. Kelly Title REG. LAND SURVEYOR Registration No. S-1098  
(County Surveyor, Registered Land Surveyor, or other duly authorized official)

Office of Register of Deeds, County of \_\_\_\_\_, I hereby certify that the within instrument was filed in this office for record on the \_\_\_\_\_ day of \_\_\_\_\_, 19\_\_\_\_ at \_\_\_\_\_ o'clock \_\_\_\_\_ M.

(Register of Deeds)

By \_\_\_\_\_ Deputy