

U.S. PUBLIC LAND SURVEY MONUMENT RECORD

NOTE: THIS FORM IS INTENDED AND DESIGNED TO FULFILL ALL REQUIREMENTS OF WISCONSIN ADMINISTRATIVE CODE, CHAPTER A-E 7.08, U.S. PUBLIC LAND SURVEY MONUMENT RECORD (3)(a)(b)(c)(d)(e)(f)(g)(h)(i). ADDITIONAL SHEETS MAY BE NECESSARY TO CONFORM TO SAID REQUIREMENTS.

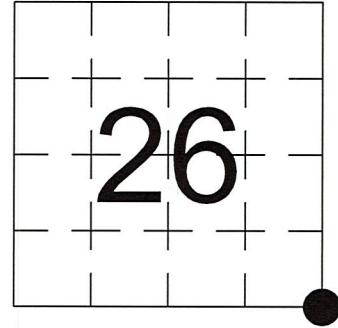
T 34 N, R 8 E

(a) CORNER LOCATION:

SOUTHEAST CORNER, SECTION 26
 TOWNSHIP 34 NORTH
 RANGE 8 EAST
 TOWN OF HARRISON
 LINCOLN COUNTY
 WISCONSIN

(b) HISTORY OF ORIGINAL CORNER:

ORIGINAL SURVEYOR: See Previous Tie Sheet
 COMMENCING DATE:
 COMPLETION DATE:
 ORIGINAL BEARING TREES:



(f)(g)(h) DESCRIPTION OF MONUMENT FOUND AT THIS CORNER AND IF IT WAS ACCEPTED. STATE ALL EVIDENCE (MATERIAL, TESTIMONIAL, OCCUPATIONAL, PLATS, RECORDS, OTHER MONUMENTS) USED AS A BASIS FOR ESTABLISHING LOCATION. IF RE-ESTABLISHING THROUGH LOST CORNER PROPORTIONATE METHODS, INDICATE ALL MONUMENTS, DISTANCES, AND DIRECTIONS USED TO ESTABLISH. INDICATE TYPE OF MONUMENTS FOUND OR SET.

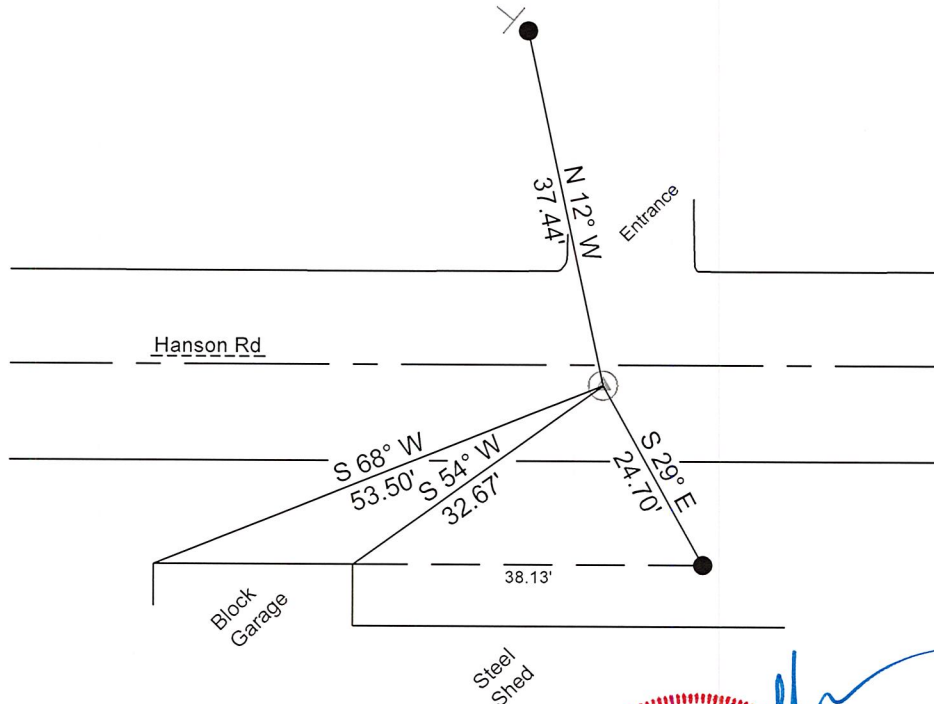
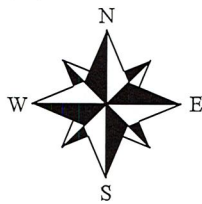
11/26/1974, William F. Kelly set a Berntsen Monument North of centerline of River Rd, NKA Hanson Rd.

10/31/2000, I Anthony R. Dallman, found Kelly's Berntsen +/-3' North of 6' X 6" Granite Monument, down 20", 2.5' South of centerline and set witness monuments.

10/02/2023, I, Anthony R. Dallman, PLS-2405, found 3 witness ties and set a Berntsen SNM - 1 at this location. I accepted this location and set witness monuments, as shown in the sketch below, to further perpetuate the corner location.

(c)(d)(e) PLAN VIEW OF THE CORNER WITH TIES TO AT LEAST FOUR WITNESSES. IF IN DISAGREEMENT WITH PREVIOUSLY ESTABLISHED CORNER, SHOW THE DISTANCES BETWEEN THE TWO CORNERS AND ALSO THE TIES TO THE DISPUTED CORNER.

- Tie bearings by hand-held compass.
- Tie distances by steel tape.
- Not to scale.



- - Found 7/8" Capped Rebar
- ⊥ - Set Vinyl Post

I, ANTHONY R. DALLMAN, WISCONSIN PROFESSIONAL LAND SURVEYOR, S-2405, HEREBY CERTIFY THAT THE CORNER LOCATION ON THIS RECORD WAS REFERENCED BY ME OR UNDER MY DIRECTION AND CONTROL AND THAT THIS U.S. PUBLIC LAND SURVEY MONUMENT RECORD IS COMPLETE TO THE BEST OF MY KNOWLEDGE AND BELIEF.

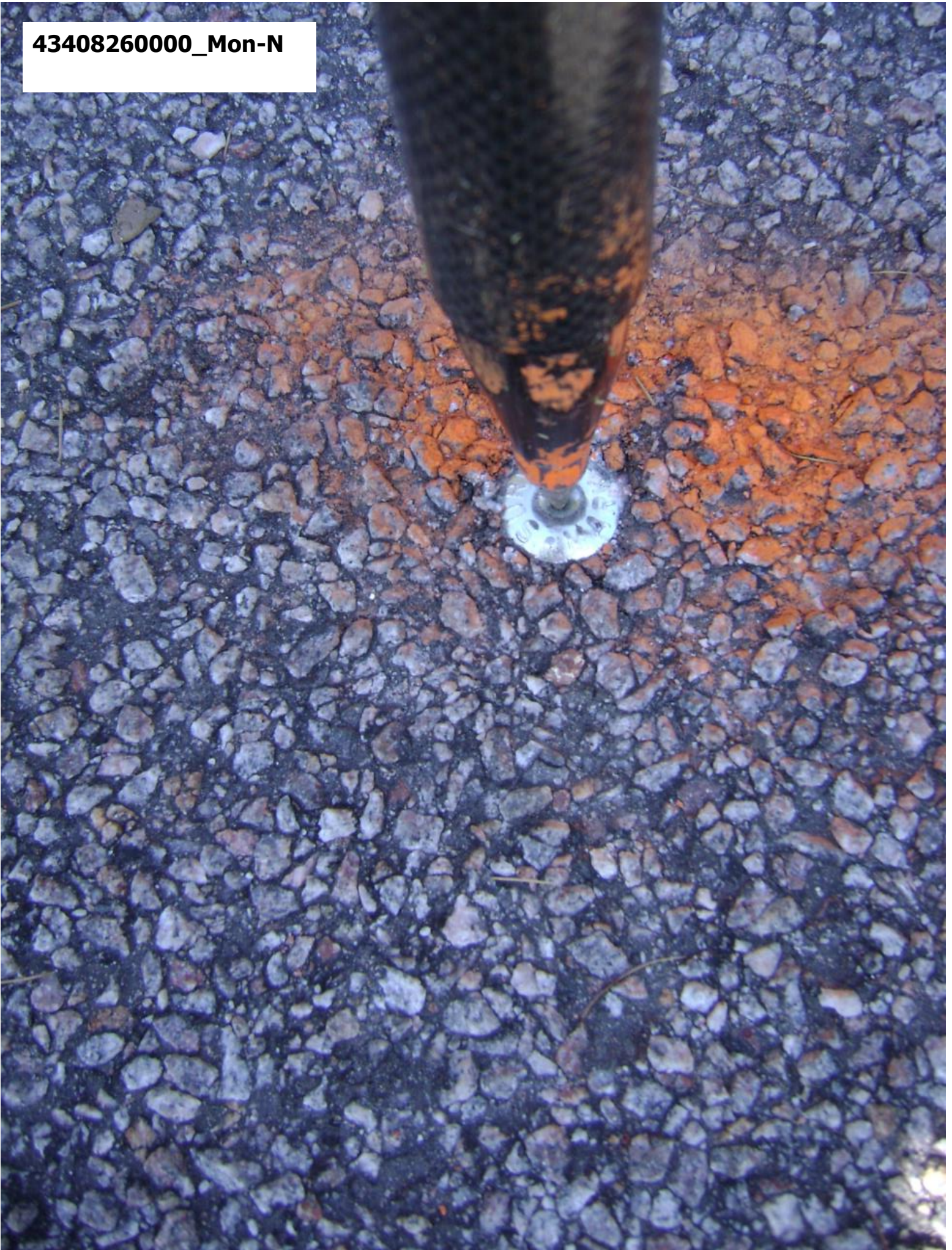
Anthony R. Dallman 02/16/24
 ANTHONY R. DALLMAN, PLS S-2405



INDEX NO. U-21

43408260000

43408260000_Mon-N



4340826000_North



43408260000_West



43408260000_South



43408260000_East



CERTIFIED LAND CORNER RESTORATION

Index No. U-21

State of Wisconsin }
County of LINCOLN } ss.

History of original corner establishment:

I WILLIAM F. KELLY, do hereby certify that on the 26th day of NOVEMBER, 19 74, I found evidence of the SECTION CORNER corner of SECTION 26, 25, 35 & 36 Township 34, North, Range 8 East, Fourth, Principal Meridian, as described hereon; and that from this evidence I established a new monument and accessories as described hereon to perpetuate the original location of this corner.

Description of corner evidence found:

FOUND WITNESS CORNER POST 1 ROD NORTH OF SECTION CORNER.

Resident witnesses:

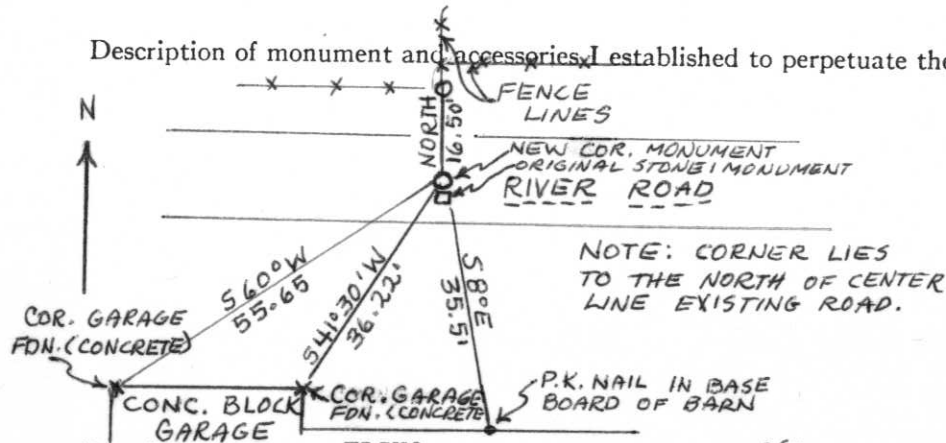
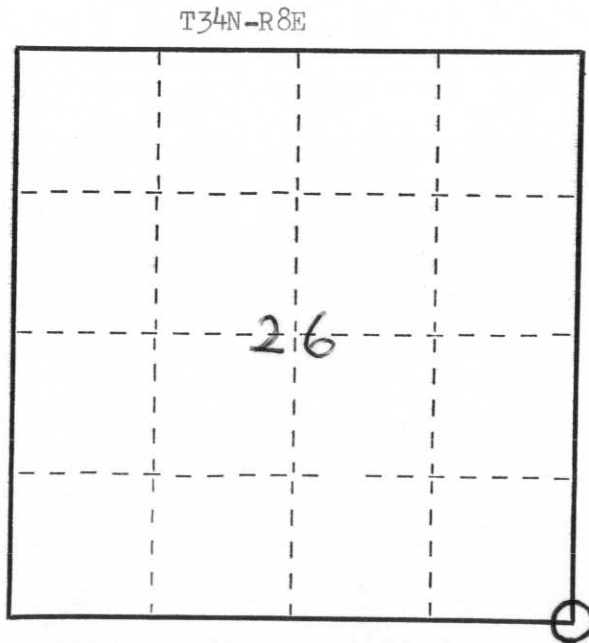
R. Hanson

N. Dirks



William F. Kelly

Description of monument and accessories I established to perpetuate the original location of this corner.



NOTE: CORNER LIES TO THE NORTH OF CENTER LINE EXISTING ROAD.

SET CORNER MONUMENT IN ROAD 6" UNDER SURFACE. ORIGINAL STONE MONUMENT BURIED IN ROADWAY.



Dated at ELCHO, Wis., this 26th day of NOVEMBER, 19 74.

Signature William F. Kelly Title REGISTERED LAND SURVEYOR Registration No. S 1098
(County Surveyor, Registered Land Surveyor, or other duly authorized official)

Office of Register of Deeds, County of _____, I hereby certify that the within instrument was filed in this office for record on the _____ day of _____, 19 _____ at _____ o'clock _____ M.

(Register of Deeds)

By _____ Deputy

○ = Corner monument restored.