

# Attachment to Tie Sheet M,N-19, T34N, R8E

43408233920

I visited the corner on 6/18/2019 to verify the corner and reference tie monumentation. I found the 6" X 6" Granite Monument and all 4 ties from the Dennis Roberts tie sheet (12/03/2002). The established Coordinates and ties agree with existing monument.



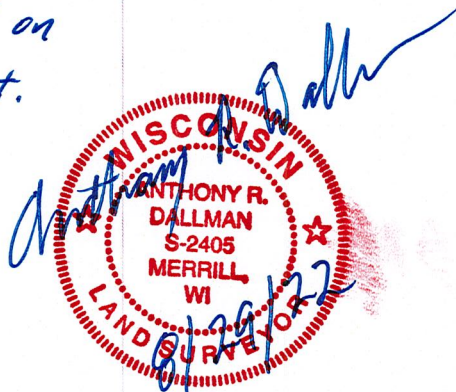
Anthony R. Dallman, PLS-2405

Lincoln County Surveyor



## Correction:

The monument found, was a Berntsen Monument, as stated on the Dennis Roberts tie sheet.



# Attachment to Tie Sheet M,N-19, T34N, R8E

43408233920

I visited the corner on 6/18/2019 to verify the corner and reference tie monumentation. I found the 6" X 6" Granite Monument and all 4 ties from the Dennis Roberts tie sheet (12/03/2002). The established Coordinates and ties agree with existing monument.



Anthony R. Dallman, PLS-2405

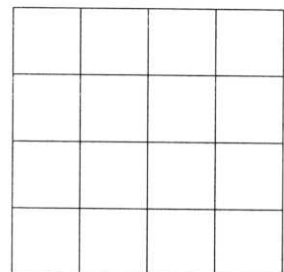
Lincoln County Surveyor



# U.S. PUBLIC LAND SURVEY MONUMENT RECORD

NOTE: This form is intended and designed to fulfill all requirements of Wisconsin Administrative Code, Chapter A-E 7.08 U.S. Public Land Survey Monument Record (3)(a)(b)(c)(d)(e)(f)(g)(h)(i). An additional sheet may be added if necessary to conform with said requirements.

(a) Corner location: Township 34 North  
 Range 08 East  
 Town of HARRISON  
 LINCOLN County, Wisconsin



Witness Corner  
 Section 14

(b)(f)(g)(h) Description of monument found at this corner and if it was accepted, state all evidence (material, testimonial, occupational, plats, records, other monuments) used as a basis for accepting. If not accepted or if nothing was found, state evidence used as basis for establishing location. If reestablished through lost corner proportionate methods, indicate all monuments, distances and directions used to establish. Indicate type of monument found or set and sign post.

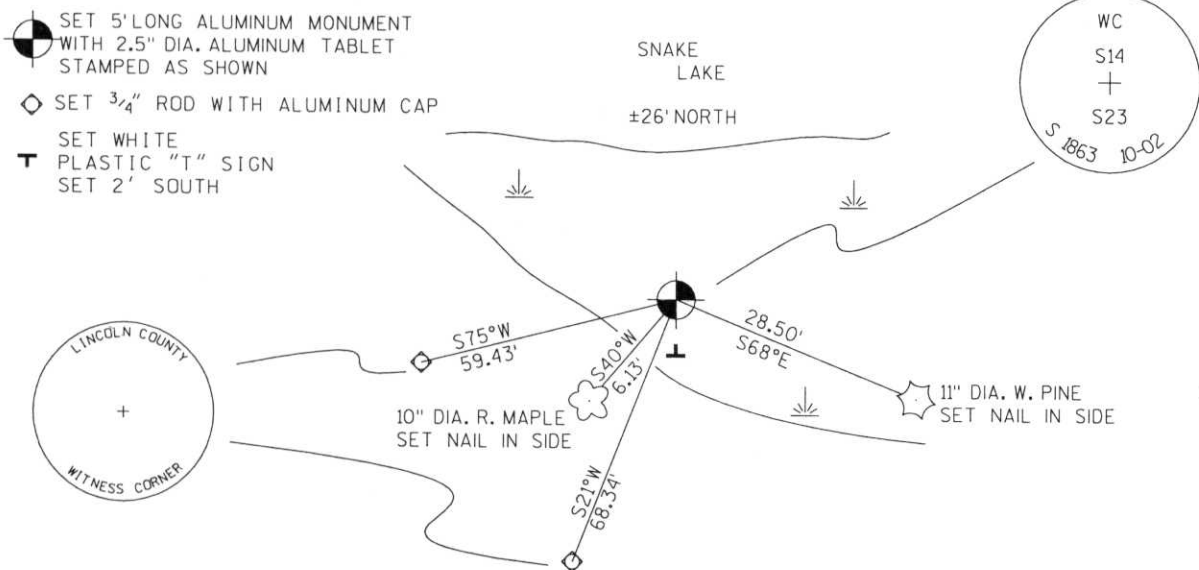
1938 - Frances Fuchs set  $\frac{1}{4}$  W.C. south of point which is in the lake 80'  
 BT: Pine west 5' marked with an "X"

2002 - I found old 6" dia. wood post rotted off 6" above ground, 4"x4" sq. post 0.5' west.  
~~4"x4" square post 0.5' west~~  
 BT: 26" Pine stub west 5'  
 10" R. Maple S40°W 5.5'  
 11" W. Pine S68°E 28.2'  
 Pulled out remains of 6" dia. post (in excellent shape),  
 replaced with 1" dia. 5' long aluminum pipe with 2.5" dia. aluminum tablet,  
 mounded with rocks around monument

stamped and witnessed as shown below

RECEIVED AT LINCOLN COUNTY  
 COURTHOUSE THIS 11<sup>TH</sup> DAY  
 OF December 20 02  
*Tony Walker*  
 LAND INFORMATION OFFICE

(c)(d)(e) Plan view of corner with ties to at least 4 witness monuments. If in disagreement with previously established corner, show the distances between the two corners and also indicate the ties to the disputed corner.



(i) I, Dennis B. Roberts, Registered Land Surveyor \*S-1863, hereby certify that the corner location on this record was determined by me or under my direction and control and that this U.S. Public Land Survey Monument Record is correct and complete to the best of my knowledge and belief.



*Dennis B. Roberts*  
 Signature Date 12-03-02

Index No. MN-19