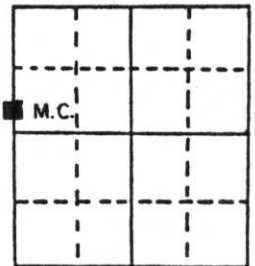


# U.S. PUBLIC LAND SURVEY MONUMENT RECORD

Note: This form is intended and designed to fulfill all requirements of Wisconsin Administrative Code, Chapter A-E 5.02, U.S. Public Land Survey Monument Record (3) (a) (b) (c) (d) (e) (f) (g) (h) (i). An additional sheet may be added if necessary to conform with said requirements.

(a) Corner location: Township 34 North  
 Range 8 East/West  
 Town/City/Village Harrison  
 County Lincoln

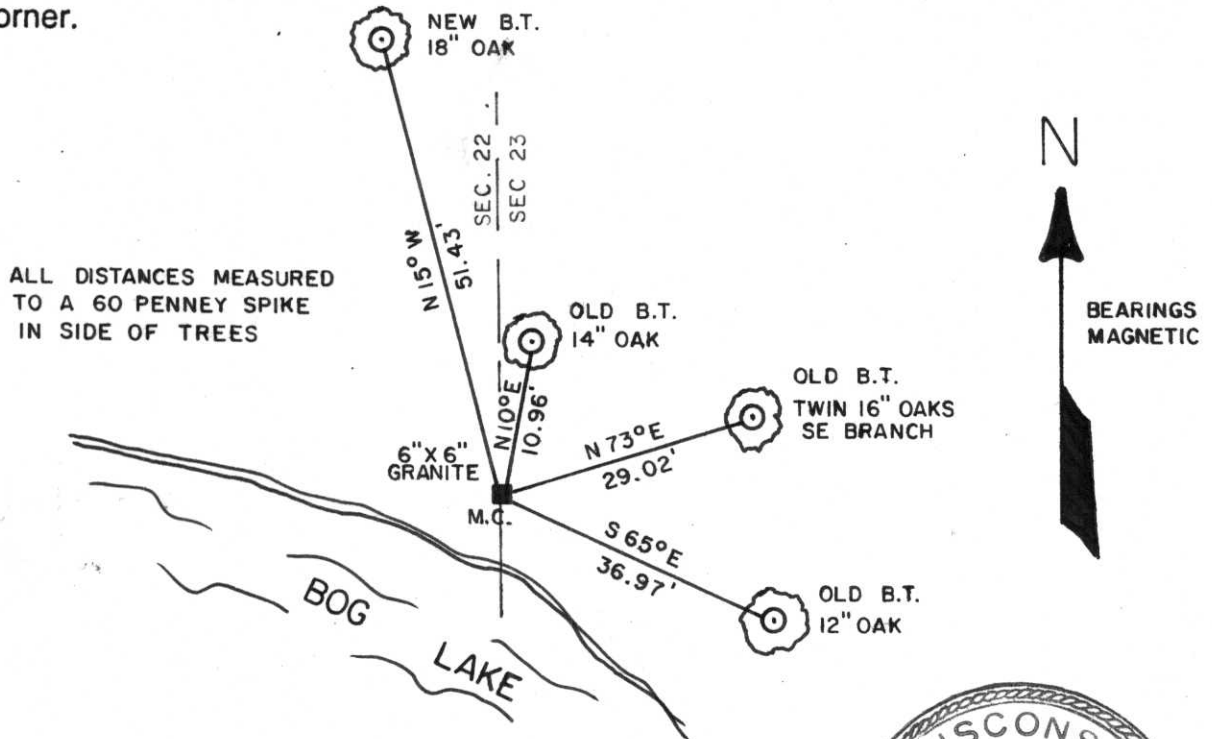


Section 23

(b) (f) (g) (h) Description of monument found at this corner and if it was accepted, state all evidence (material, testimonial, occupational, plats, records, other monuments) used as a basis for accepting. If not accepted or if nothing was found, state evidence used as basis for establishing location. If reestablished through lost corner proportionate methods, indicate all monuments, distances and directions used to establish.

- 1854 Jackson Prentice set original MC. North between 22 and 23 43.57 leave lake.
- 1933-35 Fox set 6" x 6" Granite Monument.
- 1980 William Immich recovered Granite Monument.
- 1988 I found Granite Monument and witnessed as shown below.

(c) (d) (e) Plan view of corner with ties to at least 4 witness monuments. If in disagreement with previously established corner, show the distances between the two corners and also indicate the ties to the disputed corner.



(i) I, William E. Badow  
 (type or print name) certify that the corner location on this record was determined by me or under my direction and control and that this U.S. Public Land Survey Monument Record is correct and complete to the best of my knowledge and belief.

William E. Badow 4-28-88  
 Signature Date



Index No. ND-17

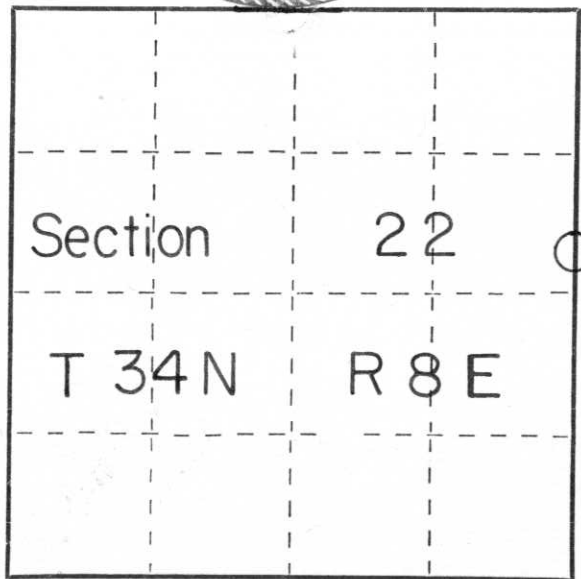
CERTIFIED LAND CORNER RESTORATION

Index No. N, Q-17

State of Wisconsin }  
County of LINCOLN } ss.

I WILLIAM IMMICH, do hereby certify that on the 5th day of DECEMBER, 1984, I found evidence of the MEANDER CORNER corner of SECTION 22 Township 34, North, Range 8 EAST, Fourth, Principal Meridian, as described hereon; and that from this evidence I established a new monument and accessories as described hereon to perpetuate the original location of this corner.

Resident witnesses:



○ = Corner monument restored.

History of original corner establishment:

1854 JACKSON PRENTICE, GOVERNMENT SURVEYOR, RAN NORTH BETWEEN 22+23 40.00 CHAINS SET QUARTER POST IN LAKE, AT 43.57 CHAINS LEAVE LAKE  
1937 F. FOX SET M.L. ON NORTH SIDE SMALL LAKE AT HIGH WATER MARK - NOTHING TO WITNESS - MOUNDED WITH STONE

Description of corner evidence found:

QUARTER POST FALLS IN LAKE, GOVERNMENT DID NOT SET MEANDER CORNER, I FOUND FOXS WITNESS STONE IN PLACE

Description of monument and accessories I established to perpetuate the original location of this corner.

FOUND STONE SET BY F. FOX IN GOOD CONDITION, SET 3/4" IRON PIPE NEXT TO STONE MADE BEARING TREES\*  
RED OAK 12" N 9° E 10.25'  
RED OAK 14" N 73° E 28.00'  
RED OAK 12" S 64° E 35.90'

\* BEARINGS MAG - DISTANCE TO FACE OF BLAZE

Dated at RHINELANDER, Wis., this 6th day of DECEMBER, 1984.

Signature William Immich Title REGISTERED LAND SURVEYOR Registration No. 1383  
(County Surveyor, Registered Land Surveyor, or other duly authorized official)

Office of Register of Deeds, County of \_\_\_\_\_, I hereby certify that the within instrument was filed in this office for record on the \_\_\_\_\_ day of \_\_\_\_\_, 19\_\_\_\_ at \_\_\_\_\_ o'clock \_\_\_\_\_ M.

(Register of Deeds)

By \_\_\_\_\_ Deputy