

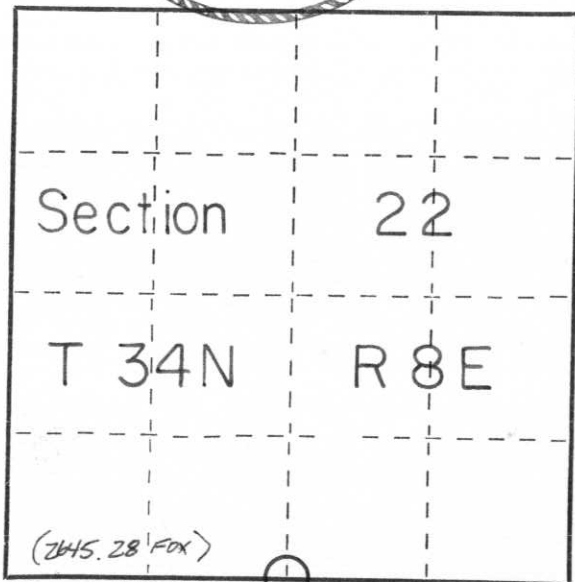
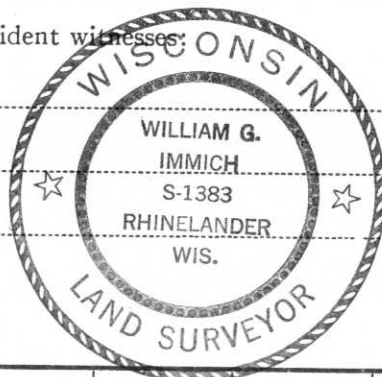
CERTIFIED LAND CORNER RESTORATION

Index No. Q-15

State of Wisconsin }  
County of LINCOLN } ss.

I WILLIAM IMMICH, do hereby certify that on the 5<sup>th</sup> day of DECEMBER, 1984, I found evidence of the SOUTH 1/4 corner of SECTION 22 Township 34, North, Range 8 EAST, Fourth, Principal Meridian, as described hereon; and that from this evidence I established a new monument and accessories as described hereon to perpetuate the original location of this corner.

Resident witnesses:



○ = Corner monument restored.

History of original corner establishment:

1854 JACKSON PRENTICE GOVERNMENT SURVEYOR, WEST CORRECTED BETWEEN 22 - 27 SET QUARTER POST AT 40.12 1/2 CHAINS, MADE B.Ts. BIRCH 8 NZW 13 IK BIRCH 8 S 3 W 11K  
1937 F FOX RAN BETWEEN 22 + 27 SET 1/4 STONE SOUTH 48.7 AT BLAZE LINE, HEMLOCK 11" S 19E 71.5, W PINE 10" N 39W 94.0

Description of corner evidence found:

I FOUND STONE SET BY F. FOX IN PLACE.

Description of monument and accessories I established to perpetuate the original location of this corner.

FOUND STONE SET BY F. FOX IN GOOD CONDITION; SET 3/4" IRON PIPE NEXT TO MONUMENT MADE BEARING TREES\*;  
MAPLE 8" N 55° W 7.30'  
RED OAK 10" S 28° E 12.90'  
RED OAK 9" N 75° E 11.70'

\* BEARINGS MAG - DISTANCE TO FACE OF BLAZE

Dated at RHINELANDER, Wis., this 6<sup>th</sup> day of DECEMBER, 1984.

Signature William Immich Title REGISTERED LAND SURVEYOR Registration No. 1383  
(County Surveyor, Registered Land Surveyor, or other duly authorized official)

Office of Register of Deeds, County of \_\_\_\_\_, I hereby certify that the within instrument was filed in this office for record on the \_\_\_\_\_ day of \_\_\_\_\_, 19\_\_\_\_ at \_\_\_\_\_ o'clock \_\_\_\_\_ M.

(Register of Deeds)

By \_\_\_\_\_ Deputy