

U.S. PUBLIC LAND SURVEY MONUMENT RECORD

NOTE: THIS FORM IS INTENDED AND DESIGNED TO FULFILL ALL REQUIREMENTS OF WISCONSIN ADMINISTRATIVE CODE, CHAPTER A-E 7.08, U.S. PUBLIC LAND SURVEY MONUMENT RECORD (3)(a)(b)(c)(d)(e)(f)(g)(h)(i). ADDITIONAL SHEETS MAY BE NECESSARY TO CONFORM TO SAID REQUIREMENTS.

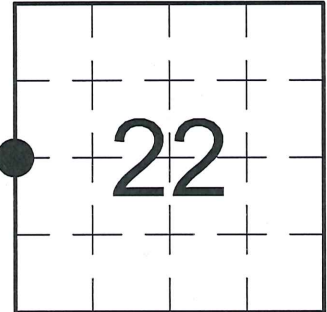
T 34 N, R 8 E

(a) CORNER LOCATION:

WEST QUARTER CORNER, SECTION 22
 TOWNSHIP 34 NORTH
 RANGE 8 EAST
 TOWN OF HARRISON
 LINCOLN COUNTY
 WISCONSIN

(b) HISTORY OF ORIGINAL CORNER:

ORIGINAL SURVEYOR: Jackson L. Prentice, Set post
 COMMENCING DATE: November 27, 1854
 COMPLETION DATE: December 11, 1854
 ORIGINAL BEARING TREES:
 8" Hemlock; N 85° E; 8 links
 10" Birch; S 75° W; 38 links



(f)(g)(h) DESCRIPTION OF MONUMENT FOUND AT THIS CORNER AND IF IT WAS ACCEPTED. STATE ALL EVIDENCE (MATERIAL, TESTIMONIAL, OCCUPATIONAL, PLATS, RECORDS, OTHER MONUMENTS) USED AS A BASIS FOR ESTABLISHING LOCATION. IF RE-ESTABLISHING THROUGH LOST CORNER PROPORTIONATE METHODS, INDICATE ALL MONUMENTS, DISTANCES, AND DIRECTIONS USED TO ESTABLISH. INDICATE TYPE OF MONUMENTS FOUND OR SET.

1938 - F. Fox, RLS-46, found original BT and stake and blazes. Set a 6" x 6" Granite Stone Monument mounded with stones and made BTs.

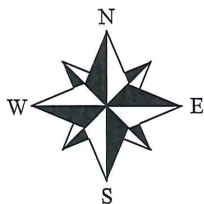
12/05/1984 - W. Immich, PLS-1383, found the Stone Monument in good condition. He set a 3/4" iron pipe next to the Stone and set a green & white post southeast 2.0'. He made reference ties to perpetuate the corner location.

01/14/2015 - I, Anthony R. Dallman, PLS-2405, found the 6" x 6" Granite Stone Monument in good condition in rock mound. Existing BT's gone or grown over. I set new reference ties to further perpetuate the corner location, as shown in the sketch below.

(c)(d)(e) PLAN VIEW OF THE CORNER WITH TIES TO AT LEAST FOUR WITNESSES. IF IN DISAGREEMENT WITH PREVIOUSLY ESTABLISHED CORNER, SHOW THE DISTANCES BETWEEN THE TWO CORNERS AND ALSO THE TIES TO THE DISPUTED CORNER.



- Bearings by hand-held compass.
 - Distances by steel tape.



Found 6" x 6" Granite Stone Monument, up ±2' in rock mound; Vinyl marker post, 2' west; 1" I.P. (up 24"), 1" NW; 6" round wood post (green & white), 2' SE.

Set 7/8" Rebar w/ Aluminum Cap; 18" Oak tree

S 64° W 13.32'

NORTH 36.40'

Set 7/8" Rebar w/ Aluminum Cap; 12" Maple tree

Set 7/8" Rebar w/ Aluminum Cap; 5" Maple tree

driveway

N 67° E 35.19'

Set 7/8" Rebar w/ Aluminum Cap; 9" Maple tree

gravel

I, ANTHONY R. DALLMAN, WISCONSIN PROFESSIONAL LAND SURVEYOR, S-2405, HEREBY CERTIFY THAT THE CORNER LOCATION ON THIS RECORD WAS REFERENCED BY ME OR UNDER MY DIRECTION AND CONTROL AND THAT THIS U.S. PUBLIC LAND SURVEY MONUMENT RECORD IS COMPLETE TO THE BEST OF MY KNOWLEDGE AND BELIEF.

Anthony R. Dallman 9/10/15
 ANTHONY R. DALLMAN, PLS S-2405

INDEX NO. 0-13

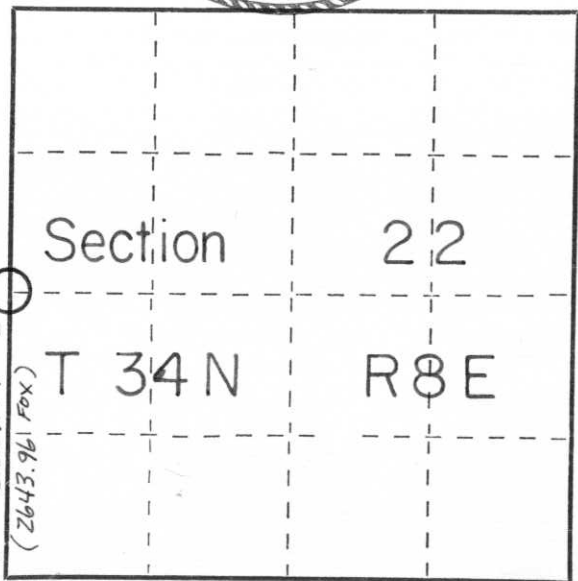
CERTIFIED LAND CORNER RESTORATION

Index No. 0-13

State of Wisconsin }
County of LINCOLN } ss.

I WILLIAM IMMICH, do hereby certify that on the 5th day of DECEMBER, 1984, I found evidence of the WEST 1/4 corner of SECTION 22 Township 34, North, Range 8 EAST, Fourth, Principal Meridian, as described hereon; and that from this evidence I established a new monument and accessories as described hereon to perpetuate the original location of this corner.

Resident witness:



2639.74'
(2643.96' FOX)

○ = Corner monument restored.

History of original corner establishment:

1854 JACKSON PRENTICE, GOVERNMENT SURVEYOR, NORTH BETWEEN 21-22 40.00 CHAINS SET QUARTER POST B.T.S, HEMLOCK 8 N 85 E 81k, BIRCH 10 S 75 W 381k
1937 - F. FOX FOUND VERY OLD STAKE AND ORIGINAL B.T. SET STONE ACCORDINGLY

Description of corner evidence found:

I FOUND F. FOX'S STONE IN PLACE

Description of monument and accessories I established to perpetuate the original location of this corner.

FOUND STONE SET BY F. FOX IN GOOD CONDITION SET 3/4" IRON PIPE NEXT TO STONE, SET GREEN AND WHITE POST SOUTHEAST 2.0', MADE BEARING TREES*

RED OAK	16"	S 61° W	14.90'
RED OAK	12"	N 14° W	18.00'
MAPLE	6"	N 79° E	31.30'

* BEARINGS MAG. - DISTANCE TO FACE OF BLAZE

Dated at RHINELANDER, Wis., this 6th day of DECEMBER, 1984.

Signature William Immich Title Registered Land Surveyor Registration No. 1383
(County Surveyor, Registered Land Surveyor, or other duly authorized official)

Office of Register of Deeds, County of _____, I hereby certify that the within instrument was filed in this office for record on the _____ day of _____, 19____ at _____ o'clock _____ M.

(Register of Deeds)

By _____ Deputy