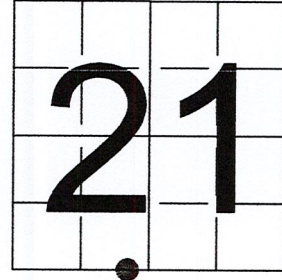


U S PUBLIC LAND SURVEY MONUMENT RECORD

NOTE: This form is intended and designed to fulfill all requirements of Wisconsin Administrative Code, Chapter A-E 7.08 U.S. Public Land Survey Monument Record (3) (a-i)

A-E 7.08(3)(a) Identity of corner:
 MEANDER CORNER SOUTH LINE OF
 SECTION 21, WEST OF LAKE
 TOWNSHIP 34 NORTH,
 RANGE 08 EAST OF THE 4TH PM,
 TOWN OF HARRISON, COUNTY OF LINCOLN

WISCORS - LINCOLN COUNTY
 N: 206,119.490 USft (206,119.682)
 E: 441,820.137 USft (441,820.061)
 Datum: NAD83 (2011)
 GNSS Method RTN - Direct
 GNSS Control WISCORS VRS



The coordinate value shown has been verified by the average of two or more GPS observations at a markedly different time. Coordinates shown in parenthesis are provided by Lincoln County.

A-E 7.08(3)(b)

Original Surveyor: Jackson L. Prentice

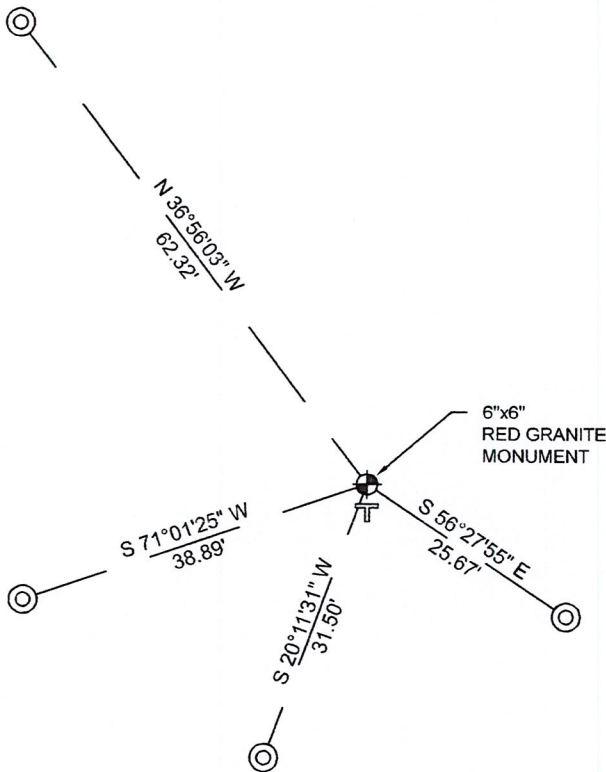
Date of Original Survey	Commenced:	November 27, 1854	Original Accessories:
	Completed:	December 11, 1854	Not Applicable - not an original government survey corner

1937 - Surveyor Francis Fuchs (aka Francis Fox) was known to set granite stone monuments in this area.

March 9, 2007 - Surveyor 2280 - David J. Goslin - indicate this position as "existing 6" x 6" granite monument" on Lincoln County map L437A.

November 29, 2022 - While performing the 2022 Lincoln County PLSS Corner Remonumentation and GPS Services project, I found a 6" x 6" red granite stone near the computed position provided by Lincoln County. I established 4 new reference monuments as shown below.

A-E 7.08(3)(c)(d) Plan view of corner with references to at least 4 witness monuments.



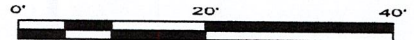
BEARINGS LISTED TO THE NEAREST SECOND ARE REFERENCED TO WISCONSIN COUNTY COORDINATE REFERENCE SYSTEM - LINCOLN COUNTY ZONE. ALL OTHER BEARINGS ARE MAGNETIC



RECEIVED BY LINCOLN COUNTY
 SURVEYOR THIS 27TH DAY
 OF December 20 22
Jeffrey DeMuth
 COUNTY SURVEYOR

LEGEND

- 6" x 6" red granite monument, found
- 7/8" diameter X 30" long - iron rod with 2" diameter aluminum cap, set
- Vinyl T-post, set ±2 feet south of corner



A-E 7.08(3)(e) 1854 Surveyor set a post, 1937 Surveyor set a granite stone monument, 2007 found a granite monument. I found a 6" x 6" red granite stone.

A-E 7.08(3)(f) I accept this monument as a FOUND PERPETUATED LOCATION of the corner.

A-E 7.08(3)(g)(h) This corner was not determined through lost-corner-proportionate methods.

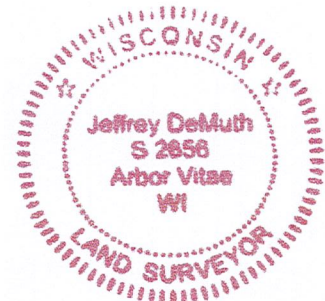
A-E 7.08(3)(i) I, Jeffrey L. DeMuth, Professional Land Surveyor No. S-2656, hereby certify that the corner location on this record was determined by the Lincoln County Surveyor, and the monuments found or set as shown hereon were measured by me or under my direction and control, and that this U.S. Public Land Survey Monument Record is correct and complete to the best of my knowledge, and belief.

Jeffrey L. DeMuth

 SIGNATURE

December 14, 2022

 DATE



0-1011

REPORT

2022-Lincoln County PLSS Corner Remonumentation and GPS Services

Wisconsin Corner Point Identification Number: 43408210021

Surveyor: Jeffrey L. DeMuth – S2656

Corner monument: Found 6" x 6" red granite stone.

Field Book: Cardinal North – Lincoln Co. Remon. – 2022-00

Page: 70

Horizontal Datum: WisCRS – Lincoln County Zone – NAD83(2011)

Date / time of initial measurement:

November 29, 2022 - Start 13:40:33 CST – End 14:03:13 CST

Reference monuments:

4 – Set - 7/8" diameter X 30" long iron rods with 2" diameter Lincoln Co. aluminum cap.

Coordinate Table

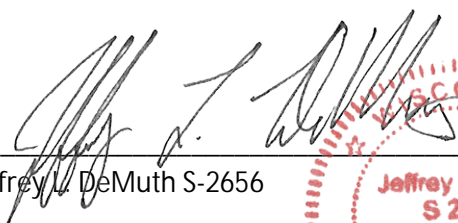
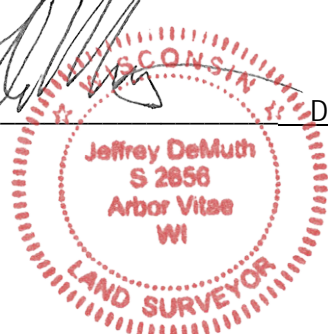
	County Provided	2022 Measurement	Difference
North	206119.682	206119.490	0.19
East	441820.061	441820.137	-0.08

Observed coordinates match with existing coordinates within reason.

Request Data Log for more information.

Additional Notes:

Corner falls ±35 feet west of the current water line of an unnamed lake.


 Jeffrey L. DeMuth S-2656
 
 December 01, 2022
 Date

43408210021_Mon-N



43408210021_North



43408210021_West



43408210021_South

PLEASE DO NOT DISTURB NEARBY SURVEY MARKS



43408210021_East

