

# U.S. PUBLIC LAND SURVEY MONUMENT RECORD

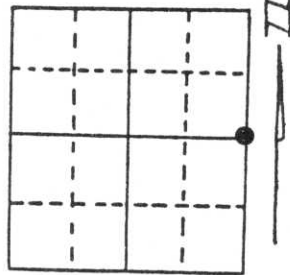
Note: This form is intended and designed to fulfill all requirements of Wisconsin Administrative Code, Chapter A-E 5.02, U.S. Public Land Survey Monument Record (3) (a) (b) (c) (d) (e) (f) (g) (h) (i). An additional sheet may be added if necessary to conform with said requirements.

(a) Corner location: Township 34 North

Range 8 East

Town/Village HARRISON

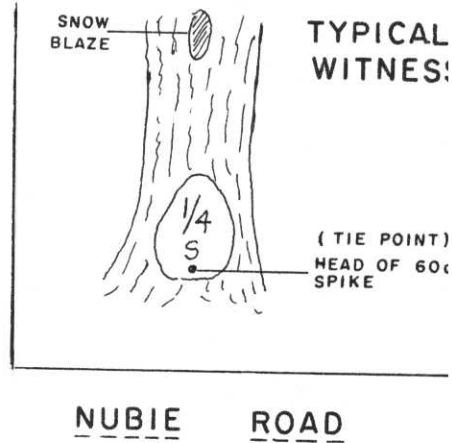
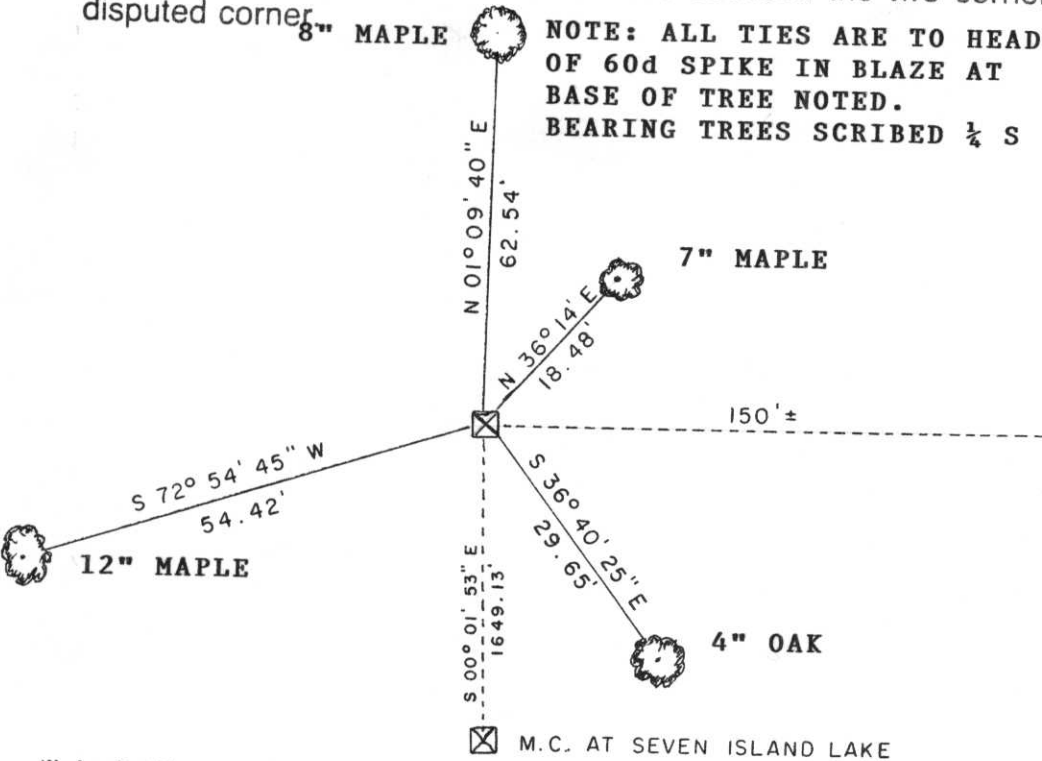
County LINCOLN



Section 15

(b) (f) (g) (h) Description of monument found at this corner and if it was accepted, state all evidence (material, testimonial, occupational, plats, records, other monuments) used as a basis for accepting. If not accepted or if nothing was found, state evidence used as basis for establishing location. If reestablished through lost corner proportionate methods, indicate all monuments, distances and directions used to establish. **Original Corner set by Jackson Prentice in 1854. Surveyed by Francis Fox in 1937, his notes indicate a iron stake and end of fence positioned 40.51 chains South of Northeast corner of said Section 15. Stone Monument recovered in 1969 by William S. Cameron, R.L.S. of Northwoods Surveyors, Inc. pursuant to a plat of survey of Section 15-34-8 on file at the Lincoln County Surveyor's Office. On February 14, 1994 I recovered said Stone Monument upright and intact approximately 150 feet West of Nubie Road. Cornerstone protrudes about 8 inches above ground; is surrounded by a mound of stones and is marked by a 1" iron bar to aid detection.**

(c) (d) (e) Plan view of corner with ties to at least 4 witness monuments. If in disagreement with previously established corner, show the distances between the two corners and also indicate the ties to the disputed corner.



RECEIVED AT LINCOLN COUNTY  
COURTHOUSE THIS DAY  
OF Feb 1994  
Pat Rind  
TAX DESCRIPTION OFFICE



Index No. K-17

(i) I, LaVerne H. Mosher

(type or print name) certify that the corner location on this record was determined by me or under my direction and control and that this U.S. Public Land Survey Monument Record is correct and complete to the best of my knowledge and belief.

LaVerne H. Mosher

Signature

February 25, 1994

Date

