

U.S. PUBLIC LAND SURVEY MONUMENT RECORD

NOTE: THIS FORM IS INTENDED AND DESIGNED TO FULFILL ALL REQUIREMENTS OF WISCONSIN ADMINISTRATIVE CODE, CHAPTER A-E 7.08, U.S. PUBLIC LAND SURVEY MONUMENT RECORD (3)(a)(b)(c)(d)(e)(f)(g)(h)(i). ADDITIONAL SHEETS MAY BE NECESSARY TO CONFORM TO SAID REQUIREMENTS.

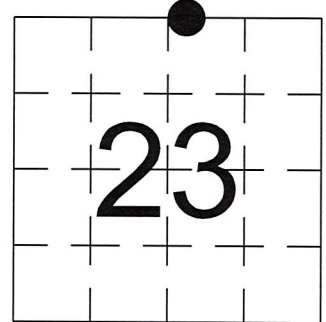
T 34 N, R 8 E

(a) CORNER LOCATION:

MEANDER CORNER, SECTION 23
 TOWNSHIP 34 NORTH
 RANGE 8 EAST
 TOWN OF HARRISON
 LINCOLN COUNTY
 WISCONSIN

(b) HISTORY OF ORIGINAL CORNER:

ORIGINAL SURVEYOR: Francis Fox, Set wood post
 COMMENCING DATE: 1930's
 COMPLETION DATE: 1930's
 ORIGINAL BEARING TREES:



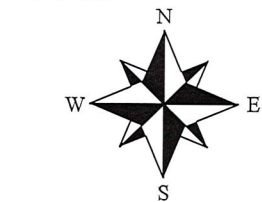
(f)(g)(h) DESCRIPTION OF MONUMENT FOUND AT THIS CORNER AND IF IT WAS ACCEPTED. STATE ALL EVIDENCE (MATERIAL, TESTIMONIAL, OCCUPATIONAL, PLATS, RECORDS, OTHER MONUMENTS) USED AS A BASIS FOR ESTABLISHING LOCATION. IF RE-ESTABLISHING THROUGH LOST CORNER PROPORTIONATE METHODS, INDICATE ALL MONUMENTS, DISTANCES, AND DIRECTIONS USED TO ESTABLISH. INDICATE TYPE OF MONUMENTS FOUND OR SET.

3/12/1980, Genisot & Associates set a Brass Capped Iron Pipe, as shown on Survey Map Drawing Number 7079A, Indexed as M105B in County Surveyor's Office.

6/26/2019, I, Anthony R. Dallman, PLS-2405, found a Brass Capped 2" Iron Pipe and the Oak BT as shown on Genisot's Survey Map. I accepted this location and set reference ties to further perpetuate the corner location as shown in the sketch below.

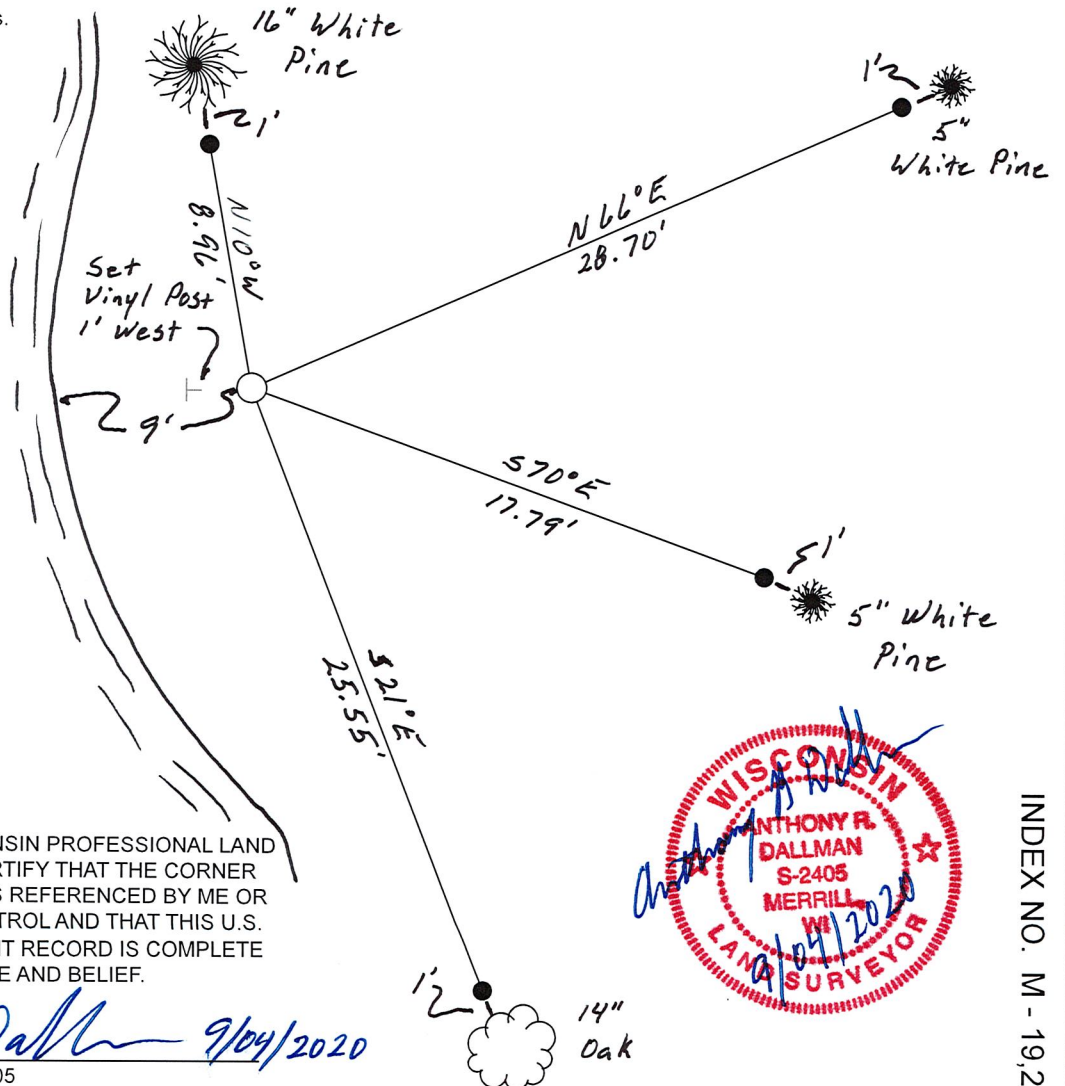
(c)(d)(e) PLAN VIEW OF THE CORNER WITH TIES TO AT LEAST FOUR WITNESSES. IF IN DISAGREEMENT WITH PREVIOUSLY ESTABLISHED CORNER, SHOW THE DISTANCES BETWEEN THE TWO CORNERS AND ALSO THE TIES TO THE DISPUTED CORNER.

- Tie bearings by hand-held compass.
- Tie distances by steel tape.
- Not to scale.



● - Set 7/8" Capped Rebar

SNAKE LAKE



I, ANTHONY R. DALLMAN, WISCONSIN PROFESSIONAL LAND SURVEYOR, S-2405, HEREBY CERTIFY THAT THE CORNER LOCATION ON THIS RECORD WAS REFERENCED BY ME OR UNDER MY DIRECTION AND CONTROL AND THAT THIS U.S. PUBLIC LAND SURVEY MONUMENT RECORD IS COMPLETE TO THE BEST OF MY KNOWLEDGE AND BELIEF.

Anthony R. Dallman 9/04/2020
 ANTHONY R. DALLMAN, PLS S-2405



INDEX NO. M - 19,20